

EA - Anglian FREE BOX 5

# Your Complete Guide to Fishing

in the Anglian Region

in association with



ENVIRONMENT AGENCY

## Rivers & Stillwaters



OVER 300 VENUES

# Buy a rod licence

**R**od licence income funds the Environment Agency's Fisheries service for coarse and trout fisheries, and in part for salmon and sea trout fisheries. The service includes fisheries monitoring, habitat improvement, enforcement, fish rescues, and fish rearing and stocking. Buying a rod licence therefore helps maintain and improve the quality of fisheries available. Quality costs however, and it is crucial for the continuing delivery of our services that income from licences is maintained.

**YOUR ROD LICENCE HELPS US TO PROTECT AND IMPROVE FISHERIES – SO PLEASE REMEMBER TO BUY A LICENCE. ALL INCOME RAISED FROM THE SALE OF ROD LICENCES IS SPENT ON THE PROTECTION AND IMPROVEMENT OF FISHERIES.**

Apart from being illegal, licence dodging means less protection for fisheries and higher costs for legitimate anglers.

◆ Anglers aged 12 years and over who fish for salmon, trout, freshwater fish or eels anywhere in England or Wales must hold an Environment Agency rod licence. Remember that you will also need the permission to fish, if necessary, from the owners or tenants of the fishing rights.

◆ There are different types of rod licence to suit different needs (Salmon & Sea Trout, and Non-Migratory Trout and Coarse Fish), from short-term (1 and 8 day) to full annual licences.

◆ You are eligible for a concessionary licence if you are aged 12 to 16, aged 65 years or over, or receive invalidity benefit or severe disability allowance. You are also eligible if you receive a war pension which includes unemployment supplement.

## HOW TO GET YOUR LICENCE

◆ Rod licences are not difficult to obtain. They are available from all of the 17,000 Post Offices in England and Wales. Remember also that there are some 2,000 outlets which sell rod licences outside normal Post Office hours, including at weekends. To find out where your nearest out-of-hours outlet is, telephone your Environment Agency Regional Office. There are also a number of other outlets (large fisheries etc) which are authorised to sell rod licences.

## LICENCES ARE ALSO AVAILABLE BY POST FROM:

**Environment Agency Rod Licence Administration Centre  
PO Box 432  
Richard Fairclough House  
Knutsford Road  
Warrington  
Cheshire  
WA4 1HH**

◆ Failure to produce a valid Agency rod licence when fishing is a criminal offence, and it is the Agency's policy to prosecute offenders. The maximum fine is £2,500. With increased attention being paid to licence evasion, and with more bailiffing effort being made, the chances of getting caught if you fish without a licence are ever increasing.

## WELCOME

# Fishing in the Anglian Region

**W**elcome to the second edition of our Guide to Fishing in the Anglian Region, published under the new Environment Agency banner. The Agency has inherited all the fisheries duties and responsibilities from the previous National Rivers Authority, and we remain as committed as ever to protecting the water environment and ensuring that quality fisheries and fishing are available to all anglers. Reaching from the Humber Estuary in the North to the Thames Estuary in the South, Anglian region is geographically the largest of the eight Agency regions.

Anglian region continues to maintain its reputation as having some of the finest coarse fishing to be found anywhere in the country, as well as some of the most famous reservoir trout fisheries. The region contains around 3,000 miles of river and drain fishing, plus many hundreds of stillwaters.

With all of the region's rivers classified as lowland fisheries, roach, bream and pike are the dominant species in most of our rivers, although chub, dace and barbel become important in the upper reaches of the major rivers. Many of the chalk fed rivers feeding into Breckland, the Great Ouse and some Lincolnshire and Norfolk rivers, support natural brown trout populations.

Anglian not only has variety and quantity of fish, but also quality. Specimen fish caught in the region which hold or have held British rod caught records include Dace, Rudd and Zander, and numerous specimen pike. So, whatever your choice of fishing: specimen, match, or just a leisurely day out, Anglian region can meet your needs.

The annual Agency budget for fisheries in the Region is around £2million, all of which is spent on the management and protection of fisheries. This money funds a range of activities including fishery surveys, habitat improvement, fish rescues, restocking, fisheries advice, and enforcement. This underlines the importance of money from rod licences and your continuing support in holding a valid licence.

There are a total of 41 staff involved in fisheries management across the region, plus some 90 people involved in enforcement. Fisheries enforcement staff are a mixture of full-time, part-time and honorary bailiffs who between them check thousands of rod licences each year.

This Guide is designed to introduce new and existing anglers to the wide range of fishing available in the Anglian Region and we have tried to make it as comprehensive as possible. However, as angling clubs change and new venues



*The Anglian region has a fantastic variety of fish on offer.*



ENVIRONMENT AGENCY



## About the Environment Agency

The Environment Agency exists to provide quality environmental protection and improvement through the regulation of land, air and water. The Agency was formed in April 1996, taking over the functions of its predecessors the National Rivers Authority, Her Majesty's Inspectorate of Pollution, the Waste Regulation Authorities, and several smaller units from the Department of the Environment.

The Agency has statutory responsibilities for:

- ♦ **Pollution Prevention and Control** – regulating discharges to air, land and water to minimise the discharge of polluting substances into the environment.
- ♦ **Water Resources** – monitoring resources and licensing abstraction to balance the water needs of abstractors with those of the environment.
- ♦ **Flood Defence** – general supervision over all matters relating to flood defence, including the issuing of flood warnings.
- ♦ **Conservation** – promoting the conservation and enhancement of natural beauty, flora and fauna and geological features of special interest.
- ♦ **Fisheries** – maintaining, improving and developing fisheries in inland waters, through a wide ranging programme of fisheries services.
- ♦ **Navigation and Recreation** – responsibilities for navigation, and for the provision and maintenance of recreational facilities on rivers and waters under its control.



John Adams

in the following pages for each Area in the Anglian Region should be seen more properly as an indication of the wide variety of angling opportunities available.

If you would like to know more about fisheries activities in your local area, please contact your local Fisheries and Recreation Officer, who will be happy to help. The contacts are shown in the panel on the right.

Tight lines!

**John Adams**  
Regional Fisheries, Recreation, Conservation and Navigation Manager

open up, it is not possible to include every individual club or current venue. Therefore the lists of clubs/locations given

### Ancholme, Witham area:

Nick Bromidge at Manby  
Tel: 01507 328102

### Welland and Nene area:

Chris Reeds at Spalding  
Tel: 01775 762123

### Great Ouse and Middle Level:

Roger Handford and Paul Wilkanowski at Bampton  
Tel: 01480 414581

### Broadland, Essex and Suffolk Rivers:

Robin Burrough at Ipswich  
Tel: 01473 727712

## BYELAWS

NATIONAL byelaws affect open and close seasons for fishing, permitted methods and baits, the numbers of rods in use, the number of fish taken, the use of keepnets, and many other aspects of fishing.

Byelaws are designed to protect fish stocks according to local circumstances. The Agency has inherited byelaws from previous authorities, so it is important to be aware that there are significant regional and/or local variations.

The Agency regularly reviews byelaws, and if you are in any doubt about those which apply in any region, you can obtain a copy free of charge from your local Agency office. Your local Enforcement Officer (listed below) will also be happy to help if you are in any doubt about byelaws.

Northern Area	Roger Ferguson	01522 513100
Central Area	Alan Wilson	01480 414581
Eastern Area	Chris Window	01473 727712

The Environment Agency Anglian Region Headquarters is based at Peterborough. The address is:

**Kingfisher House**  
Goldhay Way  
Orton Goldhay  
Peterborough PE2 5ZR  
Tel: 01733 371811

# Welcome to the Northern Area

**Y**ou're about to enter one of the most fish-filled areas of the country! The Anglian region is packed with lakes, drains, rivers and ponds, and the Northern Area is prolific, to say the least.

This area has always been a magnet for anglers, as the Lincolnshire stillwaters had the chance to stay open all year. This is now a countrywide trend, with the changed statutory close season arrangements, but

that does not stop thousands of anglers visiting this rich area of mixed fishing. When June 16 arrives, things get even better as famous rivers like the Welland and Witham, renowned for their bream shoals, and the Nene, famous for its roach, become available.

Along the East coast, numerous smaller rivers flow. Their character

depends on local geography, but angling opportunities are diverse, and range from upper river section chalk stream trout fishing to the lowland drain coarse fishery.

Match fishing is also big business on Northern Area waters, with many clubs and associations regularly staging competitive events on a whole host of fisheries. National competitions often come to the Area, with the NFA nationals a regular visitor, as

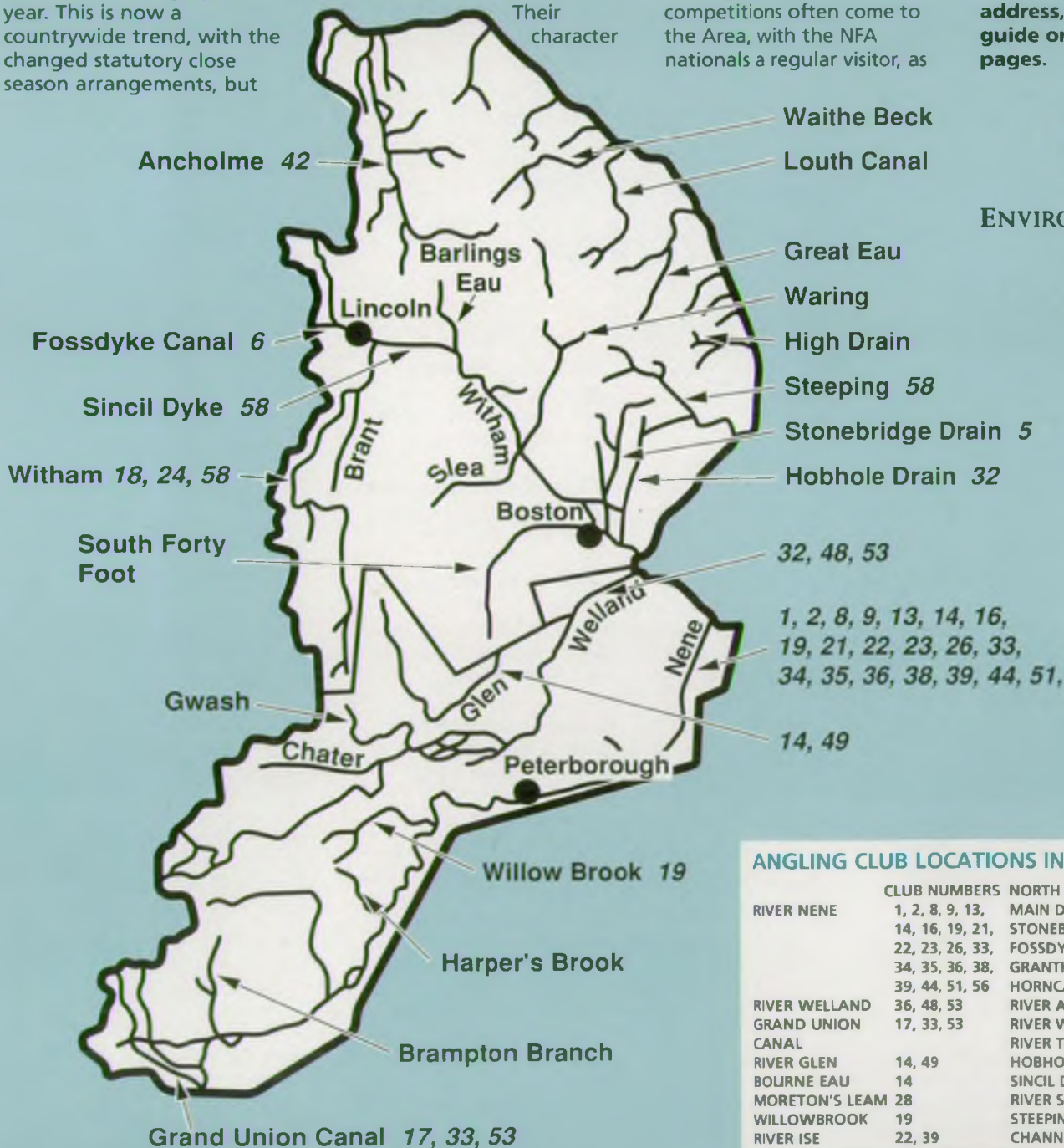
are various qualifiers.

So whether it is pleasure or match angling, river or stillwater (there are literally hundreds of venues), you name a species and there is a water in the Northern area where you can catch it.

**Locations of Northern Area Angling Clubs - for a key to club location and address, see the numbered guide on the following pages.**



ENVIRONMENT AGENCY



## ANGLING CLUB LOCATIONS IN NORTHERN AREA

	CLUB NUMBERS	NORTH LEVEL	
RIVER NENE	1, 2, 8, 9, 13,	MAIN DRAIN	52
	14, 16, 19, 21,	STONEBRIDGE DRAIN	5
	22, 23, 26, 33,	FOSSDYKE CANAL	6
	34, 35, 36, 38,	GRANTHAM CANAL	18
	39, 44, 51, 56	HORNCASTLE CANAL	20, 58
	36, 48, 53	RIVER ANCHOLME	42
RIVER WELLAND	17, 33, 53	RIVER WITHAM	18, 24, 58
		RIVER TILL	24
RIVER GLEN	14, 49	HOBHOLE DRAIN	32
BOURNE EAU	14	SINCIL DYKE	58
MORETON'S LEAM	28	RIVER STEEPING/ CHANNEL	58
WILLOWBROOK	19		
RIVER ISE	22, 39		

## Northern Area – Rivers

### RIVER WITHAM

As a fishery, the Witham demonstrates some of the region's finest coarse fishing. The large lowland section running from Lincoln to Boston is dominated by roach and bream, and regularly hosts major matches. Winter hotspot areas include the Kirkstead and Tattershall Bridge sections. Upstream of Lincoln towards Grantham chub, barbel and dace occur in sections with greater flow and suitable habitat features. The headwaters of the Witham at Grantham contain native brown trout and grayling.

### RIVER ANCHOLME

The Ancholme is a very popular coarse fishery, again dominated by roach and bream, although numbers of other species, notably perch, have undergone recent improvement and regularly contribute to anglers catches. Improvement work



*The River Witham – a fantastic summer venue.*

recently completed includes new fishing pegs at Scabcroft, Broughton and Brigg. For winter sport, the section through Brigg is very popular; at other

times of year choice sections include Broughton, Horkstow and Snitterby.

### FOSSDYKE CANAL

Originally dug by the Romans, the Fossdyke retains its original narrow canal design. Excellent coarse fish stocks are supported by this fishery, typical lowland species of roach and bream dominating. The Fossdyke joins the River Witham at Lincoln, forming the Brayford Pool.

### SOUTH FORTY FOOT DRAIN

This large lowland drain takes water from surrounding low lying land, eventually discharging to the sea at Boston. Roach, bream, pike, tench and perch typically provide opportunities to experience large river sport. There is good access to many sections of the drain, with public footpath running along riverbank. A fish refuge has recently been constructed at Hubberts Bridge, providing deep dark water to help protect fish stocks during periods of high flow.

### BOSTON DRAINS

These drains include the West Fen Drain system, Stonebridge Drain, Hobhole and the East and West Fen Catchwater Drains. All contain good stocks of coarse fish, including specimen size bream. On the

Stonebridge Drain a special four peg disabled angler facility allows wheelchair access to the waterside.

### RIVER WELLAND

The Welland runs from Market Harborough via Stamford and Spalding to The Wash. The fishing can be roughly divided into two areas and types. Upstream of Market Deeping the river is renowned for large Winter catches of chub and roach.

Winter matches held around Stamford have been known to produce winning catches upwards of 40 lb. During the warmer months the river is fished more by individuals, who can catch large chub from the weedy pools. Downstream of Market Deeping, the river is much wider with regular banks and excellent access. The river is slow flowing with populations of bream and roach, plus tench and eels. The bream can reach double figures, but are often reluctant to feed in daylight. It is also a popular match and pike venue. Through Spalding town the fishing on the Welland itself is free, although the Coronation Channel is a club water.

### RIVER GLEN

Although it suffered badly from the effects of drought during 1990 and 1991, the lower end of the River Glen and the Bourne Eau can still produce good



*A typical haul of Witham bream.*

# EYEBROOK RESERVOIR

## **400 Acre Trout Fishery**

In delightful surroundings on the Leicestershire, Rutland and Northamptonshire borders. Off the A6003 between Uppingham and Corby (Follow the AA signs)

Excellent value -

Day Ticket - £11.50 (8 Fish)

Superb Bank and boat fishing  
Boats for hire - £11.00 per day

No yachts or sails etc..

TELEPHONE FISHING LODGE:

**01536 770264**



## **WHEATER - FIELDSPORTS**

- Rifles ● Guns ● Ammunition
- Fishing Tackle ● Clothing

INCORPORATING WHEATER  
PHOTO CENTRE

30-9 Tentercroft Street,  
Lincoln LN5 7DB

Telephone: LINCOLN  
(01522) 521219

*Lincolnshire's Premier Dealer*

CARP - COARSE and  
GAME FISHING

Mail order our speciality

For best prices and 1997 catalogue  
now available

RING FREEPHONE 0500 118023

*Credit terms on request*



## **OPPORTUNITIES IN ANGLING**

Train at home for new and rewarding careers in Angling Instruction and Fishery Management.

*Telephone ACT for your  
free information pack:*

**01923 840007**



## **GRAFHAM WATER**

Grafham Water Fishing Lodge  
West Perry, Huntingdon  
Cambs PE18 0BX

Tel: 01480 810531 Fax: 01480 812488

- 1500 acres.
- Excellent Trout Fishing, Bank & Boat.
- Home of the countries largest on grown Brown & Rainbow Trout.
- Large Tackle Shop inc. Fly Tying Section.
- On site Beginners Course - April - Sept  
Tickets from £4 -£14 Boats available



## **PITSFORD & RAVENSTHORPE RESERVOIRS**

PITSFORD FISHING LODGE  
BRIXWORTH ROAD, WALCOT  
NORTHAMPTON NN6 9SJ

TEL: 01604 781350

FAX: 01604 781552

## **PITSFORD RESERVOIR**

750 acres of superb Trout Fishing.  
Extensive Tackle Shop & Fly Tying Section.

Price from £4 - £14,

Boats available.

Beginners Courses -

Fortnightly April - Sept.

## **RAVENSTHORPE RESERVOIR**

100 acres, Oldest Stillwater Trout Fishery  
in the country.

Over 100 years old.

Prices from £4 - £14. Boats available.

PLUS Float Tubes to hire.



*The River Nene is extremely popular amongst anglers of all standards.*

catches, particularly of roach during Winter when the weed has died down. Pike fishing is also good with plenty of fish to be had on deadbaits or lures.

**THE FENLAND DRAINS**

The drains of South Lines and North Cambs provide a wide variety of fishing all year round. On the drains around Spalding, good roach and tench fishing is

available during the Summer, with pike well into double figures caught when the cold weather arrives. The South Holland system is known for bream catches into three figures during matches and although there are problems with the salinity at the lower end, the middle reaches produce excellent bags of roach and bream to those who can master the technique of fishing a fairly

large narrow drain.

The North Level system is also a good match venue and has excellent pike fishing with fish to over 30 lb a real possibility.

**RIVER NENE**

With its source West of Northampton, the Nene runs North East past Oundle towards Peterborough. The locks along the river mean that Summer flows are sluggish and this particularly suits the roach and bream populations that flourish throughout the system.

Upstream of Northampton, where fishing is set on a much more informal basis, and downstream of the numerous weir pools, chub and dace are frequently caught.

With the re-introduction of barbel to certain reaches they are sure to make an impact in the coming years. Big catches of roach are made on seed baits during Summer on the Oundle to Orton stretches of the river. During the Winter the lower Nene fishes best as the levels drop after rain.

Local tackle dealers and the angling press provide an invaluable source of information on which stretches are fishing well and where matches are booked.

**RIVER TIPS**



■ (Left): Pole anglers fishing on flowing water should choose a 'body-up' pole float as this allows you to hold the float back against the flow and slow the bait down.

■ If fish are not snapping up the bait confidently when stick float fishing, try alternating the shotted pattern, depth and feeding pattern until you hit the magic formula.

■ If you are getting bites on-the-drop when feeder fishing and not seeing them, a rig

called a 'dink-dink' is worth trying. Here the hooklength is shortened to just a couple of inches and any fish grabbing the bait on the way down will be hooked against the weight of the feeder as it falls through the water.

■ Dace can easily be persuaded to feed in the upper levels of the water so use an on-the-drop stick or waggler rig with the shot evenly strung out.

**MILL ROAD FISHING LAKES**

Addlethorpe  
Nr Skegness

**COARSE FISHING**

Touring site with Snack Bar & Electric Hook-ups

TELEPHONE:

**01754 767586**

**PINGLE BRIDGE HOLIDAY CARAVANS**

2 min walk from middle level main drain

**73 Harecroft Road, Wisbech, Cambs.**

**Telephone**

**01945 474848**

**I. & S. FISHING TACKLE SUPPLIES**

*"Come to the Experts Whose Business is their hobby"*

The largest Fishing Tackle Shop in Norwich, stocking a vast range of leading brand names for the fishing enthusiast - at the most competitive prices.

Top quality baits all year round. Exclusive bait additive proven by local experts from Holland, Germany, Denmark & Sweden.

I&S have their own range of platform barrows. Seat boxes and accessories.

Open 6am -6pm Mon-Sat

Late opening Fri 8pm. Sunday 9am-4pm

UNIT 6, DRAYTON PARK INDUSTRIAL ESTATE, TAVERHAM ROAD, DRAYTON, NORWICH

Tel: (01603) 261826 Fax: (01603) 261826

*Service with a Smile*

**SAPPHIRE LAKES**

NORWELL LANE, CROMWELL, NEWARK  
**3 LAKE COMPLEX  
2 COARSE LAKES**

£4 a day, £5 a night

**Specimen Carp Lake**

with Carp to 35lbs

260 Doubles

£6 per day, £6 per night,

£75 full week

(Booking required on Carp Lake)

**CARAVAN & FOOD AVAILABLE**

Phone KEN and EUNICE

on **01636 821131**

## Northern Area – Stillwaters

D = suitable for disabled anglers

### Lake Helen, near Sutterton

2.75 acres mixed coarse lake. H Greeves, 01205-460681.

### Lake Ross Caravan Park, Pode Hole, Spalding

Small mixed coarse/carp lake with caravan pitches around the lake, near Coton, 01775 761690.

### Baston Fen Fishery, near Baston, Bourne

This is a varied complex of mixed coarse and specimen lakes with some very large bream present. Mrs Wyman, 01778 560607.

### Crowland Angling Club Lakes, Welland Bank, Crowland

Two small mixed coarse lakes - club members only. Tel Mrs A Brooke, 01733 210618.

### Tallington Fishery, near Tallington Level Crossing

Seven acre mixed coarse/carp lake. J Olver, 01780 740815.

### Cross Guns Pits, along North Bank of Nene, near Wryde Drain Pumping Station

Two small mixed coarse/tench pits - club members only. Spratts Angling Club, 01945 870020.

### Maxey Gravel Pits, near Maxey Village, Peterborough

A large complex of specimen/mixed pits. Deeping St James AC, 01778 346355.



Corby Boating Lake produces excellent mixed bags to float tactics.

### Gerards Carp Lakes, near Maxey

Pleasure and match angling lake. I Bridgefoot, 01945 780309.

### Redlands Pits, Lolham Level Crossing, West Deeping

Three lakes with mixed coarse, tench and rudd fishing. Deeping St James AC, 01778 346355.

### Ferry Meadows, Orton Road, Peterborough

A large lake with mixed coarse fishing, especially for bream and increasingly zander. Peterborough DAA, 01733 67952.

### Werrington Lakes, near Peterborough

Two specimen carp lakes adjacent to by-pass. N Cesare, 01733 570226.

### Yarwell Mill, near Wansford, Peterborough

A mixed coarse and carp lake with a substantial amount of river fishing as well. Mr K Usher, 01780 221860

### Grimsthorpe Lake, at Grimsthorpe Castle

36 acre lake with mixed coarse fishing, 01778 32205

### Launde Abbey Lakes, off A47 West of Rutland Water

A number of lakes with mixed coarse fishing including crucian carp. Miss Brough, 01527 286202.

### Corby Boating Lake, off A427 Corby

A mixed coarse, crucian carp and specimen carp fishery. Corby District Council, 01536 402551.

### Welland Lodge Fishery, near Market Harborough

A 1.25 acre lake with rudd, carp,

tench and large ornamental fish such as blue orfe. Season and day ticket, Welland Lodge Garden Centre, 01858 467926 or Bill Ilett, 01858 466792.

### Barnwell Lake, near Oundle

A mixed coarse and carp lake. Disabled access and platforms at some swims. Wellingborough Nene AC, 01933 53636.

### Barnwell Country Park, near Oundle

A public park with mixed coarse, carp and tench fishing. Disabled access at some swims. Chris Haines, 01832 273435.

### Sweethedges Farm, at Allextion, near Uppingham

Mixed coarse/carp lake. Brian Bray, 01527 86398.

### Welham Lake, off Welham to Great Bowden Road

Mature lake holding variety of mixed coarse fish. M Cooper, 0116 279 3258.

### Folly Pond, near Market Harborough Police Station

## STILLWATER TIPS

■ (Right): Red is an excellent colour when you're after bream. Red maggots, squatts and groundbait have accounted for scores of 100lb catches.



■ Always loosefeed at least two different areas using different baits. You can then alternate between the zones looking for fish and at the same time double your chances of catching.

■ Never ignore the margins, especially during the summer. Carp, tench and perch will readily feed right under your feet. Gently drop a floatfished caster, worm or grain of sweetcorn close to the nearside ledge.



Half acre mixed coarse lake with crucian carp. Nick Bale 01858 433067.

**Brook Meadow, near Market Harborough**

Small syndicate carp fishery. M Hart, 01858 880886.

**Aldwincle Pits, near Thrapston**

Two large gravel pits with mixed coarse species - mostly roach and bream. Kettering and Thrapston AA, 01536 517665.

**Elinor Coarse Lake, near Thrapston**

Next to Elinor Trout Fishery, a mixed lake with tench, bream and roach. M Foster 01933 622960.

**Islip Lake, access from Mill Lane, Islip**

A mature mixed coarse lake next to Harpers Brook and the River Nene, Kettering and Thrapston AA, 01536 517665.

**Thrapston Gravel to North of Thrapston**

A 150 acre mixed coarse fishery with a variety of specimen fish.

**Ringstead Island, near Thrapston**

Mixed coarse fishery between channels of the River Nene. Wellingborough and District Nene AC, 01933 53636.

**Pine Trees Lakes, near Wellingborough**

Complex with a variety of coarse fishing. Irthlingborough AC, Tel 01933 651508.

**South View Fishery, near Wellingborough**

Mostly carp in this gravel pit. M Summer, 01933 650457.

**Sywell Reservoir, near Northampton**

Mixed coarse lake famous for first class tench fishing. Wellingborough and District AC, 01933 53636.

**Castle Ashby Lakes, South East of Northampton**

Two of the lakes on this estate are open to day ticket anglers - Scotland Pond and Grendon Pond. Mixed coarse and match lakes, predominantly carp. M Hewlett, 01604 712346.



*Angling Times News Editor Richard Lee displays a fighting-fit Sywell tench.*

**Ditchford Pits, near Wellingborough**

Two shared pits with a variety of mixed coarse fishing, 01933 53636 or 01933 651400.

**Daventry Reservoir and Country Park**

Mixed coarse fishing with good bream catches in Autumn and big pike in the Winter. Rangers Office 01327 77193, Day Tickets on bankside.

**Glebe Lake, South of the A45 at Earls Barton**

A gravel pit with mixed coarse fishing. Mr Broom, 01604 712591.

**Ecton Gravel Pits, near Billing of A45**

Three gravel pits with mixed coarse, carp and specimen carp fishing. Northampton Nene AC, 01604 757589.

**Heyford Fishery, near Nether Heyford, West of Northampton**

A prolific mixed coarse and match lake stocked mostly with carp. There are more than 100 pegs including some suitable for disabled anglers. Trinders Tackle, 01327 702312.

**Hardwater Lake, South of the A45 at Earls Barton**

A large mixed coarse gravel pit. Earls Barton AC 01604 812059.

**Delepre Park Lake, South of Northampton**

A large mixed coarse lake with good tench fishing. Several disabled pegs. Northampton Nene AC, 01604 757589.

**Abingdon Park Lake, Northampton Town Centre**

A small park lake with mixed coarse fishing and some large carp. N Hunter, 01604 31814.

**Shelfley's Lake, outskirts of Northampton**

Shallow mixed coarse lake with mostly roach and bream. Northampton Castle AC, 01327 705092.

**Weedon Road Gravel Pit, Western side of Northampton**

Extensive mixed coarse gravel pit, known for its tench fishing. 01604 757589.

**STILLWATER TIPS**

■ (Right): Keep that loosefeed going in! A steady stream of maggots, casters or hemp falling through the water will draw fish right into your swim. But don't overdo it in Winter as a mere three to five baits introduced every few minutes will suffice.

■ When fishing a waggler, always remember to sink your line between rod tip and float, This ensures your rig is not pulled off line by the wind. The easiest way is to submerge your rod tip and make a few quick turns of the reel.



## Blue Lagoon, Southern side of Northampton

Actually a backwater of the River Nene, this mixed coarse lake can be very weedy. 01604 757589.

## Eastfield Park Lake, Northampton Town Centre

Mixed coarse fishery in the park. Mr Fors, 3 Narby Court, Eastfield, Northampton.

## Grendon Lakes, South East of Northampton

A complex of four gravel pits with mixed coarse fishing including large carp and pike. 01933 665335.

## Hollowell Reservoir, North West of Northampton

This reservoir has become a specimen fishery for most species of coarse fish. Anglian Water, 01604 781350.

## Billing Aquadrome, alongside A45 at Northampton

This caravan park has seven lakes of up to seven acres and holds a number of large carp and pike, 01602 408181.

## Fourways Fisheries, near Boston

Two gravel pits with mixed coarse fishing including specimen carp and tench. Mr Fisher, Fourways Fisheries, Trinity Nurseries, Mill Drove, Cowbit, Spalding, PE12 6AS.

## Lakeside Country Club, Northampton Road, Rushden

Mixed coarse fishing particularly for rudd and carp. Easy access



Former World champion Dave Wesson plays a carp to the net at Drayton Reservoir.

off A45. Bar, restaurant and accommodation on site, 01933 53808.

## Orchard Pond, South Humberside (D)

This 0.25 acre pond contains mixed coarse fish. Day tickets are available on site. No groundbait. For details contact Mr A Smith, 7 Silver Street, Winterringham, Humberside, telephone 01724-732498. Season: 1 May - 30 November.

## Target Lake, Barton upon Humber

A 6 acre lake on the Humber bank containing roach, bream and carp. Fishing is by season ticket only. Contact Mr M Foster, 8 Aston Mall Drive, North Ferriby, telephone 01482 634154. Season: Open all year.

## Drayton Reservoir, North of Daventry

Stocked with a lot of small carp, this water can produce massive hauls when on song. 01442 234952.

## Fish Pond Farm, Usselby (D)

Two lakes containing mixed coarse fish species. One lake of 1.5 acres and another of just over 2 acres. Day tickets are available on the bank. Season tickets are also available. Contact the owner at 374 Warrington Road, Culceth, Cheshire. Telephone 01673 828219. Season: March - October.

## Aby Pond, Aby, Alford

A 2 acre lake containing predominantly carp to 28lb. Day tickets are available from Mr Harrop, telephone 01507 480225. Season: Open all year.

## Hoe Hill Lake, Barton-on-Humber (D)

This lake, sited on the banks of the River Humber contains roach, rudd, carp, tench, bream and chub. Fishing on this nine acre lake is by day ticket and night fishing is available by appointment. Anglers should contact JC/KD Smith, Pasture House Fishery, Barton-on-Humber, telephone 01652 635119. Season: Open all year.

## East Halton Fishing Lakes, Marsh Lane, East Halton

A 15 acre lake containing mixed coarse fish. Fifty five pegs are available on day tickets from the bank. Contact Winter Bros, telephone 01469 540238. Season: Open all year.

## Kingfisher Lodge, Cross Carr Lane, Hibaldstow

A 3 acre coarse lake. Best fish of recent years were carp to 20lb+, chub 5lb, tench 6lb and bream 6lb. Day tickets are available on the bank. Rules include no night fishing, no groundbait and no carp in nets. Caravan and camping site next to the lake. Contact Nigel, telephone 01652 652210. Season: Open all year.

## Pasture House Fishery, Barton-on-Humber

A complex of three lakes totalling 7.5 acres. The largest lake (seven acres) contains roach, chub, rudd, tench, bream and carp. Day tickets are available from the owner. Night fishing is available by appointment only. Contact (see Hoe Hill Lake). Season: Open all year.

## Tetney Lock Angling Club The Wharf, Tetney Lock, Grimsby

This 3.5 acres coarse lake

### STILLWATER TIPS

■ (Right): Try flavouring your baits to tempt a few more fish. Curry powder is tops for making maggots irresistible to roach.

■ Don't just cast out a bait and wait for something to happen. Sometimes you have to keep twitching the bait to get the fish to bite.

■ Buy a copy of **Angling Times** and check out the stillwater fishing guide for the most up-to-date fishery information from around the country.



## STILLWATERS

contains rudd, roach, bream, tench and carp. Fishing is for members only and there is a one to two year waiting list for membership. Groundbait is banned and carp must not be kept in nets. For further details contact Mr Norman, telephone 01472 388488. Season: Open all year.

### **Warren Pond, Warren Road, North Somercotes (D)**

A small pond containing tench, roach, carp, rudd, perch and bream. Further details are available from the owner, Mr Lewis, telephone 01507 358350. Season: Open all year.

### **Mill Road Fishing Lakes, Skegness (D)**

Two lakes totalling 3 acres. Containing stocks of mainly common and mirror carp, many into double figures. Roach, bream and tench are also present. Day tickets are available from the owner on site. Further information from Mr P Cumberworth, Mill Road, Addelethorpe, Skegness, telephone 01754 767586. Season: All year.

### **Brickyard Fishery, Louth (D)**

This 4.5 acre fishery has good stocks of mixed coarse fish. Fishing is by day ticket only. Interested parties should contact Mr I Cartwright, Brickyard Fishery, South Somercotes, Louth, telephone 01507 358331. Season: Open all year.

### **Charles Street Pond, Charles Street, Louth**

This 1 acre lake contains roach, crucian carp and tench and is leased by Louth CAWC. Season tickets only, which can be obtained from local tackle shops. Season: Open all year.

### **Vickers Pond, Main Road, Saltfleetby, Louth**

A 1.5 acre lake containing tench, bream, carp and grass carp. Day tickets are available on site. Groundbait is not allowed and carp must not be kept in nets.



*A nice catch taken at Mill Road Fishing Lakes.*



*Open all year round, Mill Road Lakes' three acres holds many different types of fish.*

## MAINSTREAM FISHERIES

For all aspects of Fisheries Management and fish removal.  
Electro-fishing with a fully qualified team.  
Using hand-held anodes or a boom boat.  
Surveying & Management plans.  
Coarse fish bought & sold.  
Fish Rescue Service.  
**Tel: 01754 610723 or 0831 706346**

## SKEGNESS

Rainwater Lake  
Coarse Fishing  
Holidays  
Value For Money accommodation available.  
**Telephone: 01754 765783**

## A D MOORE FISHING TACKLE

124 HIGH ST,  
BARWELL,  
LEICESTER  
Open days. 8.30 - 5.30pm  
FULL RANGE OF TACKLE,  
QUALITY BAIT  
YOUNG ANGLERS CATERED FOR  
Call in or phone  
**01455 842450**

## EXCELLENT COARSE FISHING

Beautiful Lakes and River areas.  
Over 28 acres.  
Fishing down til dusk.  
Memberships available now at £70.00  
Day Tickets £6.00 per day  
For more information contact Louise at:  
**SIBSON FISHERIES**  
Stibbington, Peterborough  
**(01780) 782621**

Contact Mr Vickers on 01507 338272. Season: Open all year.

## Grange Farm Leisure Limited, Mablethorpe

This new fishing complex consists of 4 coarse lakes, 1 trout lake and 1 carp lake. Angling is limited to day tickets only, which are available on site. There is also a tackle and bait shop and cafe on site. Contact Grange Farm Leisure, Alford Road, Mablethorpe, telephone 01507 472814. EA licences sold here.

## Oham Lake, Alford

This two acre coarse fishery runs on a day ticket basis. There is a small tackle shop and toilets on site for anglers. Contact Mr C Beckenham, Maltby le Marsh, Alford, telephone 01507 450623. Season: Open all year.

## Queen Elizabeth Park Pond (D)

A 1 acre pond open to disabled anglers and senior citizens of the Grantham Angling Association. Stocked with rudd, tench and crucian carp. Contact Mr W Hutchins, telephone 01476 75628.

## Belleau Bridge Farm Lake, Belleau Bridge, Alford

A 6 acre coarse fishery. Day tickets are available from the owner. Mr Harrop, telephone 01507 480225. Season: Open all year.

## STILLWATER TIPS

■ (Right): When fishing for carp on the surface don't just settle for bread as bait. Floating breakfast cereals, cat or dog biscuits can tempt big fish.

■ When using groundbait, make sure you are moulding the balls to suit the depth you are fishing. In shallow water, you need only squeeze the balls gently. For deeper water the balls must be squeezed together tightly so they reach the lake bottom before breaking up.



## Bells Yard Lake, Horncastle

A 0.5 acre lake containing roach, bream, pike, perch, tench and rudd owned by Horncastle Angling Club. Season tickets only available from Syncro Sports, Horncastle. Members may also fish the Horncastle Canal (see rivers section). Contact the Secretary Mr K Dannatt, telephone 01507 527277. Season: Open all year. Close season tickets are available to those holding membership for one year or more.

## Sycamore Lakes, Burgh Le Marsh

This site consists of three lakes totalling 4 acres containing carp, tench, perch, roach, rudd and golden orfe. Carp to 20lb have been caught, day tickets are

available on the bankside. Also on site is a new Lakeside cafe and tackle shop. Contact: Jose and Joy Giraldez, Skegness Road, Burgh Le Marsh, Lincs. Tel: 01754 811411.

## Revesby Reservoir and the Wong

The 35 acre reservoir and 4 acre Wong are sited within the grounds of the Revesby Estate. The reservoir is stocked with roach, tench, bream, perch, eels and pike and can be fished on day tickets between dawn and dusk only. The Wong is the syndicate fishery of the Wong Carp Anglers Association and is stocked with common and mirror carp. More information is available from the Revesby Estate office, Revesby, Boston, telephone 01507 568395. Season: 16 June - 14 March.

## Lakeside Leisure Park, Trunch Lane, Chapel-St-Leonards

Two lakes of 3 acres and 0.5 acres. Species include carp, roach, rudd, perch, dace, chub, tench, crucian carp and bream. Day tickets are available from the bank. Contact Mr Cook, telephone 01754 872631. Season: Open all year.

## Skegness Water Leisure Park, Walls Lane, Ingoldmells (D)

This 7 acre lake contains roach, tench, perch, bream, golden orfe and carp. Day tickets are available from the manager's office and night fishing is also available. Groundbait is not allowed. Contact Ellis Bros, telephone 01754 769019. Season: March to November.

## Dennis Rainwater Lake, Low Road, Croft, Skegness

A 1 acre lake containing carp, rudd and tench. Day tickets are available on the bank. Contact Mr or Mrs Dennis, telephone 01754 765783. Season: Open all year.

## Grooby's Pit, Bridgefoot Farm, Thorpe Culvert, Wainfleet (D)

A 1.5 acre lake containing carp, bream, tench, rudd, roach and pike. Day tickets are available on the bank. Contact 01754 880216 for further details. Season: Open all year.

## Rossways Water, Boston

There are two coarse fisheries on this site. A 1 acre lake and a 0.75 acre pond. Particularly suitable for juniors. Mixed coarse fishery including carp to 30lb plus. Day tickets available from the owner on site. Toilets. Caravans available to let on site. Groundbait is banned, barbless hooks only and keepnets must be dipped. For details contact Mrs C Neesham 01205 361643. Season: Open all year.

## Dykes Cottage Lake, Chapel Hill, Lincoln

This 0.75 acre lake is a well managed mixed coarse fishery. The owner's rules include no groundbait, no keepnets and no hemp/tares. Day tickets are available from the owner. Mrs



Carp weighing 20 lb have been caught at Sycamore Lakes.

Webster, telephone 01526 343315. Season: Open all year.

### **Tim Hall Lake, Dorrington**

This 1 acre lake contains a stock of mixed coarse fish. Fishing is by day ticket only which are available on site

Contact Mr T Hall, Northings Farm, Dorrington, Lincoln, telephone 01526 833100 or 01526 832372. Season: Open all year.

### **Swan Lake, Thorpe Culvert, Wainfleet**

A 2 acre lake containing roach, carp, tench, rudd and perch. Fishing is available to those staying at the caravan site only. For further details contact Mr Caton, telephone 01754 881456. Season: 15 March to 31 October.

### **Goltho Lake, Goltho, Wragby (D)**

A 2 acre lake containing roach, rudd, chub, tench, bream, carp and dace. Day tickets are available on the bank and night fishing is also available. For details contact Mr Bruntlett, telephone 01673 858358. Season: Open all year.

### **Boultham Park Lake, Lincoln**

This 4.5 acre lake is situated within the grounds of Boultham Park, and is run by Lincoln AA. The lake contains mixed coarse fish including roach, bream, tench, chub, common and crucian carp. Day tickets are available on the bank and membership books are available from local tackle shops. Membership books also allow the angler to fish a number of other Lincoln AA waters including Hartsholme Lake, Starmers Pit, Upper Witham, River Till and the Lower Witham (see rivers section). Further information can be obtained from the Lincoln Angling Association, c/o 74 Edgehill, Brant Road, Lincoln, telephone 01522 722781. Season: All year.

### **Hartsholme Lake, Lincoln**

This 27 acre lake is situated in the grounds of Hartsholme Country Park. The lake is run by Lincoln AA and contains tench to 5lb, bream to 4lb, roach, perch and carp. Membership books and day tickets are

available on the bank or from local tackle shops. For more information see Boultham Park Lake. Season: All year.

### **Starmers Pit, Lincoln**

This lake is controlled by the Lincoln AA containing pike to 31lb, eels to 6lb 8oz, carp to 28lb, bream and tench. Season and day tickets are available on the bank or from tackle shops.

For more information see Boultham Park Lake. Season: Open all year.

### **Richmond Lakes, Lincoln (D)**

A complex of four lakes totalling 44 acres. The lakes all have stocks of roach, tench, bream, pike and carp, some of which are well over 20lb. Fishing is by day ticket only. Anglers should note there are no seed baits or dogs allowed on site. Contact Mr L A Kirk, Richmond Lakes, North Hykeham, Lincoln, telephone 01522 681329. Season: Open all year.

### **Denton Reservoir, Grantham**

This large reservoir is run by Grantham Angling Association. Fishing is by membership book only which are available from local tackle shops. The lake contains mixed coarse fish including large carp.

Other waters which can be fished on the Grantham book include Brickyard Pond, Grantham Canal and the River Witham. (See rivers section). The Secretary of GAA is Mr W Hutchins, telephone 01476 75628. Season: 16 June - 14 March.

### **Brickyard Pond, Buckminster**

This 2 acre pond is run by Grantham Angling Association. The fishery contains good stocks of crucian carp, tench, roach and chub. Fishing is by membership book only. Membership entitles the angler to fish all Grantham AA waters (see Denton Reservoir). Season: 16 June - 14 March.

### **Lakeside Farm, Frieston**

A 3 acre mixed coarse lake. For more details contact Mrs J Ulyatt, telephone 01400 272758.

### **Oakhill Leisure, Lincoln**

A 5 acre water containing tench up to 7lb, carp to 10lb, rudd, roach and bream. Day tickets available on site. Caravan park adjacent to lake. Details from Mr and Mrs B Holmes, telephone 01522 868771. Season: Open all year.

### **Woodlands Fishery, Spilsby**

Three lake complex. Mixed coarse fishing. No boilies or particle baits. Small tackle shop, toilet and food available. Day tickets on site. Contact Chris Sibley, telephone 01790 754252.

### **Alvingham Fisheries, Louth**

1.5 acres. Roach, rudd, tench and carp. Tickets from owner on site. No keepnets or groundbait. One rod only and barbless hooks only. Open all year. Contact P Branson 01507 327012.

### **Homestead Lake, Immingham**

This 30 peg lake holds stocks of roach, bream, tench, perch, common, crucian and mirror carp. Further information can be obtained from Immingham Town Council, Angling Bailiff, Civic Centre, Pelham Road, Immingham. Tel: 01469 574606. Season: Open all year.

### **Toft Newton Fishery, Market Rasen**

This 40 acre reservoir is stocked with rainbow and brown trout. Day tickets available at the fishery office. Disabled persons facilities available. Contact Mr J Foster, Toft Newton Reservoir, Market Rasen, Lincoln. Te: 01673 878453. Season: March to December.

### **The Lobby Field Sports Centre, Binbrook**

This site has two lakes, a trout lake of 1.5 acres and a coarse lake of 0.75 acres containing carp. No groundbait allowed. Trout lake is fly only. Day tickets available on the site. Contact Mr D Price, The Lobby Field Sports Centre, Orford Road, Binbrook. Tel: 01472 398782.

### **Thorpe Le Vale Fishery, Louth**

The lakes totalling 5 acres, this

# ASHBY PARK

## HORNCASTLE, LINCS

Touring and Camping sites with electric hook-up

**6 LAKES**

**NO CLOSED SEASON**  
Match bookings  
Static caravans for sale

**Tel: 01507 527966**

## LINCOLNSHIRE

**Small, peaceful caravan park with new facilities.**

Fully equipped static holiday caravans for hire.

Tents, Tourers and Motorhomes welcome.

Excellent fishing alongside site.

Within easy reach of Spalding and King's Lynn.

**Tel for brochure 01945 440346**

## LAKE ROSS CARAVAN PARK

DOZENS BANK,  
WEST PINCHBECK  
SPALDING  
LINCS PE11 3NA

**TELEPHONE 01775 761690**

for brochure send SAE  
Small family run  
tourer park with  
coarse fishing lake.  
Open all year round,  
offering friendly  
atmosphere.

Licensed club house and  
all amenities including  
electric hook-ups

trout fishery contains both rainbow and brown trout. Fishing is by fly only, with segregated lure fishing. Contact Mr G Wildsmith, Thorpe Le Vale, Ludford, Louth, Lincs. Tel: 01472 398978.

### **Woodthorpe Hall Lake, Alford**

A 1 acre lake containing rudd, tench, crucian carp, common carp. Day tickets available from the machine near the shop. Also on the site are small shop, accommodation, restaurant and bar. For details contact the owner, Mrs Stubbs, Woodthorpe Hall, Woodthorpe, Alford, Lincs. Tel: 01507 450294.

### **Linden Walk Pond, Louth**

Wellington AC own this 1.5 acre lake containing mixed coarse fish. To fish this water you must obtain a Wellington AC Book. Prospective members must live within a 10-mile radius of Louth. Also available with this book, fishing at Picks Bay near Tattershall on the River Witham and also on the Long Eau at Willow Farm, Castle Carlton, Louth. Contact Mr Siddele, Secretary, Wellington AC on 01507 603908. Season: Pond open all year. Rivers normal close season.

### **Olsten Fishery, Louth**

This 0.5 acre lake is a mixed coarse fishery but predominantly tench and carp fishing is by day ticket which are available from the house. Contact Mr R Oliver, Mill Lane, Legbourne, Louth, Lincs. Tel: 01507 607432. Season: Open all year.

### **Rod and Line Caravan Park Area, Wainfleet**

This 1 acre lake contains carp, roach, tench, rudd and chub. Fishing is free for anglers staying at the caravan site only. Contact: Mr F E Shaw, Lymn Bank East, Thorpe St Peter, Wainfleet, Skegness, Lincs. Tel: 01754 880494.

### **Willow Farm, Louth**

Fishing on this mixed coarse fishery is by day tickets, also available are season tickets. Contact Mr Clark, Willow Farm, Great Carlton, Louth, Lincs. Tel: 01507 338540. Season: Open all year.

### **Ashby Park Lakes, Horncastle**

A complex of six lakes totalling 14 acres of mixed coarse fishing plus a 450 metre section East bank of River Bain on this site. In 1994 the best bag weight was 117lb. Day tickets obtainable on the site, no livebait and no carp to be kept in nets. All lakes have

good access for disabled anglers. A caravan site plus caravans to let (reduced rate fishing). Further details are available from the owners, R & M Francis, Tel: 01507 527966. Season: Open all year.

### **Hill View Lakes, Hogsthorpe**

Three lakes, one of 2 acres containing carp, the other two being 0.75 acres each, a mixed coarse fishery. No keepnets or boilies and barbless hooks must be used all lakes. Toilets and refreshments on site. Contact Mr Dave Froggatt, Skegness Road, Hogsthorpe, Chapel St Leonards, Lincs. Tel: 01754 872979. Season: Open all year.

### **Lakeside, Langworth**

Site comprises three coarse lakes and two "bite a chuck" lakes. Contact Mr R Riviere, Lakeside, Barlings Lane, Langworth, Lincs. Tel: 01522 595933.

### **Willow Lakes, Grantham**

This site has five lakes, four are mixed coarse fishing, one is mainly carp. Tickets are available on the site. Only barbless hooks are allowed, hemp and groundbait are banned. Keepnets are not allowed on the carp lake.

Contact: Mr Chilton, Newark Road, Foston, Grantham, Lincs. Tel: 01400 282190.

### **Barton Outdoor Pursuits, Barton on Humber**

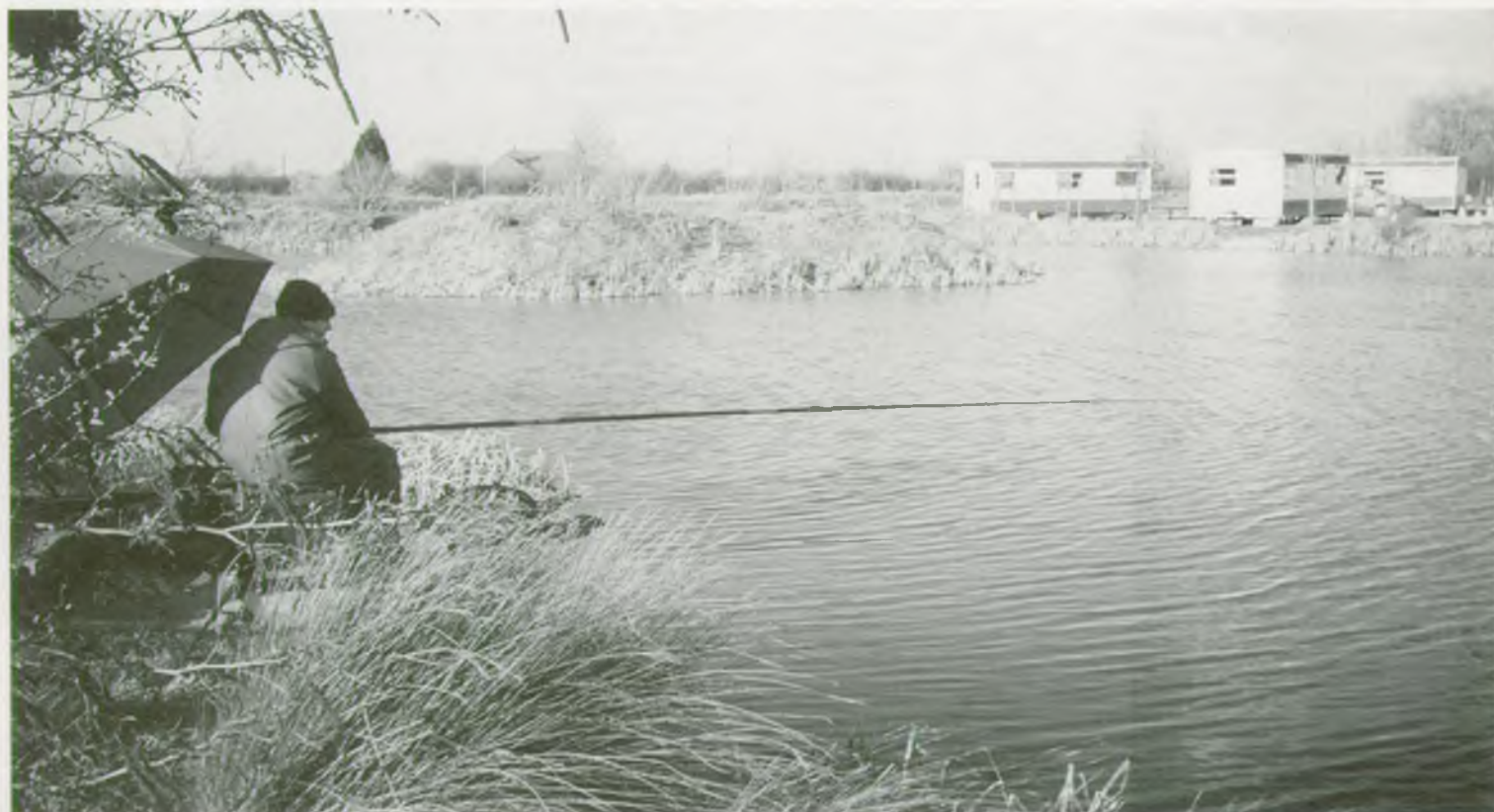
This 30 acre lake is used for both coarse fishing and watersports. Tickets are restricted to HUMBERSIDE YOUTH GROUPS ONLY. Contact: Rory Edwards, Outdoor Pursuits Centre, Far Ings Road, Barton on Humber. Tel: 01652 634933. Season: Open all year.

### **Barton Broads, Barton on Humber**

An 11 acre lake containing roach, bream, rudd, tench, carp and catfish. Day tickets are available from the owner, Mr Fox, Barton Broads, Malkin Road, Barton on Humber. Tel: 01652 634742. Season: Open all year.

### **Pelican Pond, Barton on Humber**

This large 80 acre lake holds stocks of roach, bream, pike, tench, eels. Very large nets of fish at favourable times of year. A season ticket water, available on the bank. Interested parties should contact Mr Bontoft for more details at 2 Crakedale Road, Winterton, South Humberside. Tel: 01724 732858.



*Willow Lakes has five lakes for the angler to choose from.*

**ANGLING CLUBS AND ASSOCIATIONS IN NORTHERN AREA**

**1 Alumsac AC**  
Mr Bradbury, 01536 513041

**2 Asfordby Society of Anglers**  
Mr Bob Dyer, 01664 67705

**3 Auburn Angling Club**  
c/o Mr Tony Satchel, The Royal Oak, Auburn, Lincoln

**4 Aveling Barford Angling Club**  
c/o K Hall, 7 Seventh Avenue, Alma Park, Grantham, Lincs

**5 Boston & District AA**  
Mrs J Sawyer, Hatfield, Wyberton West Road, Boston, Lincs PE21 7LQ 01205 350088

**6 British Waterways Board**  
Mr J Ellis, 01442 234953

**7 Collingham AA**  
P Thomas, 61 Station Road, Collingham, Newark, Notts NG24 7RA

**8 Cotterstock DAA**  
Mrs Popplewell, 01832 73671

**9 Coventry & District AA**  
R Pimlott, 01203 454225

**10 Crowland AC**  
Mrs A Brooke, 01733 210618

**11 Deeping St James AC**  
D Bailey, 01778 346355

**12 Duke of Wellington AC**  
78 Keddington Road, Louth, Lincs

**13 Earl's Barton AC**  
Mr P Tipler, 01604 812433

**14 East Midland Federation of Anglers**  
W Hutchins, 01476 75628

**15 Eastfield AA**  
J Ford, 3 Newby Court, Eastfield, Northampton

**16 Far Cotton AC**  
T Fowkes, 01933 67339

**17 Glebe AC**  
C Broom, 2 Crockett Close, Links View Estate, Northampton

**18 Grantham Angling Association**  
W J C Hutchins, 28 Cottesmore Close, Grantham, Lincs

**19 Holbeach AC**  
H Boswell, 01406 24035

**20 Horncastle Angling Society**  
Mr G Alder, The Cottage, Sandy Lane, Woodhall Spa, Lincs. LN10 6UR 01526 353619

**21 Irthlingborough and Raunds AC**  
Pat Gallagher, 01933 651508

**22 Kettering and Thrapston AC**  
L Garrett, 01536 517665

**23 Leicester DAS**  
Justin Mould, 01780 782789

**24 Lincoln and District Angling Association**  
c/o Jennifer Wolvers, 74 Edgehill, Lincoln LN5 9TZ

**25 Lincsgran Sports Club**  
F J Walker, British Sugar Plc, Station Road, Bardney, Lincoln LN3 5UH

**26 Long Buckby**  
Mr Hill, 33 South Close, Long Buckby, Northants

**27 Mablethorpe, Sutton and District AC**  
Mr S Oxborough, 6 Ormsby Close, Cleethorpes, South Humberside DN35 9PE

**28 March AC**  
R Fitzjohn, 01354 53223

**29 Market Harborough AC**  
Nick Bale, 01858 433067

**30 Nene and Welland Angling Consultative Association**  
Mr G Bibby, 5 Ermine Way, Sawtry, Cambs 01487 831718

**31 Nettleham Angling Club**  
J Bremner, 46 Fairleas, Branston, Lincoln LN4 1NW

**32 New Leake Angling Club**  
T L Cuppleditch, Basses Farm, Stickford Fen, Boston, Lincs PE22 8HJ

**33 Northampton Castle AC**  
T Rodhouse, 01327 705692

**34 Northampton Nene AC**  
Mrs P Walsh, 01604 492652

**35 Oundle AA**  
D Laxton, 01832 272289

**36 Peterborough DAA**  
P Doel, 01733 204849

**37 Ransom Hoffman Pollard Angling Club**  
G Fletcher, RHP Bearings Ltd, PO Box 18, Northern Road, Newark, Notts

**38 Ringstead AC**  
J Marlow, 01933 680816

**39 Rushden and Higham Ferrers Irchester AC**  
D Parkin, 01933 651400

**40 Ruston Fishing Club**  
Mr R Thorley, 121 Boultham Park Road, Lincoln

**41 Salmon and Trout Association**  
c/o Mr R Gibson Bevan, Little Langley, Bardney Road, Wragby, Lincs

**42 Scunthorpe and District AA**  
M Storey, 74 Appleby Lane, Broughton, Brigg, South Humberside

**43 Sheffield Piscatorial Society**  
Mr Anderson, Farm House, Retford, Notts

**44 Sibson Fisheries**  
J Bradshaw, 01780 782621

**45 South Kyme Golf Club**  
E C Mablethorpe, Skinners Lane, South Kyme, Lincoln LN4 4AE

**46 South Witham Angling Club**  
R Bradley, 24 Thistleton Road, Market Overton, Oakham, Leics

**47 Spratts AC**  
K Wilkinson, 01945 870020

**48 Stamford Welland AC**  
G Bates, 01780 751060

**49 Surfleet AC**  
Trevor Rolfe, 01775 723944

**50 Tetney Lock Angling Club**  
B Norman, The Wharf Tetney Lock, North Coates, Grimsby, South Humberside

**51 Towcester AC**  
Mr Pannet, 30 Bickerstaffe Road, Towcester, Northants

**52 Tydd Gote AC**  
A Loodger, 01406 362050

**53 Uppingham and District AA**  
David Johnson, 01572 821128

**54 Wansford, Yarwell and Nassington AC**  
Steve Longfoot, 2 Dovecote Close, Yarwell, Peterborough PE8 6PT

**55 Warmington AC**  
Mr Bailey, 2 Buntings Lane, Warmington, Near Peterborough

**56 Wellingborough and District Nene AC**  
Richard Blenkarn, 01604 847106 or 01604 820380

**57 White Horse Angling Club**  
Peter Rumble, 21 St Thomas' Close, Warmsworth, Doncaster, Yorks DN4 9LG

**58 Witham and District Joint Anglers Federation**  
Mr S Oxborough, 6 Ormsby Close, Cleethorpes, South Humberside DN35 9PE

The W & DJFAA consists of seven clubs, each of which pays a subscription on its membership books to fish waters held by the Federation. Membership of any of the following clubs allows anglers to fish Federation waters:

- Lincoln and District Angling Association**
- Rotherham and District United Anglers Federation**
- Boston and District Anglers Association**
- Grimsby and District Amalgamated Society of Anglers**
- Sheffield Amalgamated Anglers Society**
- Workshop and District Amalgamated Anglers Association**
- Newark and District Piscatorial Federation.**

**59 Worthington Simpson Angling Club**  
G V H Pickering, 31 Wilfred Avenue, Balderton, Newark, Notts NG24 3DS

# THEY'RE THE

# Big Daddies!



How does your rod licence fee, chicken manure and a gland from a continental carp's brain produce millions of battling barbel, chub, dace and roach for British rivers? The Environment Agency's Calverton Fish Farm tell you how.

**W**HEN you hand over your hard-earned cash for a National Licence – do you ever stop and think where the money actually goes?

Most anglers probably don't realise that the funds raised from licence sales support the biggest stocking programme of its kind in the world!

The Environment Agency's breeding programme is based at Calverton, North-East of Nottingham.

Covering 16-acres, the site is manned 24-hours per day, and houses 36 stock ponds, nurseries, a warm water hatchery and a laboratory.

EA Fish Rearing Officer Alan Henshaw is the boss at Calverton, and Nick Eyre

stands as his right-hand man – the Batman and Robin of the fishing world – perhaps not, but both are coarse anglers and incredibly proud of what they've achieved.

Calverton's massive stocking programme has already helped breathe life into rivers and stillwaters, right across the Anglian region.

The on-going operation also replaces countless fish which are killed in pollution incidents every year.

Around 500,000 fish are available from November each year – three quarters of this figure are set aside to replenish rivers which have lost stocks through pollution, or to re-populate fishless rivers – these are all free of charge.



*The barbel hatching is carefully managed.*

The remainder are sold on to angling clubs or commercial fisheries, with the monies received helping to keep costs down on the farm.

Any recipient of these fish can be 100 per cent sure they are disease-free and in fighting-fit condition.

The first phase of the breeding cycle involves a trip to an accommodating angling club, who are willing to lend healthy brood fish from their own waters.

A 5 lb barbel can produce up to 10,000 eggs – in the wild only a tiny amount of these would survive predators, poor conditions etc.

But the disease and predator-free environment Calverton offers means that most will survive, and head to wherever needs them.

Healthy fish are selected from different waters every year, rather than the same venue, which could run the risk of narrowing the gene pool.

After capture by electro-netting, the fish are taken back to Calverton's quarantine tanks for a thorough health check.

A major problem discovered by fishery staff was getting the female fish to spawn once taken away from its natural environment.

The answer came in the form



*Three steps of barbel growth at Calverton. From left, a two-inch long fish after the initial fry stage. The fish grow to five inches after a year, and finally the 9-10 inch fish are ready for release.*



*Left: These men have probably had the biggest-ever impact on British river angling – Calverton management team Alan Henshaw (left), and Nick Eyre.*

*Right: Lucky angler Bill Neill caught this brilliant trio of battling barbel from the Great Ouse near Newport Pagnell. One day, fish from Calverton could grow as big as this.*

of the pituitary glands from the brains of carp bred in the Czech Republic and Rumania.

Carp are a staple food in this former communist country, specially farmed for human consumption – just like salmon and trout in other countries.

The glands are taken from the waste products usually thrown away or used as animal fodder – no fish are killed purposely for the gland. A powerful hormone is extracted from the gland, and when ground down, is injected into the fish, inducing them to spawn.

Although the gland is expensive, at around £160 per gramme, there's more than enough to ensure millions of new fish for the British angling public.

Next step is for the female eggs and male milt to be stripped by hand, then thoroughly mixed to fertilise them. Despite modern science, the best tool so far for the job has been a swan or goose feather!



*A tiny Calverton fry.*



*Powerful hormones are used to induce fish to spawn.*

# WROXHAM ANGLING

A SHOP FOR ALL ANGLERS

**F**riendly, Expert Advice

**I**ncreased & Expanded Tackle Stocks

**S**tocks of all Leading Names

**H**uge stocks of Pike Lures/Tackle

**I**nformation and News on the Broads

**N**ext to the River

**G**round Bait & Pike Baits

**OPEN  
EVERY  
DAY  
DURING  
THE  
SUMMER**

Also at:  
**NORWICH ANGLING CENTRE**  
476, Sprowston Rd, NORWICH  
TEL: 01603 400757

**STATION ROAD,  
WROXHAM**  
TEL: 01603 782453



## BRUNDALL ANGLING CENTRE



- DAIWA ● SHIMANO ● SUNDRIDGE ● MIDDY ● DAM ● SILSTAR
- DRENNAN ● MAXIMA ● AIKEN ● TUBERTINI ● FOX ● NASH
- SOLAR ● HUTCHINSON ● GOLD LABEL ● TRI-CAST ● CENTURY
- COLEMAN ● E.T. ● MARVIC ● ABU ● GARDNER etc etc etc



LARGE RANGE OF AMERICAN PLUGS & LURES

CARP, PIKE & MATCH FISHING SPECIALISTS



**BAIT FROM NUTRABAITS, DAVE THORPE, KEVIN NASH, MAINLINE,  
RICHWORTH, STARMER, SENSAS & VAN DEN EYNDE**

OPEN 7 DAYS A WEEK 8am TILL LATE

**(01603) 715289** RIVERSIDE, BRUNDALL, NORWICH

Then the eggs are stored in a sterile hatchery at the perfect temperature for incubation. This can be anything between 3-30 days depending on the particular species.

When the larvae hatch they are fed on tiny invertebrates, and when their baby stomachs can take it, they're weaned onto high protein pellets.

The fry can be induced to pack on the pounds by controlling the amount of heat and light, and are literally fooled into thinking it's Summer – all year round!

Once they have grown on further, the fish are moved to the huge growing ponds outside. 18 of these are covered by a greenhouse type affair to control water temperature.

The richly-coloured water is packed with natural food, courtesy of large amounts of chicken manure, shovelled in to boost the growth of zooplankton on which the fish feed.

The main target of Calverton is to breed chub, roach, dace and barbel, to as large a size as possible over 10cm over two years. Then they are released in which ever water requires them.

Around 90 per cent of barbel reared at Calverton are stocked into rivers – the remainder heading for stillwater fisheries.

Calverton staff are mindful of the controversy surrounding barbel in stillwaters.

But Alan admitted: "We produce hundreds of thousands of barbel in stillwater conditions, and we would be the first to know if there was any cause for concern. As long as they are introduced into a water where



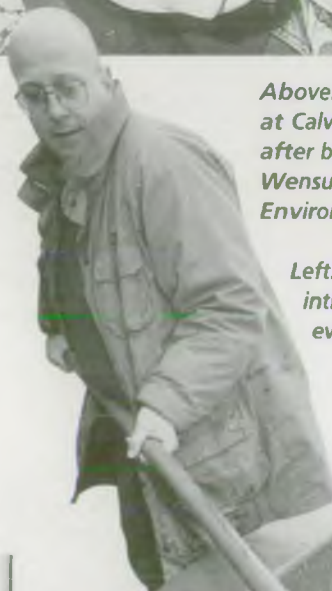
*Above: These terrific young barbel, bred at Calverton, were caught by John Nunn after being stocked into the River Wensum at Lyng, Norfolk, by the Environment Agency.*

there is suitable bottom feeding, nothing we have seen leads us to believe there is any problem."

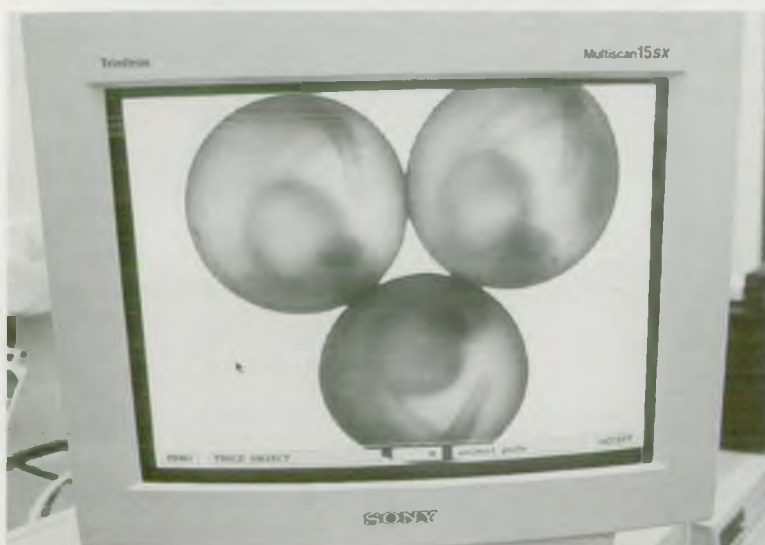
It's obvious the whole staff believe in the work they carry out, and are committed to bettering the quality of our water life.

Said Alan: "The work we do here is ground-breaking stuff, and to be a part of that gives you a real buzz."

● Angling clubs who want to buy fish can contact Calverton on: 01159 663174.



*Left: Small barbel like these are introduced into the Anglian Region every year.*



*The latest technology is used in the rearing process.*

# Welcome to the Eastern Area

Covering Norfolk, Suffolk and Essex, Anglian Region's Eastern Area offers a wide variety of landscapes, with some fabulous river fishing in stunning surroundings.

In the Norfolk and Suffolk District the Rivers Yare and the Bure, winding their way into the Broads to the coast, are renowned for their big bream fishing, and a string of 6lb plus specimens are banked every year. Also, the River Waveney produced an 8lb bream three seasons ago – a fish which made the front page of the *Angling Times*.

The rivers tend to hit top form in Winter when the boat traffic is minimal, but those prepared for an early start in Summer still find some great pleasure fishing, particularly with the roach on tidal stretches of the Yare and Bure. The River Thurne, which

once boasted the British pike record, continues to produce loads of specimen predators every year.

A good proportion of the fishing in the Area is free, particularly on the Broadland rivers.

Constable country, the delightful River Stour and numerous well-stocked

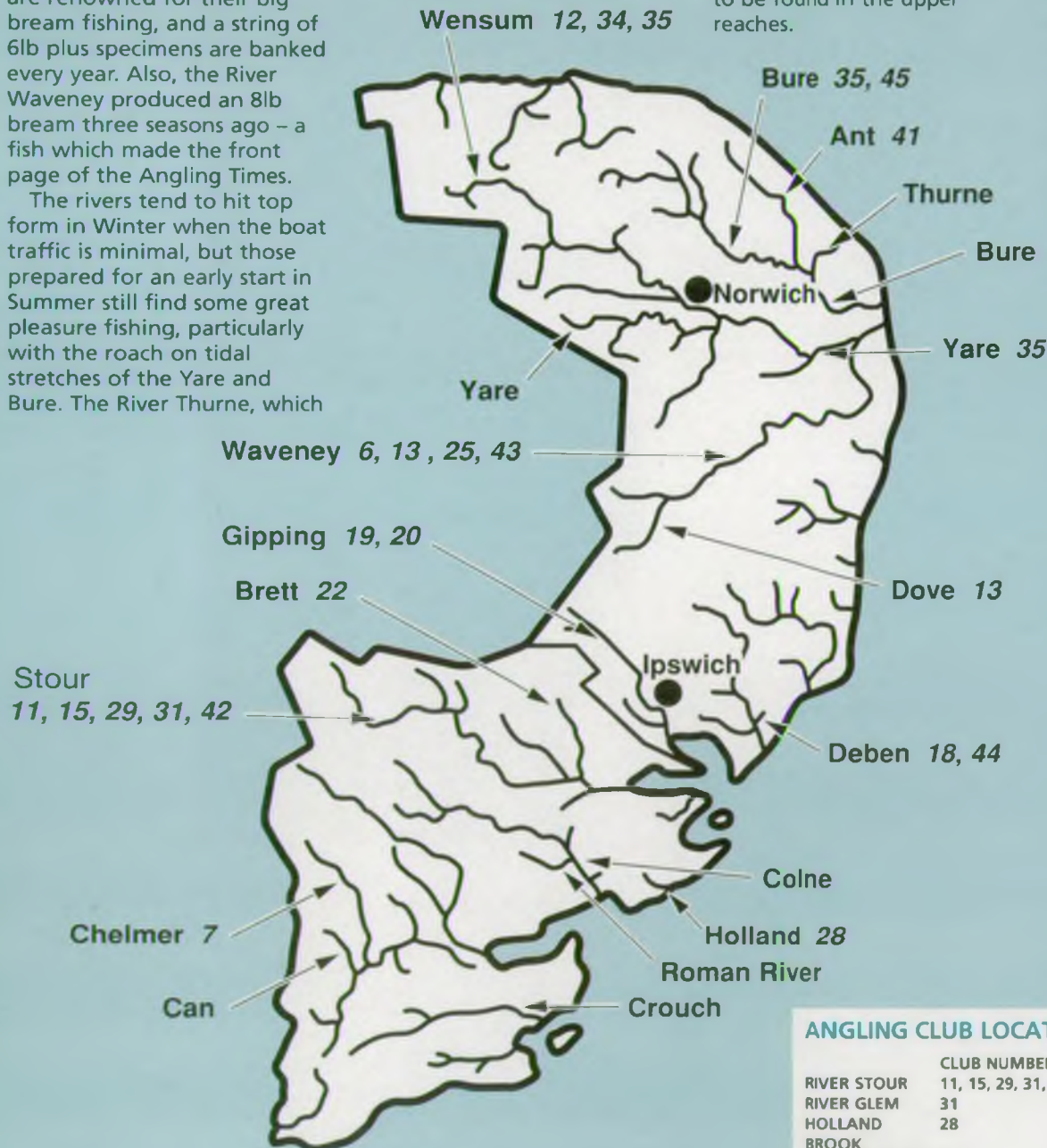
stillwater fisheries characterise angling in the Essex Fisheries District.

The River Stour is the area's major river fishery, and for much of its length forms the Essex-Suffolk boundary. The river is an exceedingly popular fishery noted for roach, bream, chub and dace – even the occasional brown trout is to be found in the upper reaches.

Other river fisheries include the Rivers Brett, Glem, Chelmer and Can, all of which support roach, bream, pike and other coarse fish species.

Stillwater fishing is well represented in the Eastern Area as a whole, with top venues in Norfolk and Suffolk including the Waveney Valley Complex, the 350 acre Alton Water and, of course, the Norfolk Broads which includes the mighty Hickling Broad. In Essex, anglers are spoilt for choice between the various mixed coarse fisheries and specialist fisheries, particularly for carp and trout. Stillwater trout anglers are especially well catered for by the large reservoirs at Ardleigh and Hanningfield, in addition to a range of smaller lake fisheries.

**Locations of Angling Clubs in the Eastern Area – for a key to club location and address, see the numbered guide on the following pages.**



ENVIRONMENT AGENCY

## ANGLING CLUB LOCATIONS IN EASTERN AREA

RIVER	CLUB NUMBERS	RIVER	CLUB NUMBERS
RIVER STOUR	11, 15, 29, 31, 42	RIVER BRETT	22
RIVER GLEM	31	RIVER ANT	41
HOLLAND BROOK	28	RIVER DEBEN	18, 44
RIVER CHELMER/7		RIVER WAVENEY	6, 13, 25, 43
CHELMER AND BLACKWATER CANAL		RIVER BURE	35, 45
		RIVER DOVE	13
		RIVER GIPPING	19, 20
		RIVER WENSUM	12, 34, 35
		RIVER YARE	35

## Eastern Area - Rivers

### RIVER ANT

Free fishing from public staithe at Sutton (50yds). Roach and bream. Free fishing at Ludham Bridge 2.25 miles (Agency owned) left bank upstream and downstream of Ludham Bridge. Roach and bream. Free fishing from the public staithe at Irstead. Roach and bream. Free fishing from the public staithe at Barton Turf. Roach, bream and pike. Stalham boatyards. Roach and bream. Day permits, match bookings and membership of Stalham AC from Mr L Reeves 01493 721011.

### RIVER BURE

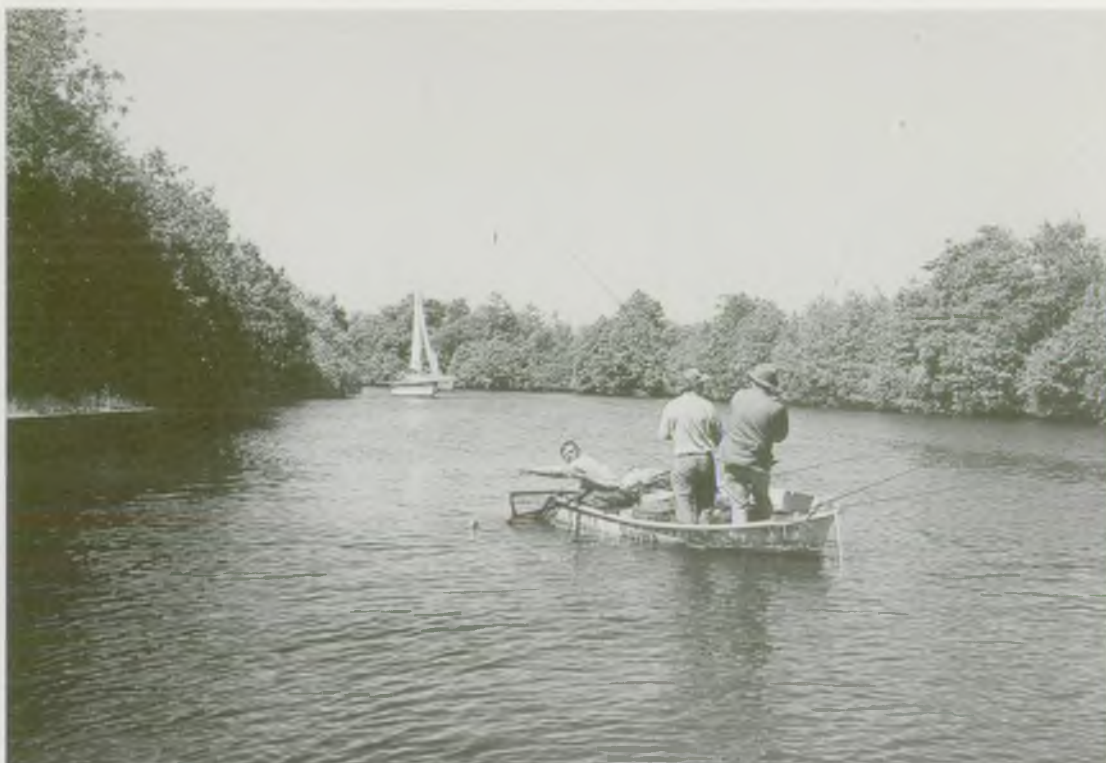
Free fishing at Coltishall Common. Roach and bream. Boat fishing Wroxham area. Roach, bream and pike. Wroxham AC boats from Mr R Westgate 01603 401062 or John Wilson and Tom Boulton's Tackle shops in Norwich. Free fishing on the Woodbastwick bank opposite Horning Ferry PH 0.75 mile on the right bank. Roach, bream and pike. St Benets Abbey bank and boat fishing. The left bank from the Ant mouth downstream is controlled by the Norwich and District AA. Day tickets from Ludham Village Store. Roach, bream and pike. For membership, match bookings etc contact Mr C Wigg 01603 423625. Free fishing at South Walsham and Upton. Agency owned bank, 1 mile of right bank from South Walsham Broad to the confluence with the River Bure then 3.75 miles of the right bank downstream to 800 yards beyond Upton Dyke. Roach, bream and pike.

### RIVER CHET

Free fishing at Loddon Staithe. Roach, bream and pike.

### RIVER DEBEN

Gleaving Bridge to the A12 Wickham Market Bridge on the left bank. Woodbridge and District AC. Roach, bream and pike. Membership and day permits from Rod and Gun Shop, Woodbridge, 0139 4382377. Wickham Market: Downstream of the A12 bridge on the left bank. Roach and



*Boat fishing on the River Bure can be productive.*

bream. Framlingham and District AC. Membership from Saxmundham Angling Centre 01728 603443.

### RIVER GIPPING

Stowmarket, Green Meadow, Bury Road. Roach. Membership of Gipping Valley AC from Bosmere Tackle, Needham Market, 01449 721808. Needham Market, Ravens Farm, Gypsy Lane. Roach, chub and pike. Membership of Gipping Angling Preservation Society from Mr George Alderson, 01473 602828. Needham Market, Station Field and 11 Kings Meadow section, Coddendam Road. Most coarse species. Membership of Gipping Valley AC from Bosmere Tackle, Needham Market, 01449 721808. Pippes Ford area, 1.25 miles upstream of Baylham Mill. Roach, bream, chub and dace. Membership of GAPS as above, 01473 602828. Baylham Mill, downstream to Sharmford Lock. Chub, roach and dace. GAPS members only as above. Sharmford Lock to AW Pumping Station. Bream, chub and pike. GAPS members only as above. Barham Pits downstream of railway bridge. Roach and chub. GAPS members only as above. Bushman's Bridge to Bramford

Lock. Roach and dace. GAPS members only as above. Bramford to Sproughton. Roach, tench and chub. GAPS members only as above. Sproughton Lock to pumping station and on to the Norwich railway line bridge two miles. Roach, chub, carp and pike. Day permits from all tackle shops in Ipswich and Sproughton PO or membership of GAPS as above. Claydon Picnic Site, Station Road, Claydon. Roach, bream and pike. Membership of Gipping Valley AC, Bosmere Tackle, Needham Market, 01449 721808.

### RIVER THURNE

Free fishing, 3.5 miles of left bank. Agency owned from Martham to Repps and 4.5 miles of right bank from Martham to Coldharbour including Candle Dyke and Womack Water. Access via Ferry Road Martham. Potter Heigham and Repps Staithe. No fishing from private bungalow frontages.

### RIVERS WAVENEY AND DOVE

Billingsford and Oakley to Brockdish, 5 miles. Roach, bream, tench and pike. Membership of Diss and District AC from PM Pegg Angling Supplies, 01379 640430.

### RIVER WAVENEY

Needham to Mendham and 1.5 miles downstream from Homersfield Bridge. Roach, chub, dace, bream and pike. Harleston, Wortwell and District AC membership from Mr P Brown, 01379 853505. Earsham, 2.5 miles of Norfolk bank. Roach, tench and chub. Bungay Cherry Tree AC membership from NR Sports, 4a Market Place, Bungay, Suffolk, 01986 894313. Bungay Common 3.5 miles. Chub, dace, roach, bream and pike. Suffolk County AA. Day tickets from NR Sports as above. Wainford Mill to Ellingham Mill, 2 miles. Roach, bream and tench. Bungay Cherry Tree AC membership as above. Ellingham Dairy Farm 1 mile. Roach and bream. Bungay Cherry Tree membership as above. Free fishing at Barsham, Agency owned, 2 miles right bank at Puddingmoor Lane. Beccles Quay. Day permits from the harbourmaster. Roach, bream and pike. Free fishing at Worlingham, 170 yards of right bank at Marsh Lane, Agency owned. Shipmeadow, 1 mile, Suffolk bank. Roach, bream and pike. Bungay Cherry Tree AC. membership from NR Sports, Bungay, 01986 894313.



*The River Wensum is a paradise for pleasure and specimen anglers.*

**RIVER WENSUM**

Worthing, 0.5 mile near Worthing Pits. Chub, dace and pike (see Worthing Pits under stillwaters). Swanton Morley, 2 miles near Swanton Morley Fisheries. Chub, dace, roach and pike (see Swanton Morley under stillwaters). Swanton

Morley, Castle Farm, 1.5 miles. Chub Roach, Dace and Pike. Dereham and District AC membership from Mr S R Allison, 01362 694828. Lyng 0.5 mile near Lyng Pit. Roach and pike (see Lyng Pit under stillwaters). Lyng, 1 mile downstream from the mill.

Roach, barbel, chub, dace and pike. Members of the Norfolk Anglers Conservation Association may obtain guest permits. Further information and membership from Malcolm Hitchins, Woodside House, 5 The Meadows, Aylsham, Norfolk, NR11 6HP. Free fishing at Ringland Bridge 200 yards of the left bank upstream of the bridge and 100 yards of the right bank downstream. Roach, dace, chub and pike. Free fishing 80 yards alongside the Ringland to Costessey Road. Roach, chub, dace and pike. Costessey 0.75 mile near Wensum Fisheries. Chub, dace, roach and pike (see Wensum Fisheries under stillwaters). Free fishing at Drayton Green Lane, 0.5 mile. Roach, chub, bream, dace and pike. Free fishing from Hellesdon Mill Pool to New Mills alongside the public footpath and parks. Roach, chub, bream, carp and pike. Free fishing in Norwich at Fye Bridge Steps, Cow Tower, Bishops Bridge, The Yacht Station and downstream of Foundry Bridge and

downstream of Carrow Bridge. For match bookings telephone 01603 622233. No match fishing between Foundry Bridge and turning basin. Costessey, 600 yards upstream of Costessey Mill. Roach, chub and pike. Norwich and District AA membership from local tackle shops or telephone Mr C Wigg 01603 423625. Sparham Hall, one mile, bream, pike and roach, members of the Norfolk Anglers Conservation Association may obtain guest permits. Further information and membership from Malcolm Hitchins, Woodside House, 5 The Meadows, Aylsham, Norfolk, NR11 6HP. Lenwade Mill, mill pool and 0.25 mile of river. Roach, bream to 10lb, chub to 5lb, barbel to 10lb and pike. Day permits available on the bank. Further information and bookings on 01603 872227. Lenwade, 300 yards approx downstream of A1067 bridge on left hand bank. Barbel, chub, roach, dace and grayling. Day and season permits from the Bridge Inn. Further information on 01603 872248.

**RIVER TIPS**

■ (Right): Bronze maggots are regarded by many anglers as the best colour for fishing on rivers, especially for roach and chub.

■ A little used bait which can be brilliant for chub is steak. Use scissors to cut off a small sliver of stewing steak and fish on large hooks like a size 10.

■ If you are finding bites hard to hit when feeder fishing, try shortening your hooklength. This can be a particularly effective way of connecting with shy baiting fish like roach.

■ When waggler fishing on rivers, always cast at an angle downstream. If you cast in front of you or upstream, a huge bow will appear in the line and it will be impossible to hit bites.

■ Free-lining is a great way to fish rivers. You are presenting the bait very naturally as there is no float or weight on the line and the bait is allowed to trundle along in the current.



**RIVER YARE**

Marlingford, 1.5 miles downstream of Marlingford Mill. Chub, dace, roach and pike. Day permits from Marlingford Mill House. Free fishing at Bawburgh upstream and downstream of the road bridge on the left bank. Dace, roach, chub and pike. Free fishing from Earham Bridge downstream to Cringleford Bridge, two miles of the right and left banks. Roach, dace, chub, bream and pike. Trowse, downstream of church on right bank. Roach, bream and pike. Norwich and District AA membership from local tackle shops or Mr Wigg 01603 423625. Free fishing at Thorpe Green, 0.5 miles of the left bank. Roach, bream, carp and pike. Free fishing at Thorpe, left bank, downstream from railway footbridge near Thunder Lane traffic lights. Roach, bream and pike. Free fishing at Trowse alongside Whitlingham Lane downstream to the sewage works - roach, bream and pike. Free fishing at Bramerton downstream from the Woods End PH for roach, bream and pike. Fishing at Buckenham, Cantley, Rockland, Claxton and Langley. Day and Season permits from Tom Boulton Fishing Tackle, 01603 426834. For match bookings telephone 01603 483923.

**RIVER TIFFEY**

Kimberley Park, one mile downstream of the lake. Roach, chub, dace and pike. For permits and further information telephone 01603 759276.

**RIVER BRETT**

Hadleigh Fishing up river from Toppesfield Bridge, 400m length. Day tickets from Mr B Ward, 72A George Street, Hadleigh. Further information Hadleigh and District Angling Society.

**RIVER STOUR**

Day ticket fishery from Cattawade to Branham lock, right bank and below Flatford Mill pool downstream to Judas Gap. Roach, bream, dace, chub, carp and pike. Further information from Lawford Angling Club.

**RIVER STOUR**

For Flatford Bridge upstream to above Fen bridge on the right bank, day tickets are sold on the bank, by Elm Park, Hornchurch and District AS. Day and season permits are available for Dedham mill pool from Mr A Clover, Tel 01206 323148. Fishing here is for roach, dace, chub, bream and pike. Henny Street. Short section downstream from Henny footbridge on the left bank. Roach, dace, chub, pike, perch and bream. Further

information and day tickets (in advance) from Cornards Angling Club. The River around Sudbury provides a wealth of fishing for bream, tench, roach, chub, dace and carp:

Pecks Meadow 570 yds on the left bank. 40 pegs. Sudbury, Island backwaters. 100 yds on left bank Sudbury, Mill Meadows, 830 yds upstream of the boundary weir pool. Sudbury, Borley Mill 600 yds upstream of Borley Mill on the right bank.

Day tickets and further information from Sudbury and District Angling Association. Rodbridge, Long Melford. Up and downstream of the road bridge. Chub, roach, dace, tench, pike and carp. Day tickets in advance from Long Melford and District Angling Association. Rodbridge picnic area. Chub, roach, bream and pike. Suffolk County Council free public fishing. Long Melford and DAA also control fisheries at Liston Black Barn, Foxearth Road, right (Essex) bank; Liston Mill (up and downstream including the mill pool and down to the road bridge); Liston Hill, near Bush Boake Allen's factory on the right (Essex) bank; Dudds Bridge, fishing both sides of the old railway bridge on the right (Essex) bank.

Glemsford Station. Half mile of

fishing from the roadbridge near the old railway station, going upstream. New Bridge. Along the disused railway track from Starfield pits, fishing available on both sides of the old bridge. Near Martins Nest Bridge. Both sides of River Glem confluence. Clare Fishery. From the footbridge below Clare Priory on the right (Essex) bank downstream for 2 miles to the second disused railway bridge. Fish species include roach, bream, dace, chub, barbel and pike.

**RIVER GLEM**

Martins Nest Bridge. Up and downstream of the A1092 road bridge. Chub, dace, roach and pike. Day tickets in advance from Long Melford and District Angling Association.

**HOLLAND BROOK**

Great Clacton. Fishing from Pickers Ditch to above Fan Bridge on the right bank. Carp, rudd, roach and perch. Lakeview Angling Club weekly permits only, in advance. Further information and permits from Brian Dean Tackle, 43 Pallister Road, Clacton, 01255 425992.

**RIVER CHELMER/ CHELMER AND BLACKWATER CANAL**

You can catch roach, rudd, tench, carp, bream and possible dace and chub at: Browns Wharf to Cuton Lock. Three miles of fishing along the tow path side of the river. Stonehams Lock to Ricketts Mill, 6 miles of fishing on the tow path bank. Beeleigh Lock to Heybridge Basin. Two and a half miles of fishing on the tow path side. Chelmsford Angling Association day tickets on the bank.

**RIVER CHELMER**

Broomfield to A12. Day tickets on bank.

**RIVER CAN**

Admirals Park to River Chelmer. Day tickets on bank. Further information phone 01245 257032



*Quivertip fishing for bream on the River Yare.*

**Eastern Area – Day Ticket Trout Fisheries**

**ABBOTS HALL**

River Bure at Ingworth near Aylsham, one mile, both banks, downstream from Ingworth bridge. Brown trout. Day permits only to members of the Salmon and Trout Association. Permits and information from Mr Ken Harrowven 01263 733471.

**ARDLEIGH RESERVOIR**

Ardleigh, near Colchester, 130 acres. Brown and rainbow trout. Bank and boat fishing, 23 boats available. Open from first Saturday in March to end of September for flyfishing only. Any legal method of fishing for trout (and coarse fish) during October. Public day ticket water. Mr Barry Bartholomew, Fisheries Manager, Ardleigh Reservoir, Colchester, 01206 230642.

**BINTREE MILL**

River Wensum near Grist. Two miles downstream from mill. Brown Trout. Season and day permits available only to STA members. Telephone 0132 878217.

**BURE VALLEY LAKES**

Near Aylsham, 12 acres, two lakes. Rainbow and brown trout. Day permits and further information on 01263 587666.

**CHIGBORO' FISHERIES**

Heybridge, Maldon. 2 lakes with over 16 acres of brown and rainbow trout fishing. Average rainbow about 2.5 lb. Bank and boat fishing, flies and tackle hire and tuition. Day and season tickets available. Licensed fishing lodge for snacks and table meals. Disabled facilities. Chigboro' Fisheries, Chigboro' Road, Heybridge, Maldon, 01621 857368.

**EAST TUDDENHAM TWIN LAKES**

Near Norwich, seven acres. Brown and rainbow trout. Day permits from most tackle dealers or East Tuddenham PO. Season permits and further information from Norfolk and Suffolk Flyfishing Club, Tel 01692 402162.

**FAKENHAM ANGLING CLUB**

River Wensum, two miles upstream of Fakenham Mill. Day permits and club

membership from Dave's Tackle, Fakenham, Tel 01328 862543.

**HANNINGFIELD RESERVOIR**

East Hanningfield, 600 acres. Rainbow trout. Bank and boat fishing, 2 invalid boats. Day and 55 season permits available from the fishing lodge. Mr B Joslin, Fishery Officer, Essex and Suffolk Water Company, East Hanningfield, 01268 710101.

**LAKESIDE LEISURE PARK**

Carlton near Saxmundham, three acres, brown and rainbow trout. Permits and information. Tel 01728 603344.

**LENWADE TROUT FISHERY**

Nine acres, brown and rainbow trout. Season permits only available to STA members. Tel 01508 538115.

**MENDHAM MILL TROUT FISHERY**

Two small lakes, brown and rainbow trout. Permits and information on 01379 852328.

**ROOSTING HILLS**

Beetley near Dereham. Six acres. Rainbow trout. Day permits only to STA members. Tel 01362 860633.

**STAMBRIDGE STARR FISHERY**

Stambridge. 1 acre. Rainbow trout fishery. Day tickets available on site. Stambridge Starr Fishery, Stambridge Road, Stambridge, Tel 01702 258274.

**SWANSCOMBE FARM**

Earls Colne. 4.5 acres. Brown and rainbow trout. Day and season permits available. Mr K Gash, Swanscombe Farm, Earls Colne, Tel 01787 223562.

**WILLOW LAKES TROUT FISHERY**

Chediston near Halesworth. 2.5 acres and 1.5 acres. Brown trout and rainbow trout. Season and day permits and info on 01986 85392.

**WHINBURGH TROUT LAKE**

Near Dereham. Four acres. Rainbow and brown trout. Season and day permits and catch and release available. Open all year. Tel 01362 850201.



*The lodge at productive Hanningfield Reservoir.*



**Eastern Area – Stillwaters**

D = suitable for disabled anglers

**Aldeby Hall Farm Pits, near Beccles**

Four small pits which cover 3.5 acres. Carp, tench and roach. Day tickets from the bailiff on the bankside. For information telephone 01502 677648.

**Alderson Lake, Needham Market (8 acres)**

Tench to 6 lb, roach to 1 lb, 8 oz and pile to over 20 lb. Gipping Angling Preservation Society membership from Mr George Alderson on 01473 602828.

**Alton Water Reservoir, Ipswich (350 acres)**

350 numbered pegs for matches. Bream to 8 lb, roach, tench and pike over 20 lb. Day tickets in advance from most local tackle shops or the tackle shop on site. Season permits available and further information and match booking from the warden's office, telephone 01473 327398.

**Barham A Pit, Claydon (4 acres)**

Carp over 20 lb. Day tickets from Breakaway Tackle, telephone 01473 741393

**Barham B Pit, Claydon (20 acres)**

Carp over 20 lb, bream to 9 lb, tench to 9 lb and roach to 2lb 8 oz. GAPS members only, see Alderson Lake.

**Barford Fisheries, Barford (Three lakes, 1.5 acres, 0.5 acres, and 2.5 acres)**

Most coarse species. The small lakes are heavily stocked with carp to 3 lb for match fishing. Day tickets available in advance from the house. For further information and match bookings call 01603 759624.

**Bartles Lodge, Elsing (1 acre)**

Carp to 12 lb, roach, rudd and tench. Day permits from the house. Tel 01362 637177.

**Bridge Inn Fishery, Lenwade (5 acres)**



*Barford Fisheries is well stocked with carp.*

Carp to 16lb, tench to 7 lb, bream roach, perch and pike. Day and season permits from the Bridge Inn. For further information call 01603 872248.

**Barton Broad**

One hundred and fifty acres holding bream to 11 lb, roach and pike. Boat fishing only. Rowing boats for hire from Barton Lodge Hotel, telephone Bill on 01692 630644.

**Bawburgh Lake**

Five lakes to 25 acres with roach, bream, carp and pike to 25 lb. Day permits from all local tackle shops. Season permits for NACA Members only. See Sparham Pools.

**Beccles Rod and Gun Club Fishery (1.5 acres)**

Holds most coarse species. Day permits June 16 to October 30 from Terry Squires, Beccles. Tel: 01502 713629.

**Blickling Lake, Aylsham (20 acres)**

Bream to 10 lb, carp to 20 lb, tench, roach, perch and pike over 20 lb. Day tickets issued on the bank. Further information from Mr W Cooper. Tel 01263 734181.

**Booton Clay Pit, (4 acres)**

Carp to 30 lb, tench, bream and roach. Day tickets from the bailiff on the bankside.

**Bosmere, Needham Market (5 acres)**

Bream, roach, tench, perch and pike. GAPS Members only. (See Alderson Lakes)

**Bridge Farm, Wickham Market, (2 acres, two pits)**

Tench, roach, bream and pike. Framlingham A membership from Saxmundham Angling Centre. Tel: 01473 603443

**Brooke Pit (2 acres)**

Tench, roach and perch. Day permits from the bailiff on the bankside.

**Broome Pits (25 acres, four pits)**

Roach, tench, bream and carp. Day tickets from the bailiff on the bankside. Match bookings from Eddie Brooks on 01986 894711. Further information from Mr I Gosling, telephone 01986 892982.

**Bure Valley Lakes, Itteringham (2 acres)**

Carp over 20lb, roach, perch and tench. Day permits booked in advance from Mr M Smith on 01263 587666.

**Buss Creek Southwold**

A mile long and about 10 yards wide. Bream, tench, roach and perch. Day tickets in advance from Purdy's Newsagents, Southwold, tel: 01502 724250.

**STILLWATER TIPS**

■ (Right): Use a float adaptor to attach your waggler float to the main line so you can quickly alter your set-up should conditions change.

■ When choosing a swim, look for obvious fish-holding features like reeds and lilies.

■ When the water is cold, start your session by fishing a bait on the bottom as this is where the warmer water and fish are likely to be.

■ Look for the direction of the wind as fish are often found near to the bank where the natural food has blown in.



**Cantley Sugar Factory (2 acres)**

Bream, tench and roach.  
Season permit from Mr J Conlin on 01493 700351.

**Causeway Lake, Great Blackenham (7 acres)**

Bream to 6 lb, roach to 2 lb 8 oz, perch to 3 lb 8 oz and pike over 20 lb. GAPS members only. (see Alderson Lake).

**Costessey Pits (12 and 6 acres)**

Carp over 30 lb, bream, tench, roach and pike. No night fishing. Day and season tickets in advance from most tackle shops or from Anglian Water PLC.

**Chapel Road Lake, Roughton (1.5 acres)**

Well stocked with carp to over 15 lb, tench, roach and perch. Day permits issued on the bank. For further information call 01263 761369.

**Cobbleacres Lakes, Hevingham (3.5 acres and 1.5 acres)**

Well stocked lakes with carp to



*Beautiful Bure Valley at Itteringham.*

20 lb and most coarse species. Day and season permits available on the bank. For further information tel: 01603 754305.

**Decoy Broad, Woodbastwick (30 acres)**

Bream, roach and pike. Boat fishing, Norwich and District

AA members only. Telephone Mr C Wigg on 01603 423625,

**Decoy Farm (Ormesby St Michael (2 acres)**

Tench to 6 lb and well stocked with most other coarse species. Day tickets from the farm office. Match bookings up to 40 pegs. Telephone Mr Lanham on 01493 731294.

**Diss Mere (4 acres)**

Carp over 10 lb, roach, tench and crucian carp. Diss AC membership from PM Pegg Angling Supplies, Diss. Telephone 01379 640430.

**Ditchingham Pitt, (3 acres)**

Carp to 20 lb, bream, roach and tench. Bungay Cherry Tree



**British Waterways**

**CLATTERCOTE AND DRAYTON RESERVOIRS**

*Have you fished the two premier stillwaters in the East Midlands?*

Call now for your free information pack on:

**01442 278717**

For 24 hour information

**Tel: 0113 281 6895**

**"BEST TENCH IN NORFOLK"  
PROLIFIC 20 ACRE FISHERY**

*Plus Carp to 25lb with very few single figure fish.  
BREATHTAKING LOCATION*

"Take advantage of top quality self-catering accomodation on the banks of the beautiful River Wensum and enjoy some of the Best Big Barbel fishing in the country"

**NEW 97 BROCHURE NOW AVAILABLE**  
*97 Bookings now being taken*

**TAVERHAM MILLS FISHERY  
NORWICH 01603 861014**

**SYCAMORE FISHING LAKES**

Day ticket water  
Open Easter 'til November  
**NEW WOODLAND LAKE NOW OPEN - IDEAL FOR POLE & MATCH FISHING**  
Lakeside cafe & Tackle Shop  
Holiday Cottages  
S.A.E. for brochure: Skegness Road (A158) Burgh-Le-Marsh, near Skegness, Lincs PE24 5LN  
**Tel: 01754 811411**

**G. HARRISON & SON**

**Shimano Tightline Services**

Comprehensive range of Rods & Reels for Coarse, Game & Sea Anglers  
**MAIL ORDER AVAILABLE**

**TEL: 01522 523834**

**55 CROFT STREET  
LINCOLN**



*A fish is slid to the net at Diss Mere.*

members only. Telephone Mr I Gosling on 01986 892982.

**Dunham Carp and Tench Lakes, near Necton (4 acres)**

Carp to over 20 lb, tench, roach and rudd. Day and season permits available on the bank. For match bookings (60 pegs) and further information telephone: 01760 725286.

**Felbrigg Hall Lake, near Cromer (4 acres)**

Tench, rudd to 3 lb. Day tickets in advance and further information from Tatters Tackle. North Walsham. Tel: 01692 403162 or Molt Tackle and Bait on 01263 712855.

**Felmingham Mill Lakes, near Aylsham, (3 acres, three lakes)**

Also 1,000 metres of river. Carp to 15 lb roach, perch, rudd, tench and bream. Day permits issued onsite from Mr Moore, tel: 01263 735106.

**Felthorpe Lake near Norwich (two pools to 2 3/4 acres)**

Carp averaging 11 lb, crucians, grass carp, tench, perch, roach, rudd and bream. Tickets from Pond House near fishery entrance. 01603 754408.



*A fine net taken from Diss Mere.*

**Flixton Decoy, Year Lowestoft (15 acres)**

Rudd, bream, tench and perch. Boat fishing only. From June 16 to September 30. Bookings in advance from Mr E Green, tel 01502 730568.

**Fritton Lake near Great Yarmouth (175 acres)**

Bream, roach, tench and pike. Admission tickets issued at the main gates. Boats available. Tel 01493 488288.

**Gimingham Lakes, near Cromer, (3 lakes of 7 acres total)**

Carp to over 20 lb tench, roach, rudd and crucians and bream. Day permits issued on the bank. For further information call 01263 720432.

**Greens Pits, Burgh Castle**

Two small pits. Most coarse species. Day tickets available from the bailiff on the bank.

**Gunthorpe Hall Lake, Melton Constable (3 acres)**

Carp, tench and roach. Day tickets from Mr D S Munson, tel: 01263 861373

**Gunton Park Lake near Aylsham (16 acres)**



*A specimen approach pays dividends at Shallow Brook.*

Bream and roach. Day tickets available from the bailiff on the bank. For match bookings, tel 01263 768284.

**Hardley Marshes, Loddon (50 acres)**

Roach, bream and pike. Day tickets June 16 to August 31 from Mr Nichols, 16 The Market Place, Loddon.

**Henham Dairy Pond, (1 acre)**

Carp to 10 lb, crucian carp, roach, tench and rudd. Day

tickets in advance. Tel 01502 578762.

**Hevingham Lakes**

Three small lakes, well stocked with carp to over 20 lb, tench, roach and rudd. Day tickets from Mr Mathewson at the bungalow. For further details telephone (01603) 754368.

**Hickling Broad an Heigham Sound (700 acres)**

Bream to 7 lb, roach and pike to 30 lb. Boat fishing only.

Boats available from Whispering Reeds Boatyard. Telephone 01692 598314.

**Highfield Fisheries, Thorpe Abbot (2 lakes to 2 1/4 acres)**

Carp averaging 10 lb, tench and bream averaging 3 lb. Tickets issued on the bank, tel: 01986 874869.

**Holton Pit, Halesworth, 2 acres)**

Well stocked with carp to 17 lb, bream and rudd. Day tickets season permits and further information from Anglia Photographics and Sports, Halesworth or Rod and Gun Shop, Woodbridge, 01394 382377.

**Holkham Lake, near Wells-Next-The-Sea (35 acres)**

Most coarse species. Day and season permits, June 16 to August 31, from the estate office. For further details telephone 01328 710227

**Lakeside Fisheries, East Bilney, near Dereham (three lakes**

**to 2.5 acres)**

Well stocked with carp to 20 lb, roach, perch and tench. For match bookings and further information 01362 861015.

**Lenwade Common Lakes (Charity Lakes)**

Three pits upto five acres. Most coarse species. Car parking near swims. Day tickets available from the bailiff on the bank. Further details telephone Mrs Wright on 01603 872286.

**Letheringsett Fishery, near Holt (3 acres)**

Carp, roach, tench and perch. Day tickets available from the King's Head, Letheringsett, Monday to Friday. Match bookings for 20 anglers from the secretary of Sheringham and District AC, Mrs Francis. Tel 01263 588323.

**Loam Pond, Sutton, near Woodbridge (2 acres)**

Bream to 7 lb carp to 10 lb, roach and perch. Season and day tickets from Rod and Gun Shop, Woodbridge. Tel 01394 382377.

**STILLWATER TIPS**

■ (Right): A pair of forceps are always worth carrying to remove large hooks from big fish like carp, tench and pike.

■ Always plumb the depth before fishing. Look for underwater features like deep holes or ledges which usually hold the bigger specimens.

■ When feeder fishing lakes, look for a marker on the far bank to aim your cast at. The more accurate your feed goes in, the more fish you will catch – remember scattered feed means scattered fish.



## STILLWATERS

### Lyng Pit (4 acres)

Roach, tench, bream and carp. Day permit in advance from the local tackle shops or secretary of Dereham and District AC, Mr S R Allison. Tel 01362 694828.

### Marsh Farm, Sternfield, near Saxmundham (two lakes to 2 acres)

Carp to 20 lb, roach rudd, tench and bream. Day permits from the farm shop. Tel 01728 602168.

### Martham Pits

Small reed fringed interconnected pond. Tench, rudd, bream and carp. Day tickets in advance from Molly's Sweet Shop. Martham Green. Tel 01493 740366.

### Meadow Lake, Narborough (1 acre)

Carp to 15 lb plus tench, bream, chub, roach and dace. Day and evening permits from the shop. For more information telephone: 01760 338005.

### Melton Lake (2 acres)

Roach, rudd and carp. Day tickets in advance from Breakaway Tackle, Ipswich., Tel: 01473 741394 and Woodbridge Rod and Gun Shop. Tel 01394 382377.

### Needham Lake (7 acres)

Roach, perch, tench and bream. Membership of Gipping Valley AC from Bosmere Tackle, Needham Market Tel: 01449 721808.

### Ormesby Rollesby and Filby Broads (800 acres)

Bream to 10 lb, roach, pike to 30 lb, tench and perch. Boats for hire from Mr Barnes on 01493 368142 ; Ees Foot Hotel on 01493 731441 and Mr Greenwood on 01493 748724.

### Oulton Broad (100 acres)

Bream, roach, perch and mullet. Free fishing from the bank at Nicholas Everitt Park. Boats for hire from Knights Creek, tel 01502 572599 or 01502 566559.

### Parham Pits, near Framlingham (1 acre)

Most coarse species. Saxmundham SAC membership from Saxmundham Angling Centre. Tel 01728 603443.

### Pettistree Lakes, near Wickham Market (1 acre)

Carp to over 10 lb and rudd. Framlingham and District AC membership from Saxmundham Angling Centre. Tel 01728 603443.

### Railway Lake North Elmham (1 acre)

Crucian carp, bream and roach and perch. Members of Fakenham AC only. Tel Dave's Tackle Shop Fakenham on 01328 862543.

### Ranworth Broad (100 acres)

Bream, roach and pike to 30 lb. Norwich and District AA members only. Tel Mr C Wigg on 01603 423625.

### Rectory Farm Fishery, Hingham (1 acre)

Carp to 18 lb, crucians and roach. Day permits available on site. No keepnets allowed. For further information telephone Mr Semmence on 01953 850308.

### Reepham Fisheries (3 acres)

Well stocked with carp to 20 lb, rudd and tench. Day permits in advance from the office. Contact Mr Daws on 01603 870829.

### Reydon Number One (3 acres)

20 lb carp, 5 lb tench, roach and rudd. Day tickets in advance from Purdy's Newsagents, Southwold. Tel 01502 724250.

### Reydon Number Four (2 acres)

10 lb carp. Day permits from Purdy's Newsagents, Southwold. Tel 01502 724250 and local tackle shops.

### Ringland Lakes (7 lakes up to 3 acres)

Roach, bream, tench and pike to 20 lb plus carp to 30 lb plus. Day tickets from all local tackle shops (season permits available for NACA members) (see Sparham Pools)

### Rockland Broad (50 acres)

Roach, bream and pike. Boat fishing only. Row boats for hire from Mr Dye, Les Fours, 2 Lower Road, Rockland St Mary. Tel 01508 825655.

### Salthouse Broad (20 acres)

Roach, bream and pike over 20 lb. Boat fishing and some bank fishing. Permits issued by the bailiff when he calls round. Boats can be booked from Wroxham AC secretary, Mr Bob Westgate on 01603 401062 or from John Wilson's or Tom Boulton's tackle shops in Norwich.

### Scoulton Mere near Hingham (6 acres)

Tench to 6 lb, bream, roach, rudd, perch and pike to 20 lb. Day permits from the bailiff on the bank. For midweek match bookings and further information call 01603 811003.

### Felbrigg Lake, near Holt (4 acres)

Roach, tench, perch and pike. Day permits in advance from Mr Wright's farm near the lake. Tel 01263 712366.

## STILLWATER TIPS

■ (Right): If all else fails, try chopped worm. Using a sharp pair of scissors, chop up five or so worms into either your groundbait or pole cup and drop into your swim. Fish a section of worm directly over the top for perch, carp, bream and tench.

■ Put your groundbait through a riddle to sieve out the lumps. A fine mix will attract the fish without filling them up.

■ When small fish are the target, use a whip to catch them at speed.



## ALDERBY HALL

**Alderby, Nr Beccles, Suffolk**  
Beautiful, secluded, country fishing, half mile from minor road and 100 yards from River Waveney  
Ideal for families, toilet and washing facilities. Day tickets £4, concessions £2 from 8 00am - 8 00pm. Night fishing permitted. Caravan site 2 miles. Access by car or boat, 24 hours free mooring.  
**Tel: 01502 677648**

## BROADLAND ANGLING & PET CENTRE

- Quality Fishing Tackle • Fresh Water & Sea Baits
  - Pets, Pet Food & Accessories
- HIGH STREET, STALHAM,  
NORFOLK NR12 9AN  
Tel: Fax: 01692 580959

Also open Sunday mornings Mid-June - October

## BURE VALLEY LAKES

ALTON, ALYSHAM,  
NORFOLK  
COARSE & TROUT FISHING  
TELEPHONE:  
**01263 587666**

## NORFOLK BROADS

House boats moored on River Ant, available with row boat, plus outboard or day launches to fish other waters.  
**For colour brochure tel: 01692 650491**

Pets Welcome

## MARK FORD ROD BUILDERS

Fine Quality Split Cane Carbon Rods, Blanks & Kits  
Loch Style and Travel Rods distance caster, brook rods.  
All custom finished.  
SEE MAIN AD OR PHONE:  
**01502 717256 FREE BROCHURE**

## RIVER THURNE HOUSEBOATS

Cruisers and launches for hire, based at Martham.  
Reasonable prices  
For Colour Brochure  
**Tel: 01493 740249**

## RUDLINGS DIY

Extensive range of fishing tackle and baits including Daiwa, Silstar, Drennan, Mitchell and more.  
Open 6 days a week. Mon-Sat and now open Sunday 9am - 1pm  
**01953 881760**  
28 HIGH STREET, WATTON,  
NORFOLK

## Saxmundham Angling Centre

Quality tackle & baits for Sea, Game and Coarse Fishing.  
Local club permits and memberships  
**Rear of Market Place Saxmundham**  
**Tel: 01728 603443**



*Taverham Mills – twenty acres of action-packed sport.*

**Shallow Brook Lakes, Costesey (2 acres and 1 acre)**

Carp, roach, perch and tench. Day permits in advance from the farm shop. Further information telephone Mr Green on 01603 742822 or 01603 741123.

**Shorthorn Plantation Lake Hevingham (1 acre)**

Carp averaging 4 lb, plus roach, rudd and tench. Day tickets issued on bank, Tel: 01508 570429.

**Shropham Pit (4 acres)**

Bream to 7 lb, tench, roach, carp and pile. Wymondham and District AC members only. Contact secretary Mr T Binks on 01603 405341.

**Snetterton Pits (Five pits up to 12 acres)**

Carp to 10 lb, tench to 4 lb, roach and pike. Day permits, season permits and match bookings available at the fishery or telephone (01842 764312 or 0195 382289.

**Sibton Lake, near Halesworth (3 acres)**

Carp to over 10 lb bream, rudd and tench. Saxmundham SAC membership from Saxmundham Angling Centre, Tel 01728 603443.

**Snape Water, near Saxmundham (2 acres)**

Well stocked with carp to 15 lb and rudd. No night fishing. Day permits from the Rod and Gun shop, Woodbridge. Tel 01394 38237.

**Swale Pit, Ipswich (4 acres)**

Carp and bream. British Telecom club water. Day ticket from Woodbridge Rod and Gun Shop, Tel 01394 382377.

**South Walsham Bor (50 acres)**

Bream, roach and pike. Boat fishing in the outer broad or bank fishing from the parish staithe (approx 10 yards). Dinghys for hire from R and J Russell Boatyard, Fleet Lane, South Walsham. Tel 01603 270262.

**Sparham Pools, Lyng (20 acres)**

Tench, roach and pike. Only five permits issued each day to members of the Norfolk Anglers Conservation Association. Further information and membership from Mr M Hitchens, Woodside House, 5 The Meadows, Aylsham, Norfolk NR11 6HP

**Stonegate Lake, near Aysham (3 acres)**

Most coarse species. Annual membership of Great Yarmouth and Norfolk Course AA from Tom Boulton Fishing Tackle, Norwich Tel: 01603 426834.

**Swangey Lakes, near Attleborough (4.5 acres and 1.5 acres)**

Carp to 20 lb, crucian carp, tench, roach and perch. Day tickets available from the bailiff on the bank. For further information telephone Minn Aggregates (Carbrooke) Limited on 01953 452907.

**Swanton Morley Fisheries (30 acres)**

Four lakes, Tench, bream, roach and pike. Day tickets advance from Churchills of Dereham on 01362 696926.

**Tannery Lake, Worthing (0.5 acre)**

Tench, roach, perch, plus odd pike and rudd. (Access to 150yd stretch of River Blackwater). Tickets from the house on site. Tel 01362 668202.

**Taswood Lakes (5 lakes up to 3 acres)**

Carp to 20 lb and most coarse species. Day tickets from Brenda and David Edwards at the bungalow. For further information tel: 01508 470919.

**Taverham Mills Lake (20 acres)**

This prolific and very scenic water hold a number of species including tench to 7 lb, carp to 20 lb, roach, bream and pike. Day, part day and week permits from the warden at the lodge. Bookings for self catering accommodation from Anglian Water Tourist Information Centre. Tel 01780 460321.

## Thompson Water near Watton (34 acres)

Tench, roach, bream and carp. Day permits from bailiff who calls on the bank.

## University Broad, Norwich (18 acres)

Bream to 8 lb, roach, tench, carp to 20 lb, perch to 2 lb and pike over 20 lb. Season permits only. Tel: Mr Ron Ashby on 01603 56161.

## Utopia Paradise Lake, Lyng (4 acres)

Tench averaging 3 lb 8oz, bream crucians, roach, rudd and perch. Odd carp and big pike. Day tickets on bank. Tel 01603 870812

## Waveney Valley Lakes, Wortwell (Several lakes up to 5 acres)

Carp over 30 lb, bream, roach and tench. Day tickets available from the shop. For further details and hiring caravans on site call Mr Knox on 01986 788676,

## Wensum Fisheries, Costessey (Four lakes up to 10 acres)

Tench to 7 lb, bream to 9 lb, roach and carp. Season permits can be obtained by members of the Norwich and District AA. Telephone Mr C Wigg on 01603 423625.

## Weybread Fishery (2 1/2 acres)

Mixed fishery with specimen chub, crucians and roach. Carp into double figures, plus large perch. Day tickets on bank, tel 01379 588141.

## Weybread Pits, Harleston (5 pits up to

## approx 100 acres)

Most coarse species, day tickets from local tackle shops including Waveney Angling, Harleston and District membership call Mr P Brown on 01379 853505. For match bookings contact Nigel Poll on 01379 853571.

## Willsmore Water, Fakenham (1.25 acres)

Carp to 10 lb., roach, perch and tench. Fakenham Angling Club members only. Telephone Dave's Tackle Shop, Fakenham on 01328 862543.

## Wolterton Park Lake, near Aylsham (10 acres)

Tench over 7 lb. Day permits available from the head gardener's lodge.

## Woodrishing Water Meadows, near Hingham (1 acre)

This water boasts carp, roach and tench. Day tickets in advance from Mr Bunning on 01362 820702.

## Worthing Gravel Pit (8 acres)

Bream to 10 lb, roach and pike. Day permits in advance from local tackle shops. Dereham and District AC membership from Mr D Appleby 01362 637591.

## Wroxham Broad (100 acres)

Roach, bream and pike at this water. Boat fishing only. Boats can be booked from Wroxham A secretary Mr Bob Westgate, tel 01603 401062 or John Wilson's tackle shops in Norwich

## Abberton Reservoir, Layer-de-la-Haye, Colchester

Fishing from causeways on the Layer Breton and Layer-de-la-Haye roads. Roach, pike and bream. 30 permits in any day, permits available from the Post Office, Layer-de-le-Haye and the Fishing Lodge, Hanningfield Reservoir, East Hanningfield. Further information from Mr B Joslin, Fishery Officer, Essex and Suffolk Water, East Hanningfield, 01268 710101.

## Alton Water, near Ipswich

350 acres, bream, roach, tench, perch, eels and pike. Bream 8lb plus and pike up to 30 lbs. 250 pegs plus pleasure pegs. All day permits must be obtained before starting fishing. Day permits are available locally and from most tackle shops within a 30 mile radius of Alton Water. Season tickets are available from the Warden. Further information from the Warden, Mr C Flack, 01473 327398.

## Ardleigh Reservoir, near Colchester

130 acres. Roach, bream and tench, perch and pike. Large pike caught 44 lbs 3 oz. Open from 16 June on certain sections, whole reservoir open from 1 October to the end of February. Ardleigh Reservoir, 01206 230642.

## Arena Essex Purfleet

20 acres. Roach, carp and pike. Day and season tickets sold on the bank. Mr A Woodroffe,, 01708 867728.

## Arrans Fishery, Highwood

2.5 acres lake. Carp, tench and roach. Day tickets sold on the bank. Mr A Smith, Entire Farm, Highwood, Chelmsford, 01277 352404.

## Beads Hall Lakes, Pilgrims Hatch

Carp, tench, roach, rudd and perch. Day tickets on site, match and club bookings from Basildon Angling Centre.

## Bentons Pits, Mollands Lane, South Ockendon

Carp, pike, roach and bream.

**HEARTS CRUISERS**

**NORFOLK BROADS**

Save pounds on 2/10 berth cruisers. Weekly hire, weekends and part weeks. All fully equipped.

*Brochure and special discount prices available*

**Telephone: 01692 582277**

**OULTON BROAD**

Why not have a week's fishing on the Norfolk Broads?

6 berth caravans, tents. Tourers welcome. Site on edge of Broad. Adjacent boat hire available.

Apply  
**Broadview Caravans**  
Oulton Broad

**Tel: 01502 565587**

**FABULOUS FUN FISHING FILBY**

Stay at Broad Farm Caravan Park beside Filby Broad

Clean accommodation at reasonable prices

Rowing boats - Bar - Restaurant - Entertainment - Shop - Pool - Sports Club

Brochure: Sunnyside Caravans

**Tel: 01493 369265**

**WALDERGRAVES HOLIDAY PARK**

Mersea Island Essex

**Tel: 01206 382898**

Coarse fishing from three well stocked lakes. Restaurant open for breakfast and lunch.

Heated swimming pool

*Holiday homes for hire and touring park.*

**SILVER BIRCHES HOLIDAYS**

NORFOLK BROADS

*"Escape from the World"*

to this peaceful retreat and fish directly from your house boat.

Free rowing boats.

Children & Pets welcome.

*Day lunches available.*

**Tel: 01692 630858**

**UTOPIA PARADISE LYNG**

Coarse Fishing Lake. Self Catering Cottage & Lakeside Caravan Club C.L. The grounds span about 7 acres comprising grass land with naturally attractive 4 acre fishing lake. The comfortable cottage sleeps 5+ cot.

Pets welcome

*For free brochure and further information*

**Tel: 01603 870812**

**SAM HOOK SPORTS**

**CUSTOM ROD BUILDING SERVICE**

Stockists for all leading manufacturers Daiwa, Shimano, Abu, Ryobi etc. Fresh baits daily

**131/132 Bevan Street, Lowestoft N32 2AQ**

**Telephone (01502) 565821**

**NORWICH ANGLING CENTRE**

476, SPROWSTON ROAD  
NORWICH NR3 4DY

Mail Order Available  
for details

**TEL: 01603 400757**

### STILLWATER TIPS

■ (Right): Try floating maggots for surface feeding fish. You can make them float by covering them in water in a bait box for 15 minutes.

■ Don't strike too hard when targeting big fish, you'll lose more than you'll land. Simply lift the rod gently but firmly and ease into the fish.

■ Always sit with your hand on your rod, so you're ready to strike when you get a bite. It will also help to keep your quivertip steady on windy days.



Day tickets on the bank. Mr T Coster, 0181 59065387.

### **Blasford Hill Lakes, Thorleys Farm, Little Waltham, Chelmsford**

1 lake plus 1/2 mile river. Carp, tench, roach, rudd. Tickets from Edwards Tackle Shop, Chelmsford, 01245 357689.

### **Brickhouse Farm Fisheries, Doddinghurst Road, Brentwood**

Two small mixed coarse lakes, one (fly only) trout lake. Contact Mr Oliver Tel 01277 261405

### **Brook Hall Lake, Tiptree**

3 acre lake. Carp, bream, tench. Day tickets, for further information ring 01376 511349.



*Lake Meadows produced this near 20 lb bag of fish.*

### **Canvey Lake, Castle Point, Canvey**

Borough Council. Day tickets on site. Further information on 01268792711,

### **Central Park Lake, Chelmsford**

Roach, bream, carp, tench and perch. Day tickets sold on the bank. 01245 257032.

### **Chigboro Fisheries, near Maldon**

4 lakes with 40 acres of bank fishing. Carp, tench, bream and roach. Night fishing at weekend with prior arrangement. Day and season tickets. Licensed fishing lodge for snacks and table meals. Chigboro' Fisheries, Chigboro', Road. Heybridge, Maldon, 01621 857368.

### **Colony Reservoir, Hadleigh**

7 acres. Bream, roach, carp and tench. 5 permits per day from 1 July. Permits in advance or on the day from Essex Angling Centre, 109 Leigh Road, Leigh on Sea, 01702 711231.

### **Danbury Country Park, Danbury**

2 lakes, 1.75 acres. Roach, bream, perch, tench and rudd. Day tickets available on the bank. Mr K Smith, Essex

County Council, 01245 222350.

### **Fennes Estate Fisheries, Bocking**

Three lakes of 2.5 to 6 acres, for specimen and match fishing. Day tickets available from office on fishery. Toilets, Mr K Chapman, 162 Church Street, Bocking, 01376 323285.

### **Gloucester Park Lakes, Basildon**

6 acres and 1 acre. Carp, roach and tench. Day tickets on the bank. Season permits available. No pike fishing before 1 September. Mick's Tackle Shack, 01268 272252.

### **Gosfield Lake, Halstead**

Gosfield, 36 acres. Bream, carp, roach and tench. 35 night/day pegs. Match and pleasure fishing. Day and season tickets available from shop on site. Mr Turp, Gosfield Lake, Gosfield Lake, Gosfield, Halstead, 01787 475043.

### **Grange Water, South Ockendon**

22 acre lake. Carp, pike, tench and roach. Day tickets (limited number) from shop on site. Advance day and season tickets available from Essex Angling, Broadway Parade, Elm Park, 01708 428220.

### **Lake Meadows, Billericay**

5.1 acres. Carp, bream, roach, perch and pike. Day tickets on the bank. Season permits available. No pike fishing before 1 September. Mick's Tackle Shack 01268 272252.

### **Lakeside (Alexandra) Lake, Thurrock**

20 acres. Roach, carp and pike. Day tickets on the bank. Season permits available. Fishing only between 16 September to 14 March. Mick's Tackle Shack 01268 272252.

### **Lakewalk, Clacton**

0.75 acres. Carp, tench, bream and pike. Weekly tickets in advance only from 16 July. Brian Dean Tackle, 43 Pallister Road, Clacton, 01255 425992.

### **Lamb Farm St Osyth**

2 acres. Carp, tench, roach and



*A bream from Gloucester Park.*





Carp can be contacted at Slough House Lake, Bulphan.

rudd. Weekly tickets in advance only from 16 July. Brian Dean Tackle, 43 Pallister Road, Clacton, 01255 425992.

### Little Easton, Manor Fishery, Dunmow

4 lakes, 1 of 3 acres plus 3 smaller waters. Carp, roach, rudd, tench and pike. Day tickets available on the bank, Mr N V Pedley, Little Easton Manor, Dunmow, 01371 872857.

### Mill Barn Fishery, Great Wakering

Mixed coarse fishery, 4 ponds, 3 ponds on season permits. 1 pond on day ticket. Tel: 01702 262836.

### Newland Hall, Roxwell

2 lakes, 4.5 and 2 acres. Carp Waters. Day tickets on the bank. Day and night fishing. Tel: 01245 231463.

### Northlands Park, Basildon

6.7 acres. Carp, roach, pike and bream. Day tickets on the bank. Season permits available. No pike fishing before 1 September. Micks Tackle Shack. 01268 272252.

### Old Hall Lake, Herongate

3.5 acres. Carp, tench, roach, bream, pike and perch. Day tickets on the bank. Head

Warden, Essex County Council, 01277 211250.

### Park Farm St Osyth

2.5 acres. Carp, tench, roach and rudd. Weekly tickets in advance only from 16 July. Brian Dean Tackle, 43 Pallister Road, Clacton, 01255 425992.

### Pipps Hill Fishery, Basildon

15 acres. Carp, pike, roach, bream, tench and rudd. Day tickets for the Essex Pool, and night tickets and night membership for the main lake are available onsite. Tel 01268 523456.

### Range Water, Childerditch

1 acre. Carp, tench and bream. Day tickets on site (also from local tackle shops).

### Rayne Lodge Farm, Braintree

2 lakes, 1.75 and 0.75 acres. Carp to 20 lb, tench and bream to 7 lbs. Day tickets on the bank. Mr A Pearson, Rayne Lodge, Braintree, 01376 345719.

### Rochford Reservoir, Rochford

2 acres, Crucians, roach, bream, tench and perch. Day tickets on

the bank or from Rochford Angling Club. 01702 547010.

### Rushbrooke Farm Lake, Lavenham

Carp, tench, bream, roach, large rudd. Day tickets from The Tackle Box, Sudbury and Stour Valley Tackle and Trophies, Sudbury.

### Slough House Lake, Bulphan

Carp 8oz to 12 lb. Day tickets on bank (plus shops). Match and club bookings from Basildon Angling Centre

### Stambridge Starr Fisheries, Stambridge

1 acre. Mixed coarse fishery. Day tickets available on site, also refreshments, toilets. Stambridge Starr Fisheries, Stambridge Road, Stambridge 01702 258274.

### Stoke By Nayland, Golf Course, Leaveheath

7 acres. 3 lakes. Most coarse fish. Day tickets from Clubhouse. 01206 262836.

### Stanford-Le-Hope Fishery, Stanford-Le-Hope

2 lakes, 6 and 7 acres. Carp, roach, bream and rudd. Season tickets only. Leisure Sport Angling, Thorpe Park, Staines Road, Chertsey, Surrey, KT16 8PN, 01932 569393.

### Starfield Pits, Liston

6 acres, Roach, tench, bream, crucian carp and mirror carp (to 20 lb). Day tickets available in advance only. No night fishing, Long Melford and District Angling Association.

### Swanscome Farm, Earls Colne

3.5 acres. Carp, tench and pike. 30 pegs available. Day tickets available but booking essential. Mr K Gash, Swanscome Farm, Earls Colne. 01787 223562.

### The Warren, Stanford-Le-Hope

2 lakes, 32 acres. Carp, roach, bream, pike and tench. Day tickets on the bank. Shell Club (Angling Section) Springhouse Road, Corringham, Stanford-le-Hope, Essex.

## STILLWATER TIPS

■ (Right): Grab yourself some sweetcorn this Summer. Big carp and tench absolutely adore it and you can colour or flavour it to give it extra pulling power.



■ Matching bait size to fish size is very important. There's no point lobbing out a chunk of meat the size of a dinner plate if you're only after 2 lb fish.

■ Use a swivel with a snap link so you can quickly change from groundbait feeder, to maggot feeder to bomb, without having to break down your rig.

■ Treat ALL the fish you catch with care, return them carefully to the water and always obey the rules of the fishery.

# Breakaway Tackle

for all your tackle requirements at

376 BRAMFORD ROAD, IPSWICH

**Tel: (01473) 741393**

Visit our permanent Fox Carp Grotto

**BREAKAWAY DAY TICKET FISHERIES**

## A PIT BARHAM

General mixed fisheries

Easy Access

Many carp in 12-18lb range

+Tench 5-7lb

and most other species

## BRICK KILM FARM

MELTON

Specimen lake

Carp to 27lb + many bream 8-11lb

Now open 30 peg heavily

stocked Match Lake

**ALL TICKETS 1 Rod £2.50 per day, 2 rods**

**£4.00, 2 rods 24hr £5.00**

Private lake hire, week tickets and limited season tickets available from our retail shop.

# MARK FORD ROD BUILDER

- CARP RODS ● FLY RODS ● TRAVEL RODS
- MATCH RODS ● PIKE RODS ● BAIT CASTERS
- SEA RODS ● CATFISH & MAHSEER RODS

**COMMISSION A CRAFTSMAN  
TO BUILD YOUR IDEAL ROD**

- FINE QUALITY SPLIT CANE AND CARBON FISHING RODS. BLANKS, KITS AND TACKLE ACCESSORIES.
- PROFESSIONAL ROD REPAIRS AND RESTORATION
- BLANKS AND KITS CUSTOM BUILDS OF QUALITY BRITISH PRODUCTS TO RIVAL THE PRICES OF MASS IMPORT

*Visitors By Appointment*

**BECCLS (01502) 717256**

36 NORTHGATE, BECCLES, SUFFOLK NR34 9AS

**FREE CATALOGUE**

# PIKE FISHING IN NORFOLK



The UK's original Pike guide – the most experienced (25 years) and most successful (over 8,000 pike to 38lbs) – offers you the unique opportunity to join him for a day's piking/tuition.

If you want to learn how to catch and handle pike correctly.

**NO ONE IS BETTER QUALIFIED TO SHOW YOU THAN I AM.**

Don't be misled by cheap imitations, exaggerated claims or simply by others who can't possibly offer what I can.

If you want the best go with me,

if you want to waste your time and money ring

“Johnny Come Lately”

**ALL TACKLE AND BAIT PROVIDED**

Accommodation also available

*Enquiries to:*

**JOHN WATSON PIKE FISHING LTD**

**The Old House, Buxton Road, Frettenham, Norwich, NR12 7NJ**

**TEL: 01603 897713**

## ANGLING CLUBS AND ASSOCIATIONS IN EASTERN AREA

**1 Aylsham and District AC**

Mr K Sutton, 17 Town Lane,  
Aylsham, Norfolk NR11 6HH.  
01263 732433

**2 Basildon and District AC**

Mr S Hibbert, 15 Culverdown,  
Basildon, Essex SS14 2AL.  
01268 287798

**3 Beccles AC**

Mr A W J Crane, 27 Rigbourne  
Hill, Beccles, Suffolk. 01502  
716716

**4 Billericay and District AC**

Mr P Morris, 31 Lilac Avenue,  
Wickford, Essex SS12 0BL.  
01268 761281

**5 Braintree and Bocking Angling Society**

Mr M Hill, 19 Gilda Terrace,  
Rayne Road, Braintree, Essex  
CM7 8RE

**6 Bungay Cherry Tree AC**

Mr I Gosling, 37 St Mary's  
Terrace, Bungay, Suffolk.  
01986 892982

**7 Chelmsford AA**

Mrs I Lewis, 60 Delamere  
Road, Chelmsford CM1 2TG.  
01245 264832

**8 Colchester Angling Preservation Society**

Mr M K Turner, 29 Lodge  
Road, Braintree, Essex CM7  
7JA 01376 323520

**9 Colchester Piscatorial Society**

Mr R J Moore, 66 The Willows,  
Colchester, Essex CO2 8PX.  
01206 766650

**10 Colnes Angling Society**

Mr P Emson, 16 Station Road,  
Earl's Colne, Colchester, Essex  
CO6 2ES. 01787 223331

**11 Cornards Angling Club**

Mr P Franklin, 48 Queens  
Road, Great Cornard, Suffolk.  
01787 373766

**12 Dereham and District AC**

Mr D Appleby, 6 Rump Close,  
Swanton Morley, Dereham,  
Norfolk. 01362 637591

**13 Diss and District AC**

Mr K Rodwell, 5 Taylor Road,  
Diss, Norfolk IP22 3BB. 01379  
644304

**14 Dunmow and District Piscatorial Society**

Mr D J Walker, 17 Mill Lane,  
Dunmow, Essex 01371 874348

**15 Elm Park, Hornchurch and District AC**

Mr R Richardson, 67 Adelaide  
Gardens, Chadwell Heath,  
Essex RM6 6SU

**16 Essex Flyfishers Club**

Mr J Flight, 16 Rainsford  
Avenue, Chelmsford CM1 2PJ  
01245 258485

**17 Fakenham AC**

Mr G Twite, Back Street,  
Hempton, Fakenham, Norfolk.  
01328 863054

**18 Framlingham and District AC**

Mr D Smith, 11 Lark Rise,  
Martlesham Village,  
Martlesham, Ipswich, Suffolk  
IP5 7SA. 01473 623228

**19 Gipping Angling Preservation Society**

Mr G Alderson, 19 Clover  
Close, Ipswich, Suffolk. 01473  
602828

**20 Gipping Valley AC**

Mr J North, 17 Foxglove  
Avenue, Needham Market,  
Suffolk. 01449 720414

**21 Great Yarmouth and Norfolk County AA**

Mr K Ford, 2 Parana Close,  
Sprowston, Norwich. 01603  
483923

**22 Hadleigh and District Angling Society**

Mr D Warner, 5 Churchill  
Avenue, Hadleigh, Suffolk IP7  
6BT. 01473 828368

**23 Halstead and Hedingham Angling Club**

Mr P Webb, 63 Trinity Road,  
Halstead, Essex CO9 1ED  
01787 473643

**24 Hanningfield Water Fly Fishing Club**

Mr K A Pettican, 6 The Drive,  
Harlow, Essex CM20 3QD.  
01279 420454

**25 Harleston, Wortwell and District AA**

Mr P Brown, 15 Pine Close,  
Harleston, Norfolk IP20 9DZ.  
01379 853505

**26 Haverhill AC**

Mr T A Langley, 30 Parkside,  
Haverhill CB9 8NG.  
01440 704592

**27 Kelvedon and District AA**

Mr B Pike, 11 Keene Way,  
Galleywood CM2 8NT.  
01245 262545

**28 Lakeview Angling Club**

Mr D Forshaw, 22 Constable  
Avenue, Clacton-on-Sea, Essex  
CO16 8XA

**29 Lawford Angling Club**

Mr C Shaw, 45 Briardale  
Avenue, Dovercourt. 01255  
506158

**30 Leisure Sport Angling**

Thorpe Park, Staines Road,  
Chertsey, Surrey KT16 8PN.  
01932 569393

**31 Long Melford and District AA**

Mr N Mealham, 6 Springfield  
Terrace, East Street, Sudbury.  
01787 377139

**32 Maldon Angling Society**

Mr T Lazell, 14 Barn View  
Road, Coggeshall, Essex  
CO6 1RF. 01376 563937

**33 Norfolk and Suffolk Fly Fishing Club**

Mr E A Fenn, White Horse  
House, White Horse Common,  
North Walsham, Norfolk.  
01692 402162

**34 Norfolk Anglers Conservation Association**

Mr M Hitchens, Woodside  
House, 5 The Meadows,  
Aylsham, Norfolk NR11 6HP.  
01263 732752

**35 Norwich and District AA**

Mr C Wigg, 3 Coppice Avenue,  
Norwich, Norfolk NR6 5RB

**36 Paxman's Angling Club**

E Paxman Memorial Club,  
Hythe Hill, Colchester  
Essex. 01206 796515

**37 Rochford Angling Club**

Mr L Dorey, 231 Kents Hill  
Road, Benfleet, Essex SS7 5PF

**38 Salmon and Trout Association**

Lt Cdr L D Temple-Richards  
RN, Vale Farm, Stibbard,  
Fakenham, Norfolk, NR21  
0EQ. 01328 78217

**39 Saxmundham AC**

Mr A Firman, 48 Barhams  
Way, Wickham Market,  
Woodbridge, Suffolk IP13 0SR.  
01728 747787

**40 Southwold and District FAPS**

Mr J Purdy, 37 High Street,  
Southwold, Suffolk IP18 6AB.  
01502 724250

**41 Stalham Angling Club**

Mr L Reeves. 01493 721011

**42 Sudbury and District Angling Association**

Mr T Fairless, 39 Pot Kiln  
Road, Great Cornard, Sudbury.  
01787 312536

**43 Suffolk County AAA**

Mr G W Howard, 4 Merryfield  
Road, Lowestoft, Suffolk.  
01502 4024

**44 Woodbridge and District AC**

Mr D N Abbott, 17 Prospect  
Place, Leiston, Suffolk IP16  
4AL. 01728 832781

**45 Wroxham and District AA**

Mr R Westgate, 31 the  
Paddocks, Old Catton,  
Norwich, Norfolk NR6 7HF.  
01603 401062

**46 Wymondham and District AC**

Mr T Binks, 25 Rosemary  
Road, Sprowston, Norwich.  
Norfolk. 01603 405341

For information about venues  
for disabled anglers in the  
Norwich area, please contact  
Mr R Bond, 164 Bussey Road,  
Norwich NR6 6JE, Tel 01603  
402718

# IT'S RUDDY MARVELLOUS!

**T**HE face of fishing is changing. Gone are the good old days of casting a crowquill against a forest of rushes and seeing the float tip slide under from a free-feeding wild fish.

Angling is now about manufactured pools stocked full of common and mirror carp – it's as simple as that! Or is it?

For lovers of the untamed and unspoiled are fighting back. Crystal clear, scenic lakes carrying species as diverse as rudd, carp, tench, perch, chub and catfish are beginning to attract a band of followers who believe a bagfull of fish are just as enjoyable as the peace and tranquillity of beautiful surroundings.

One of these different breed of venues is Northey Park, situated on the North Bank, in Peterborough.

Created originally by diggers excavating gravel, the site was left to mother nature to care for and nurture. First the holes filled with pure water filtered by the layers of sand and gravel, this was soon followed by a wealth of vegetation, wild flowers and birds, and ultimately the fish.

Untouched by anglers, the stocks soon multiplied and now a paradise lost for 30 years has now been unveiled for fishermen to enjoy.

The three lake complex is owned by Cambridgeshire businessman Elliott Symak who invited *Angling Times* picture librarian Alan Rowe to sample the venue's delights.

Alan rigged-up a heavy waggler outfit with sweetcorn on a size 12 hook – the fish aren't too choosy – for his first crack at the Northey stocks.

With the float set at three feet deep and the young rod introducing loosefed corn into the swim at regular intervals to keep the shoals happy, Alan tempted rudd after rudd amassing a 40 lb haul in just three hours. Every specimen fin-perfect with golden flanks and blood red fins.

Whilst carp may now be Britain's most popular fish, with catches and scenery as spectacular as Northey's, there will always be a place in fishing for the untamed and unspoiled.



## FACTFILE

**VENUE:** Northey Park, North Bank, Peterborough, Cambs.

**DAY TICKETS:** £5 on the bank.

**CONTACT:** Elliott Symak 01733 558329

**NEARBY TACKLE SHOP:** Ken Wade  
01733 65159



*Teenager Alan Rowe thought he'd passed through the Pearly Gates when he landed this magnificent net of prime rudd.*



*8-9-10... Alan counts away the seconds as the ravenous rudd put a bend in his rod.*

# PUT SAFETY FIRST

Fishing has always been considered a safe quiet pastime but there are hazards on the river bank as well as in the water.

## Weils Disease

Its medical name is Leptospirosis and it is a disease that can be caught from contact with mud or water that has been contaminated by rats urine. The bacteria can survive for many days in wet conditions and infections can occur in still as well as swift flowing waters. The routes of entry into a person are via breaks in the skin or swallowing water. A more likely route for anglers however could be by eating sandwiches or smoking without cleaning the hands first.

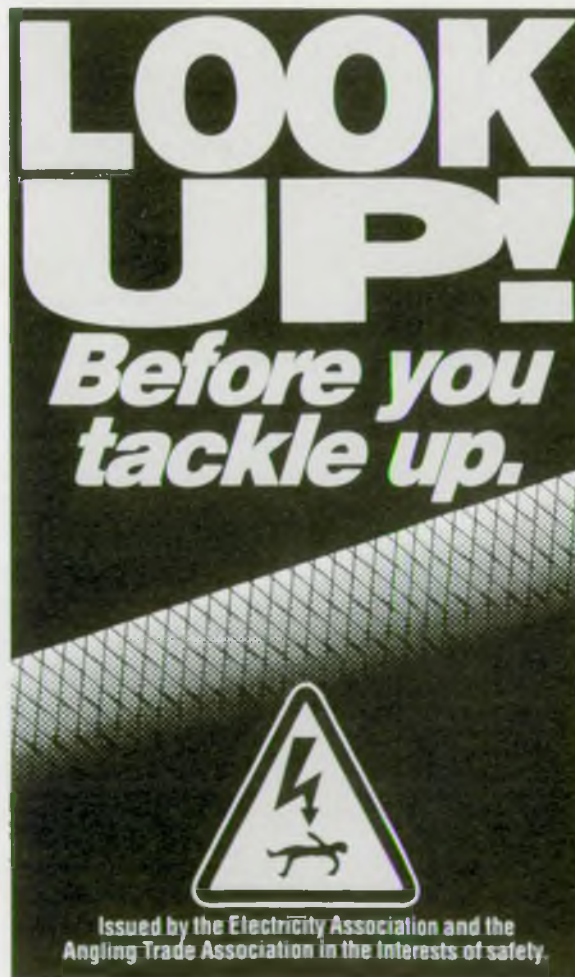
## Prevention starts with personal awareness and hygiene;

- Cover any scratches or cuts with a waterproof dressing
- Try not to put items of fishing tackle in the mouth
- Wash hands if possible or use an antiseptic hand wipe before eating
- When smoking, do not touch the butt of the cigarette with the fingers
- If you start to feel unwell and go to your doctor, let him know that you are an angler and could have come into contact with the bacteria
- If you see an unusual number of rats report it to the Environment Agency

## Overhead Electricity Cables

Fatal accidents happen every year, where anglers have allowed a fishing rod or line to touch electric cables that are present on or near the water.

- Never fish near overhead cables
- Never drive stakes or rod rests deep into the ground where underground cables may be
- Never peg out for a competition where overhead or underground cables are present



## Safety at River Control Structures

Most river control structures are fully automatic. This means the mechanisms may start up and move at any time with no prior warning. It is illegal to fish within 30 metres up, or climb onto, any river control structure. Serious injuries have occurred where children and anglers have trespassed and been injured by the moving parts of the structure.

Anglers should not fish from or near river control structures and in the interests of public safety any indication that children may gain access to such structures should be reported to the Environment Agency.



ENVIRONMENT AGENCY

# WENSUM WONDER

Want to see a success story?  
Then hop a lift with Britain's most  
famous angler, Norwich's  
John Wilson, to one of his  
favourite stretches of the  
River Wensum.



**W**HETHER you fish for huge weights or just to get away from it all, the River Wensum takes some beating.

With magnificent catches and breathtaking scenery, it is arguably Norfolk's best fishing river.

But it hasn't got that way by coincidence. Thousands of fish are stocked each year from the Environment Agency's Calverton fish farm to make the Wensum home to some of the country's finest chub, roach, dace and barbel.

Perhaps it's the growth rate of the barbel which is most impressive of all.

The hard-fighting species was only introduced to the river a few years ago, but already it has become one of the finest barbel rivers in the country with specimens to 15 lb 9 oz – just nine ounces off the British record.

The biggest at Lenwade Mill, where the first barbel was stocked just over six years ago, stands at 10 lb 2 oz from the fast-flowing water in the weirpool which they love so much.

Lenwade Mill found fame when it was featured on television in John Wilson's first series of *Go Fishing*.

So who better than to help us find the fish at Lenwade than TV's Mr Angling himself and a host of pleasure anglers.

Bathed in milky sunshine in the shadow of the huge disused mill – built in 1890 and believed to be one of the first roller flour mills in the county – the whirlpool exudes a classic charm.

But slip beneath the ripples and giant fish of all species lurk in the food-rich water.

*Left: There's no wonder John Wilson loves the Wensum with chub like this in the river.*

## FACTFILE

**VENUE:** Lenwade Mill

**LOCATION:** Lenwade, off the A1067 Norwich-Fakenham road.

**DESCRIPTION:** Weirpool seats up to nine anglers; Front Pool includes excellent disabled facilities; 300 yards of river fishing.

**RULES:** No keepnets on weirpool/front pool. Barbless hooks only.

**DAY TICKETS:** Pools £5 (£7.50 night ticket); River £3 (extra rod £2). Catch and release fly-fishing for brown trout £5.

**FURTHER INFORMATION:** Jeff Atkinson on 01603 872227.



*Right: The sluice peg on the mill is a cherished hot spot on the Wensum.*



*A fine net for Wilson.*

Chub to 6 lb, bream to 13 lb, roach pushing 3 lb and tench topping 6 lb, not to mention pike knocking on 25 lb and perch and grayling to 2 lb.

Hardly surprising John, who knows the finest waters in Britain, is a regular visitor.

Choosing a swim on the weirpool's run-off stretch, he quivertipped breadflake and was soon into a massive 6 lb chub!

To cap his morning, he added a 5 lb barbel on double maggot trotted under a two swan chubber float.

The weirpool was in fact private until three years ago but is now fishable on a £5 day ticket. It was here that the river's biggest wild brown trout, 9 lb 12 oz, was caught in the late 1950s. Famed for consistent sport throughout the season, the weirpool regularly throws up 30 lb bags with enough ton-plus catches to keep owner of 16 years, Jeff Atkinson, happy. This is feeder territory. Most baits will catch fish but an ordinary 30p loaf of bread is as good as any.

The weirpool can accommodate up to nine

anglers but, if you can't get a peg, you can either fish the Front Pool or for £3 enjoy 300 yards of river fishing to the rear of the mill.

Failing that, the Bridge public house over the road also operates 600 yards of the river, plus a well stocked lake... and the beer's not bad either!

If Wilson's weirpool wizardry wasn't enough, Norwich pleasure angler Paul Curtis then got a taste of the action. He pilfered five magnificent bream and a bonus tench for an amazing 27 lb on groundbait feeder and double red maggot.

Fishing one of the favoured pegs – concrete steps between the two sluices – Paul took the fish in a short spell casting towards the middle of the pool to an area of slack water between the currents. Gazing at torrents of white water gushing from the sluices, it was amazing to think that bream and tench – species normally associated with calmer waters – happily reside here.

"If the bream can grow to 12 or 13 lb here, imagine what size the barbel will get up to in this sort of water," mused owner





Casters are a great river bait.



Jeff. "We could well have a record barbel in several years' time."

Another slab-happy angler was Ray Smith, from Norwich shop I & S Tackle. His fabulous brace of specimens came from a tranquil depth of the Front Pool.

He tricked the plump pair in a lightly-shotted crystal waggler and single red maggot to put the icing on a marvellous session which proved you don't have to fly to Denmark or Ireland for some cracking river fishing.

With beautiful scenery and cracking fish, Norfolk's waters can make every angler's dreams come true.

*Above: It's another rod bender for a Lenwade regular.*

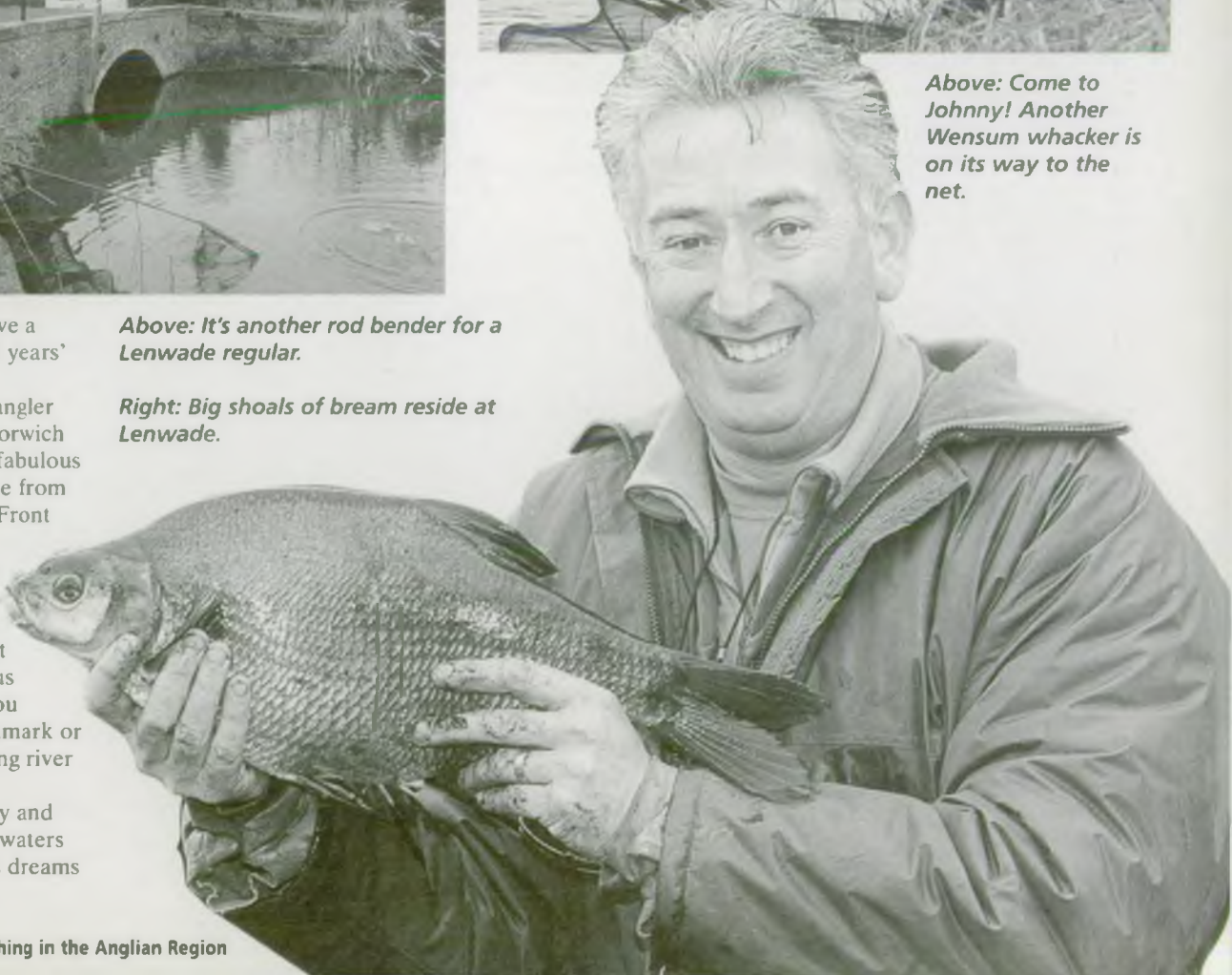
*Right: Big shoals of bream reside at Lenwade.*

**TOP TIPS**

- ◆ Humble bread is the most effective all-round bait.
- ◆ One angler, fishing into the heavy water in the weir, had 24 bream in one-and-a-half hours taken on luncheon meat on the drop.
- ◆ For barbel, feeder-fished hemp and casters are worth a try.
- ◆ The River Wensum's biggest barbel was a 15 lb 9 oz monster caught in October 1995 by David Livermore.
- ◆ Fish and the mill and you could even hook one of the rare koi carp alleged to have escaped during a flood. Catch one and transfer it to the Front Pool and you'll get your fiver for the day ticket back!



*Above: Come to Johnny! Another Wensum whacker is on its way to the net.*



# Welcome to the Central Area

There's probably no other area in the Anglian Region with a greater variety of fishing clubs and associations than in the Central Area. The list of clubs, as you will see, is large, resulting in a great diversity of fisheries for anglers wanting to pursue their sport.

The river fishing is excellent, with the winding Great Ouse always a popular haunt for both the pleasure and match angler, exploiting the good stocks of roach, chub and

bream. Also, recently the specimen barbel fishing has taken off with fish to over 15 lb and many anglers predicting even bigger in the future. Fishing on the River Cam, near the university packed city of Cambridge, continues to improve, as does the Ely Ouse and the Middle Level System.

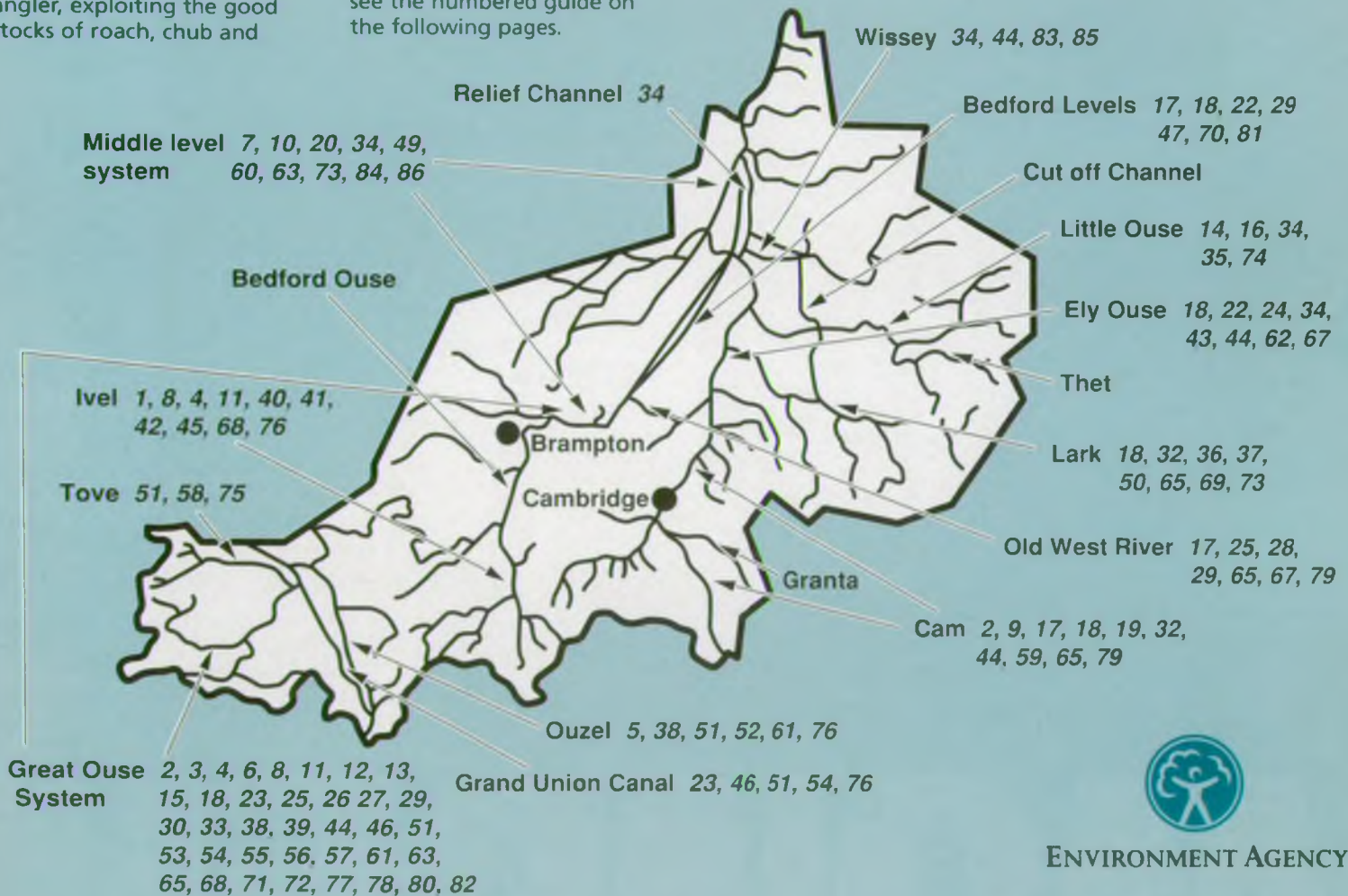
Locations of Angling Clubs in the Central Area – for a key to club location and address, see the numbered guide on the following pages.

Stillwaters also play an important role, with the Milton Keynes complexes and gravel pits along the route of the A1 road becoming increasingly significant as a big fish haunt for specimen tench, bream and carp.

Trout angling is a vital component of the region's fisheries, with Grafham Water attracting anglers from all across Britain. Grafham is one

of Anglian Water's premier game fisheries and hosts many European competitions throughout the season. The reservoir is well stocked with fully finned rainbow and brown trout.

If Central Area fishing appeals, please read the guide to waters in the Area, and book your peg or boat to find out what you shouldn't be missing.



ENVIRONMENT AGENCY

## ANGLING CLUB LOCATIONS IN CENTRAL AREA

MIDDLE LEVEL SYSTEM	07, 10, 20, 34, 49, 60, 64, 73, 84, 86	RIVER CAM	2, 9, 17, 18, 19, 32, 44, 59, 65, 79	RIVER TOVE	51, 58, 75	RIVER IVEL	1, 8, 4, 11, 40, 41, 42, 45, 68, 76, 77
RELIEF CHANNEL 34 WHOLE LENGTH		RIVER LARK	18, 32, 36, 37, 50, 65, 69, 73	RIVER OUZEL	5, 38, 51, 52, 61, 76	GRAND UNION CANAL	23, 46, 51, 54, 76
BEDFORD LEVELS	17, 18, 22, 29, 47, 70, 81	LITTLE OUSE RIVER	14, 16, 34, 35, 74	RIVER GREAT OUSE	2, 3, 4, 6, 8, 11, 12, 13, 15, 18, 23, 25, 26, 27, 29, 30, 33, 38, 39, 44, 46,		
OLD WEST RIVER	17, 25, 28, 29, 65,	RIVER WISSEY	34, 44, 83, 85				
		ELY OUSE	18, 22, 24, 34, 43,				

## Central Area – Rivers

### RIVER GREAT OUSE

The River Great Ouse flows 148km between Buckingham and Earith offering an interesting variety of fishing with over 20 species of coarse fish.

The fish population is surveyed every five years as part of a routine fisheries monitoring programme. Latest results from Buckingham to Newport Pagnell indicate good stocks of fish with roach the dominant species and chub locally important.

Roach and dace populations show healthy levels of recruitment which should support the fishery in future years. Towards Newport Pagnell good sized barbel are frequently reported by anglers.

Two major tributaries join the Great Ouse along its upper reaches – the River Tove and the River Ouzel.



*The River Cam has a variety of depths, flows and habitats.*



*The Great Ouse at Littleport.*

The Tove flows for around 22 km mostly over clean gravel substrate. A fairly narrow river with varying depths, it has a 'Class A' fishery status and as such holds a good stock of chub, dace, roach and pike.

The Ouzel is about 20 km long and contains a series of pools, glides and riffles with marginal and instream vegetation providing excellent habitat.

Consequently it is a 'Class A' fishery with high stocks of chub, dace and roach with bream present in the lower reaches. Between Newport Pagnell and Bedford the Great Ouse meanders extensively and contains a varied sequence of pools and riffles over a gravel bed

This section contains some good-sized roach and chub and there is a successful breeding population of barbel.

The last fish population survey highlighted the importance of shallow riffles as fish holding areas and recent spawning successes should ensure good angling on this part of the river.

Downstream of Bedford the character of the river changes as the channel becomes navigable and there are numerous locks and weirs. Here the water becomes deeper, wider and

slower flowing creating a considerably different habitat for fish.

Between Bedford and Huntingdon moderate fish stocks are dominated by roach, although locally shoals of bream dominate catches.

Chub are locally important and tend to be concentrated in side channels and backwaters and occasionally tench can be found close to dense lily pads. Biomass estimates indicate moderate to good stocks for this section.

A third tributary – the River Ivel – joins the Great Ouse at Tempsford meandering from its source near Hitchin for 20km, forming a series of shallows and deeper pools.

The Ivel is a popular 'Class A' fishery with chub and roach dominant and bream in the deeper sections. The Ivel navigation section is more channelised and is a 'Class B' fishery, although good catches are frequent.

The water downstream of Huntingdon performs well as a roach and bream fishery and has benefitted from re-stocking with large specimens of both in recent years. Match fishing regularly occurs on these stretches and the average winning weight is about 10 lb.

# YOUR OWN FISHERY?

You've always dreamed of owning your own fishery but lack the finance, backing, planning and marketing skills to turn the dream into a reality...



## A.C.T. CAN MAKE THAT DREAM COME TRUE!

As part of our continued commitment to Leisure Angling, we can now provide students with assistance with all types of fishery acquisition and ownership including:

- ◆ Planning ◆ Finance
- ◆ Marketing and Management

In plain English, any student successfully completing one of our management courses can now obtain help from the college in finding, leasing, developing and marketing a leisure fishery of their very own. Providing you have a viable idea, A.C.T. can act as your partner in the fishery, providing the necessary assistance and funding to make your dream come true.

## STOP DREAMING, START TRAINING!

**A.C.T. National Home Study Admissions Office  
Pinner, Middlesex HA5 4BR**

**Tel: 0181 421 0766**



*A fine haul from the River Cam.*

### RIVER CAM

Upstream of Cambridge: Above Duxford the river is fished by trout syndicates and supports a population of breeding trout.

Downstream of Duxford the river has good stocks of large chub, dace and roach and with its variation of flow, depth and habitats it is an excellent and popular fishery.

The river is joined downstream of Hauxton by the River Rhee and in its lower reaches supports fishing for chub, dace, roach and bream.

Two other minor tributaries - the Bourn brook and the River Granta flow into the river and although both contain chub and dace, both are mostly quite narrow and shallow and are not considered important fisheries.

Downstream of Cambridge: A

recent survey on a 13 mile section to the confluence of the Ely Ouse showed very good numbers of fish, dominated by roach and pike.

Anglers have had great sport here for the last few seasons and the best catches are taken between Baitbite Lock and Clayhithe Bridge, with Bottisham Lock also worth a visit.

### ELY OUSE

The Ely Ouse begins near Stretham and where the Rivers Cam and Old West meet and continues for around 19 miles to Denver where it joins the tidal River Great Ouse.

A recent survey shows it to be an excellent fishery, dominated by roach and bream. Best catches come from around Ely

and Ten Mile Bank. During its course the Ely Ouse is joined by four other rivers, the Old West, the River Lark, the Little Ouse and the River Wissey. All are popular and capable of producing good catches.

### THE RIVER LARK

Upstream of Barton Mills the Lark supports a trout fishery stocked annually with brown trout by various fishing syndicates. From Mildenhall down to the confluence with the Ely Ouse, near Littleport, it is a Class B fishery dominated by roach and bream. Prickwillow Village and the area around Isleham Marina are popular angling spots.

### THE LITTLE OUSE RIVER

The 35 km stretch of the Little Ouse from Thetford to the Ely Ouse can be split into two sections.

From Thetford to Brandon, the Little Ouse is fairly shallow and fast flowing and dominated by dace and roach.

Downstream of Brandon the Little Ouse becomes deeper and slower flowing, a good roach fishery with common bream and pike also present in good numbers. The Little Ouse is a well known winter pike fishery and also a popular match venue.

### THE RIVER WISSEY

The upper reaches of the Wissey are dominated by syndicate trout fisheries. However, for 20 km downstream of Whittington it is

a moderate Class B coarse fishery with the areas around Hilgay particularly popular, roach again the dominant species.

### THE OLD WEST RIVER

The Old West river begins at Earith and joins the Ely Ouse 18 km away near Stretham. Except for in times of flood it has very little flow and is basically a long shallow pond. Roach, bream, pike and zander are all found along the system, especially around the marinas in winter.

### THE MIDDLE LEVEL SYSTEM

The Middle Level system supports some of the best known fisheries in the Region and consists of a network of 13 major drains and the Cambs Fenland, covering 80 miles. These are the Forty Foot, the Twenty Foot, the Sixteen Foot, the Middle Level Main Drain, Pophams Eau, Bevills Leam, Twenty Foot River, Old River Nene, Well Creek, Yaxley Lode, Kings Dyke, Whittlesey Dyke, Monks Lode and the Great Raveley Drain. The most recent survey indicates a good fishery, dominated by roach, bream and pike. The Middle Level also produces many of the country's specimen zander every year. The enormous area covered by the Middle Level system means the size of angling catches will often depend on locating the bream and roach shoals, especially in winter. The Old River Nene around the fenland town of March can usually be relied upon for good roach catches in the colder months of the year.

### THE BEDFORD LEVELS SYSTEM

The Bedford Levels system consists of three rivers (The River Delph, the Counterwash Drain and the Hundred Foot River) which run parallel for around 20 miles to Denver.

Popular areas are around Welney and Welches Dam. The Hundred Foot River is not routinely monitored by the Agency because of its tidal nature and is only fished for around half its length. The Earith end is, however, a noted summer fishery.

For information on day tickets and club books, check with a local tackle shop before fishing.



*The Middle Level gives great roach and bream sport as well as super zander action.*

## Central Area – Day Ticket Trout Fisheries

### **BEDFORDSHIRE Summerfield Fishery, Haynes, Bedford**

On A600, open March to Nov 30, 9 am to sunset. Tel: 01234 381400.

### **Little Heath Farm, Gamlingay, Beds**

On Little Heath Road, Gamlingay, Sandy. Open from March 12. Tel: 01767 650301.

### **Manor Farm, Sandy, Beds**

Off A1 south of Sandy - turn left from Southbound carriageway. One pool, five acres. Open March 18. Cheap rates for OAPs. Tel: 01767 313802.

### **NORFOLK Narborough Trout**

### **Lakes Narborough, near King's Lynn.**

Four lakes, open all year. Tel: 01760 338005.

### **Woodlakes Caravan Park, Stow Bridge, near King's Lynn**

One lake, ten acres. Open all year. Tel: 01553 810414.

### **CAMBRIDGESHIRE Chatteris Aquasports, Block Fen, Chatteris**

Open April 1, Tel 01354 693190 or 01223 861078 (eves)

### **Grafham Water, West Perry, Huntingdon**

1500 acres of reservoir fishery, bank and boat. Opens April 1 to Dec 31. Tel: 01480 810531

### **Earith Trout Fishery, Holme Fen**

### **Drove, Earith**

One lake, 36 acres. Opens April 2. Two lakes, one of which contains large fish and is a catch and release lake. Tel: 01487 740301.

### **SUFFOLK Larkwood Fishery, West Stow, Bury St Edmunds**

Two lakes, five acres. Open all year. Tel: 01284 728612.

### **Hatchery House, MacRae Farms Limited, Mill Lane, Barrow**

Two lakes, one acre each. Opens March 26 to Oct 2. Tel: 01284 810333.

### **BUCKS Aiders Farm, Great Brickhill, South West**

### **Milton Keynes**

Three lakes, three acres each. Day tickets available Tel: 01525 261713.

### **Kingfisher Farm, Buckingham Road, Deanshanger**

Three miles west of Stony Stratford. One lake, a quarter acre. Tel: 01908 562332.

### **Church Hill Farm, Mursley**

Situated 3.5 miles from old town of Winslow. Two lakes, two and nine acres. Opens March 11 to Nov 30. Tel: 01296 720524.

### **Lakeside, Wing Road, Cublington**

Open all year. Tel: 01296 682201.



*Fenland Lakes are well stocked with carp.*

## Central Area – Stillwaters

### **Bedford Boating Lake, Bedfordshire**

Situated alongside the Great Ouse Bedford Embankment, Free fishing, most species, 1.5 acres quite shallow.

### **Blue Lagoon, Bletchley, Bucks**

Run by MK AA. Ten acre pit up to 50ft deep in places. Day tickets £3 on bank.

### **Buckenham/Ickburgh Pits, Norfolk**

Two small lakes near Mundford, Norfolk run by Mundford AC. Bigger pit is up to 20 ft deep, the smaller one up to 14 ft. Both contain most species. Tickets from the tackle shop in Thetford. Tel: 01842 764825.

### **Caldecotte Lake, Milton Keynes, Bucks**

Run by MKAA. 80 acre lake averaging 12 ft deep. Mixed coarse fishery. Day tickets £3.

### **Caxton Park Lakes, Cambs**

Privately run water situated between villages of Caxton and Bourn, Cambs. Three mixed coarse lakes. Tel: 01954 719430.

### **Chatteris Aqua Sports, Cambs**

Situated off the A142 on Block Fen near Mepal. The fishery has one carp lake and one general coarse fish lake. Tickets from the site office. Tel: 01354 69214.

### **Cosgrove Park Leisure Complex, Bucks**

Near Stony Stratford, MK. Eight mixed coarse lakes. Tel: 01908 563360/562846.

### **Crystal Lakes, Cambs**

Day ticket fishery and caravan park at Fenstanton. Cambs. Tel: 01480 497728/498388.

### **Emberton Park Leisure Complex, Bucks**

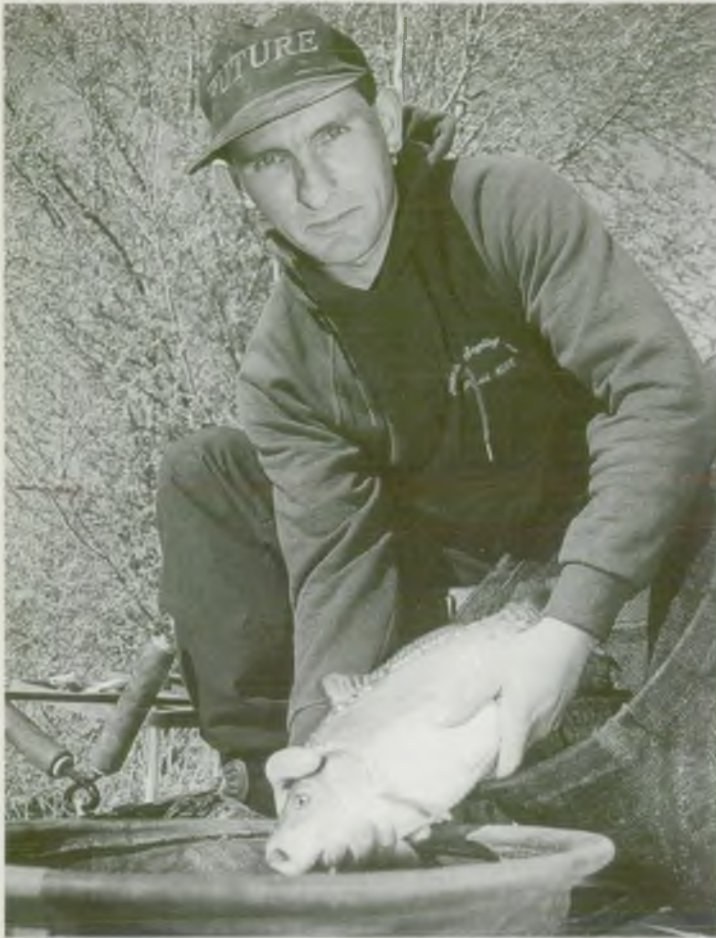
Just outside Olney Bucks. Several mixed coarse lakes run by MK Borough Council. Tickets from the park office. Tel: 01234 711575.

### **Fen Drayton Complex, Cambs**

Between St Ives and Cambridge. Three mixed lakes run by Agrevo AC. Tickets from local tackle shops.

### **Fenland Fisheries, Earith, Cambs**

Two privately run lakes on the outskirts of the village of Earith, Cambs, (follow signs for the



*Another fighting-fit Fenland carp in the bag.*

industrial estate). The fishery is to the right of the gravel track and consists of two lakes - one being two acres in size and the other seven acres in size and the other seven acres containing specimen carp. Tel: 01487 841858.

**Fosters End Pit, Blackborough, near Kings Lynn, Norfolk**

Old gravel pits run by King's Lynn AA. Containing most species.

**Furzton Lake, Milton Keynes, Bucks**

Run by MKAA. 70 acres mixed lake around 6 to 8 feet deep. Day tickets to £3 on bank.

**Hinchingbrooke Country Park, Huntingdon, Cambs**

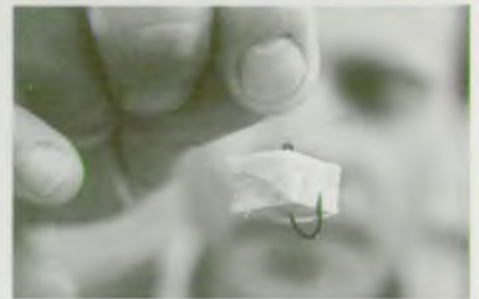
20 acre lake containing most species. Tickets from the visitors' centre or from bailiff on bank. Tel: 01480 451568

**Hyde Lane Lakes, Northwest of Buckingham, Bucks**

A well known carp water run by Buckingham and District AA.

**STILLWATER TIPS**

■ (Right): When fishing luncheon meat, the simplest way to attach it is to push your hook downwards through the meat and secure it with a piece of grass.



■ A short and clear waggler float is ideal for fishing shallow as the fish have difficulty spotting it from below.

■ Try piling in a load of white maggots and left-over meat before a session for eels. They are often drawn to the smell of rotten meat and love white maggots.

**Ickworth Lake One, Ickworth House Estate near Horringer, Bury St Edmunds, Suffolk**

Five acres in size containing roach, rudd and tench. Tickets from the bailiff on the bank.

**Impingham Lake, Histon, Cambs**

A large former gravel pit next to the A45 near Histon, Cambs. Entrance via the Forte Hotel. Mixed coarse fishery. Tickets from office onsite.

**Ivel Valley Fisheries, Bedfordshire**

Lake next to the River Ivel, south of Broom. Tickets available from tackle shops in Stotfold and Bedford.

**The Knot, (Nut) Hole, Bletchley, Bucks**

Another MKAA water containing most species and averaging four to eight feet deep. Day tickets £3.

**Landbeach Lakes, Cambs**



*Pisces Fishery at Welney is picturesque and prolific.*



*This Pisces specimen took sweetcorn.*

Four lakes, mixed coarse fishery, north Cambridge. Tel: 01223 300216.

**Lily Park Fisheries, Cambs**

On the outskirts of Earith opposite Fenland Fisheries, this general mixed fishery consists of three lakes, one of which is 30 acres. Tickets £5 on bank.

**Little Paxton Fishery, Cambs**

One lake in gravel works near Little Paxton village, St Neots, Cambs. Mixed fishery. Tickets from St Neots tackle shops. Tel: 01480 476088.

**Lodge Lake, Milton Keynes, Bucks**

Another MKAA water holding plenty of everything.. Up to 12ft deep with 40 permanent pegs, day tickets are £3.

**Lynford Lake, Norfolk**

A lake near Lynford Hall, Mundford, AC and containing most species. Tickets from Thetford Tackle Shop. Tel: 01842 764825.

**Manor Farm Ffishery, Sandy, Bedfordshire**

Situated next to the A1 at Sandy, this new lake, within an existing trout fishery contains most species. Tel: 01767 313802.

**Milton County Park, Cambs**

Two lakes just north of Cambridge, containing mostly carp.

**Nar Valley Fisheries, Norfolk**

Nine lakes at Blackborough End, near King's Lynn. Tel: 01553 841044.

**Pingles Pit, Cambs**

About four acres in size this water next to the Old Bedford/Counter Wash Drain at Mepal, Cambs contains carp and most other species. Tickets from PH in Mepal or from the bailiff on the bank.

**Pisces Fishery, Cambs**

A privately run fishery and caravan park on the west bank of the Old Bedford River, south of Welney Village. Two small lakes up to nine feet deep with a

good head of small carp, perch, rudd, crucians and lots of tench on a day ticket. A great pleasure angler's water when on form. Tel: 01354 610257.

**Priory Country Park, Bedford**

Two lakes run by Beds Council, Priory Lake is 64 acres and up to 12 ft deep and contains most species. Fingers Lake is smaller and is a well known tench water. Tickets from the warden's office. Tel: 01234 211182.

**Roswell Pits, Ely, Cambs**

Run by Ely Beet A/C, large, deep pit. Good for pike and zander.

**S and D Fishing Lakes, Overcote Road, Over, Cambs**

Three lakes containing a mixture of species. Disabled anglers are well catered for and for them fishing is free. Otherwise day tickets are £2. Agency licences sold.

**St Ives Complex, Cambs**

Controlled by St Ives Angling Centre, this venue has ten lakes of varying depths and sizes containing most species. Tickets are £3 from the shop or £5 on the bank. Tel: 01480 301903.

**Swangey Lakes, Two Lakes near West Carr, Attleborough, Norfolk**

One 4.5 acre lake is up to 24ft deep and the 1.5 acre lake goes to about 14ft deep. A predominantly carp and tench water, but other species are present. Tel: 01953 881330.

**Teardrop Lakes, Milton Keynes, Bucks**

Three smallish lakes of about two acres each, again run by MKAA. These lakes are good pleasure angling waters, containing most species. Day tickets are £3.

**Thompson Water, Norfolk**

On Lord Walsingham's estate



*Tingrith Lakes provide great all-round fishing.*





A fish is played to the net at Tingrith.

South of Watton, Norfolk. A large shallow 30 acre lake containing carp and most other species. Tickets from the bailiff on the bank or the estate office. Tel: 01953 883370.

### Tingrith Lakes, Beds

At Tingrith off A5120, junction 12 M1. Two lakes, 11 acres. Open all year except August and Tuesdays. Tel: 01525 714012.

### Turk's Head Lake, Cambs

A farm lake on Smithey Fen, Cottenham, Cambs containing large carp and a variety of other species, 40 swims available, tickets on bank. Tel: 01954 250687.

### Wood Lakes Fishery/ Caravan Park at Stowbridge near Downham Market, Norfolk

Four lakes best known for their carp fishing, although holding most species. Tickets from fishery office. Tel: 01553 810414.

### Woolpack Fisheries, Godmanchester, Cambs

Situated at the end of Cow Lane, Godmanchester. There

are eight lakes to fish with most species present. Tickets from Stanjay Tackle in Godmanchester. Tel: 01480 453303 at £3 or £5 on the bank.

### West Fen Lakes, Hilgay

Situated on the main A10 road Hilgay by pass behind Hilgay Farm shop. Two lakes of about 2.5 acres holding bream, carp and roach. Tickets on bank or from farm shop.

### Willen Lakes (N and S), Milton Keynes, Bucks

Two huge lakes, the south being about 150 acres, containing plenty of fish and regarded as good venues for pleasure anglers. Day tickets £3. Controlled by MKAA.

### Wyboston Lakes, Bedfordshire

One large lake within the golf complex. Tickets £4 from the golf pro shop. Tel: 01480 212501.

## STILLWATER TIPS

■ (Right): Carry a selection of feeders and bombs in different sizes and weights – you may have to cast further or lob more bait out as the season progresses.



■ Many fisheries insist that anglers use barbless hooks or they can have specific rules on baits or groundbaiting. Check the rules carefully before starting to fish.

### FIELDS END WATER

DODDINGTON, MARCH, CAMBS.  
CARP, TENCH, ROACH, PERCH  
Day & Evening Tickets  
Match Bookings Considered  
Also available - Self catering Accommodation  
MATURE 3 ACRE RESERVOIR  
Stocked with  
NORWOOD COTTAGE  
Close to Twentyfoot River - March  
Contact Mrs. Boughton - 01354740373

### MANOR FARM LEISURE

DAY TICKET COARSE & TROUT FISHERY  
*Relax unwind and enjoy the tranquility of Manor Farm*  
Open Daily All Year, 7am to Dusk  
Closed 25 & 26 December  
Trout Lake                      Carp Lake  
Mixed Lake                     River Ivel  
Lodge                             Toilet  
Tackle Shop                    Rod Hire  
Tuition                           Refreshments  
Lower Caldecot, Biggleswade, Beds  
Telephone Fax: 01767131802  
Directly off the A1, 2 miles south of Sandy

### EXCELLENT COARSE FISHING

Beautiful Lakes and River areas.  
Over 28 acres. Fishing dawn til dusk.  
Memberships available now at £70.00  
Day Tickets £6.00 per day  
For more information contact Louise at:  
**SIBSON FISHERIES**  
Stibbington, Peterborough  
Tel: (01780) 782621

### PISCES CARAVAN PARK & FISHERY

Are you looking for peace & tranquility.  
& plenty of good fishing!  
A small park with a big reputation.  
New & secondhand caravans for sale.  
Send SAE for brochure.  
BEDFORD BANK WEST, WELNEY  
CAMBS. PE14 9TB  
PHONE 01354 610257



### GODMANCHESTER

Eight lakes, plus three-quarters of a mile of River Ouse and backwater, on a 70-acre site. All well stocked (Carp 30lb+, Pike 30lb+)

THREE LAKES OPEN  
CLOSE SEASON  
Membership: Ordinary £45.00  
Syndicate                     £150.00  
Day Tickets: £4.00 in advance  
£6.00 on bank

Details  
**STANJAY TACKLE**  
7 Old Court Hall  
Godmanchester  
(1 mile from fishery)  
Tel: Huntingdon (01480) 453303

**STOCKISTS OF NUTRABAITS**  
Nash, Solar, Hutchinson, Kryston, Fox, Gardner, Delkim, Optonics, Daiwa, Leeda, Korda, Owner, Drennan, Eustace, Shimano, Carp 'R' Us, Sportex, Wychwood, KJB, Richworth, Partridge, Relum, Chub, North Western, Mainline etc.

## ANGLING CLUBS AND ASSOCIATIONS IN CENTRAL AREA

**1 Abbey Cross AC**

Mr P Jordan, 12 Burnside,  
Hertford, Hertfordshire  
SG12 2AW

**2 AgrEvo Ac**

Mr T Allison, AgrEvo UK  
Limited, Hauxton,  
Cambridgeshire CB2 5HU.  
01223 870312

**3 Ampthill and District  
Angling & FPS**

Mr R A Ward, 15 Kingfisher  
Road, Flitwick, Bedfordshire  
MK45 1RA

**4 Barnet and District AC**

Mr J A Perkins, 4 East View,  
Hadley Green, Barnet,  
Hertfordshire EN5 5TN.  
0181 4401303

**5 Beacon AC**

Mr D Bacon, 18 The  
Hedgerows, Furzton, Milton  
Keynes MK4 1BD.  
01908 502577

**6 Bedford AC**

Mrs M Appleton, 18 Moriston  
Road, Brickhill, Bedford.  
01234 354708

**7 Benwick AC**

Mr C Onyett, 82 Ramsey Road,  
Ramsay Forty Foot,  
Cambridgeshire PE17 1XN.  
01487 814671

**8 Biggleswade, Hitchin  
and District AC**

Mr P Currell, 10 Poplar Close,  
Sandy, Bedfordshire.  
01767 682619

**9 Bishop Stortford and  
District AS**

Mr H Toynton, 33 Blythwood  
Gardens, Stanstead, Essex  
CM24 6HQ

**10 Blacksmith Arms AC**

Mr M A Burrows, 6 Sachwood  
Avenue, Emneth, Wisbech  
Cambridgeshire

**11 Blunham and District  
AC**

Mr G Palmer, 5 Brockwell,  
Oakley, Bedfordshire MK43 7TD.  
01234 823959

**12 Bourton Fisheries**

Mr S Martin, Glynwood Road,  
Buckingham, Buckinghamshire  
MK18 1JF.  
01280 817107

**13 Brampton AC**

Mr K Medlock, 1 Staunch Hill  
Road, Sawtry, Cambridgeshire  
PE17 5XG.  
01487 830984

**14 Brandon and District  
AC**

Mr P Cooper, 16 High Street,  
Feltwell, Thetford, Norfolk  
IP26 4AF.  
01843 828448

**15 Buckingham and  
District AA**

Mrs J Begley, 20 Vicarage Road,  
Steeple Claydon,  
Buckinghamshire MK18 2PU.  
01296 730577

**16 Bury St Edmunds AA  
(Coarse)**

Mr J Easdown, 11 Fiske Close,  
Bury St Edmunds, Suffolk  
IP32 7LX

**17 Cambridge Albion AS**

Mr R Gentle, 34 Ramsden  
Square, Cambridge CB4 2BL  
01223 426711

**18 Cambridge FPAS**

Mr G Tweed, 27A Villa Road,  
Impington, Cambridge.  
01223 234616

**19 Cambridge Izaak  
Walton Society**

Mr T Sawyer, 6 Pump Lane,  
Hardwick, Cambridge CB3 7SW.  
01954 211531

**20 Chatteris Working  
Men's Club & Institute  
Limited**

Mr B Kightley, 10 Salem Court,  
Chatteris, Cambridgeshire  
01354 692015

**21 Church Pit FPAS**

Mr T Bridgefoot, Bluebell  
Cottage, Walnut Road, Walpole  
St Peter, Wisbech PE14 7PE

**22 Cooper AC**

Mr J Dickens, 2 Witchford

Road, Ely, Cambridgeshire  
01353 663398

**23 Deanshanger and  
Stratfords AA**

Mr T Valentine, 34 Malletts  
Close, Stony Stratford, Milton  
Keynes MK11 1DQ

**24 Ely Beet Sports and  
Social Club**

Mr D Dummet, 79 West Fen  
Road, Ely, Cambs CB6 3AA.  
01353 664919

**25 Eternit UK Ltd AC**

Mr Yaxley, Meldreth, Royston,  
Hertfordshire SG8 5JX

**27 Godmanchester  
AFPS**

Mrs L Christian, 35 Post Street,  
Godmanchester, Huntingdon,  
Cambridgeshire.  
01480 451260

**28 Haverhill Angling  
Club**

Mr D White, 33 Bute Court,  
Haverhill, Suffolk CB9 8LP.  
01440 63057

**29 Histon and District AS**

Mr C Dodd, 122 Rampton  
Road, Willingham,  
Cambridgeshire  
01954 260365

**30 Houghton and Wyton  
and Hemingford AS**

Mr A Wilkinson, 22 Erica Road,  
St Ives, Cambridgeshire  
PE17 6AE.  
01480 466525

**31 Huntingdon AFPS**

Miss A Wallis, 8 Claytons Way,  
Huntingdon, Cambridgeshire  
01480 458935

**32 Isleham Angling  
Society**

Mr A W F Mayes, 88 Churchill  
Avenue, Newmarket, Suffolk.  
01638 662665

**33 Kempston AC**

Mr K Green, 24 The Elms,  
Kempston, Bedford MK42 7JW.  
01234 854165

**34 Kings Lynn AA**

Mr M R Grief, 67 Peckover  
Way, South Wootton, King's  
Lynn, Norfolk PE30 3UE.  
01553 671545

**45 London Colney AC**

Mr A Barrett, 94 Roestock  
Lane, Colney Heath, St Albans  
Hertfordshire AL4 0QN

**35 Lakenheath AC**

Mr R Powell, 12 Compass Close,  
Lakenheath, Suffolk IP27 9AL.  
01842 860060

**37 Lark Engine AC**

Mr A Palmer, 13 Kingdom  
Avenue, Prickwillow, Ely,  
Cambridgeshire  
01353 88447

**38 Leighton Buzzard AC**

Mr H Holliday, 54 Pebble  
Moor, Edlesborough,  
Leighton Buzzard,  
Bedfordshire LU6 2HZ.  
01525 2221247

**39 Leighton Buzzard and  
District WMC**

Mr T Brightman, 37 Garden  
Hedge, Leighton Buzzard,  
Bedfordshire LU7 8EF.  
01525 371075

**40 Leisure Sports AC**

Leisure Sport, Thorpe Park,  
Staines Road, Chertsey,  
Surrey KT16 8PN.  
01932 564872

**41 Letchworth and  
District AA**

Mr N Jones, 79 Howards Drive,  
Letchworth, Hertfordshire  
01462 676779

**42 Leviathan AC**

Mrs B Myers, 19 Grendon  
Gardens, Wembley, Middlesex  
MA9 9NE.  
0181 9043692

**43 Littleport AC**

Mr D Yardy, 168 High Barns,  
Ely, Cambridgeshire CB7 4RP.  
01353 669323.

**44 London Anglers'  
Association**

Mr A E Hedges, Izaak Walton  
House, 2a Hervey Park Road.

Walthamstow, London E17 6LJ.  
0181 520 7477

#### 46 Luton AC

Mrs B A Bunnage, 33  
Kingsdown Avenue, Luton,  
Bedfordshire LU2 7BU.  
01582 37615

#### 47 Manton AC

Mr G Culley, Manton  
Insulations Ltd, Little End  
Road, Eaton Socon, St Neots,  
Cambridgeshire PE19 3JH.  
01480 214300

#### 48 Manea AC

Mr R Dent, 1 Lynford Cottages,  
Fodder Fen, Manea,  
Cambridgeshire PE15 8LS.  
01354 78411/01223 315315

#### 49 March and District AA

Mr H C Asplin, 21 New Park,  
March, Cambridgeshire  
01354 52707

#### 50 Mildenhall AC

Mr P Lyes, 10 Church Walk,  
Mildenhall, Suffolk.  
01638 715895

#### 51 Milton Keynes AA

Mr Pemberton, 45 Cranesbill  
Place, Conniburrow, Milton  
Keynes, Buckinghamshire  
MK14 7BN.  
01908 660579

#### 52 Newport Pagnell Fishing Association

Mr R Dorrill, 7 Bury Street,  
Newport Pagnell,  
Buckinghamshire  
01908 610639

#### 53 Northampton Castle AC

Mr T Rodhouse, 12 Somerville  
Road, Daventry,  
Northamptonshire.  
01327 705692

#### 54 Northampton Nene AC

Mrs P Walsh, 363 Kettering  
Road, Northampton NN3 6QT.  
01604 492652

#### 55 Offord and Buckden AS

Mr R Wood, The Boat House,  
Carters Boatyard, Mill Road,

Buckden, Cambridgeshire  
01480 811503

#### 56 Olney and Clifton FA

Mr K V Osborne, 11 Gilpin  
Way, Olney, Buckinghamshire  
MK46 4DN.  
01234 713144

#### 57 Over and Swavesey District AS

Mr D Cook, 75 Willingham  
Road, Over, Cambridgeshire  
CB4 5PE.  
01954 230076

#### 58 PAC

Mr P Stewart, Hillcrest, Pury  
End, Towcester, Northants  
NN12 7NX.  
01954 230076

#### 59 PBI Angling Club

Mr A Taylor, 5 Greenfield  
Close, Stapleford,  
Cambridgeshire CB2 5BT.  
01223 843036

#### 60 Peterborough and District AA

Mr P Doel, 2 Meadow View,  
Cemetery Road, Whittlesey,  
Peterborough, Cambridgeshire  
PE7 1EZ.  
01733 204849

#### 61 Potters Bar and District AC

Mr R Clarke, 34 St Annes  
Close, Cuffley, Hertfordshire  
EN7 6JA

#### 62 Pymoor AC

Mr F Gilbert, 10 Park Lane,  
Little Downham, Ely,  
Cambridgeshire  
01353 699415

#### 63 Ramsey and District AS

Mr P Aldred, 9 Blackmill Road,  
Chatteris, Cambridgeshire  
PE16 6SR

#### 64 Ridgewood AC

Mr P Middleton, 9 Abercorn  
Place, Kings Hedges Road,  
Cambridge CB4 2UX.  
01223 573453

#### 65 Royston and District AC

Mr P Harrow, 46 Greengate  
Rise, Melbourn, Royston,

Hertfordshire SG8 6DS  
01763 220455

#### 66 Rushden, Higham Ferrers & Irchester AA

Mr D Parkins, 31 Mountfield  
Road, Irthlingborough,  
Northants.  
01933 651400

#### 67 Saffron Walden AC

Mr N Roberts, 55 St Marys  
Road, Sawston, Cambridge  
CB2 4SP.  
01223 836773

#### 68 Shefford and District AA

Mr J Leath, 3 Ivel Close,  
Shefford, Bedfordshire SG17 5JX.  
01462 812323

#### 69 Soham AC

Mr P Brooks, 17 Fleet Close,  
Littleport, Cambridgeshire  
CB6 1PG.  
01353 862815

#### 70 Spratts AC

Mr K Wilkinson, 9 Goodens  
Lane, Newton, Wisbech,  
Cambridgeshire PE13 5HQ.  
01945 870020

#### 71 St Ives AFPS

Mr H Pace, 48 Fairfields, St  
Ives, Cambridgeshire  
01480 469254

#### 72 St Neots and District AFPS

Ms D Linger, Skewbridge  
Cottage, Great Paxton, St Neots,  
Cambridgeshire PE19 4RA.  
01480 216730

#### 73 Sutton AC

Mr T Sulman, 105 Stretham  
Road, Wilburton,  
Cambridgeshire CB6 3RY.  
01353 649509

#### 74 Thetford and Breckland AC

Mr S J Armes, Kings Croft,  
Shropham Road, Gt Hockham,  
Thetford, Norfolk IP24 1NJ.  
01953 498686

#### 75 Towcester and District AA

Mr C Walden, 5 Towcester  
Road, Silverstone, Northants

NN12 8UB.  
01327 858299

#### 77 Vauxhall AC

Mr R Poulton, 20 Leeches Way,  
Cheddington, Beds. LU7 0SJ.  
01296 668985

#### 78 Verulam AC

Mr J Trew, 128 Benson Close,  
Luton, Bedfordshire LU3 3QR.  
01582 593748

#### 79 Waterbeach AC

Mr H Reynolds, 3 Crosskeys  
Court, Cottenham,  
Cambridgeshire CB4 4UW.  
01954 250886

#### 80 Wellingboro and District Nene AC

Mr R Blenkham, 66 Redland  
Drive, Kingsthorpe,  
Northampton NN2 8TU.  
01604 847106/820380

#### 81 Welney AC

Mr D Booth, Shaneden,  
Bedford Bank West, Welney,  
Wisbech, Cambs. PE38.  
01354 610247

#### 82 Weston Underwood AC

Mr D Adams, 12 The Close,  
Weston Underwood, Nr Olney,  
Buckinghamshire  
01234 711418

#### 83 Whittington AC

Mr M Mycock, 4 Furlong Road,  
Stoke Ferry, King's Lynn,  
Norfolk PE33 9SU.  
01366 500250

#### 84 Whittlesey AA

Mr J Warren, 55 Bellmans  
Road, Whittlesey, Peterborough,  
Cambridgeshire PE7 1TY.  
01733 203800

#### 85 Wissington AC

Mr R Preston, c/o B.S.C. Plc,  
Wissington, Stoke Ferry, Kings  
Lynn, Norfolk.  
01366 66364

#### 86 Yaxley, Holme and District AA

Mr K Burt, 55 Windsor Road,  
Yaxley, Peterborough,  
Cambridgeshire  
01733 241119

# A Day in the Life of a Bailliff

**L**OVE them or hate them, bailiffs are the only ones preventing thousands more licence cheats on the bank.

Last year, thousands of rod licence dodgers had their collars felt by blokes like John Nichols, an ex-copper turned senior bailiff.

Fisheries work - things like inspecting rod licences and checking fish movements to prevent disease and illegal foreign imports - takes up about 20 per cent of his time.

The rest is divided between 100 other jobs revolving around water abstraction, recreation, navigation, conservation and pollution.

There is no such thing as a lodger-dodger profile but John's personal opinion is that most are fair-weather fishermen who hit the banks a couple of times a year when the sun shines.

A lifelong angler himself, John sees the bailiff's role from both sides of the fence.

"We're here to keep the waterways safe and pull in the licence dodgers. I'm an angler. I buy a licence. Why should they get away without paying?"

We trawled the rivers and lakes around Peterborough, Cambs, looking for dodgers.

A few dozen anglers are checked. Only one fails to show his permit and he's issued a ticket to produce it within seven days or face prosecution.

The man has brought a disabled friend fishing. He says it's the first time this season that he's wet a line and he sent his 13-year-old daughter out that morning to buy a rod licence while he went fishing. Somehow we doubt he'll be

**Every angler in the country is bound by law to buy a rod licence. But what do you get in return? We caught up for a day on the bank with bailiff John Nichols and discovered where the money goes.**

able to produce it.

John has mixed feelings. He feels sorry for the guy but has to enforce the law.

"You can't pick and choose who you give a ticket to," he says. "You have to be scrupulously fair and have one law for everybody."

## **THE BAILIFF'S POWERS**

Under the Salmon and Freshwater Fisheries Act 1975, a bailiff may:

- ◆ Examine any instrument, bait or container that he suspects is being used in taking fish illegally.
- ◆ Stop and search any boat or car that he suspects of containing any illegal fish, bait or instrument.
- ◆ Seize any fish, rod, net, boat or car or other instrument liable to be forfeited under the Act (this includes all your tackle).
- ◆ Enter and cross and land adjoining or near to waters in

order to prevent an offence against the Act.

- ◆ Obtain a warrant to enter and remain upon any land or to search suspected premises.
- ◆ Arrest anyone fishing illegally at night.
- ◆ Require a person to produce his rod licence and give his name and address.
- ◆ Require a pleasure angler to empty his keepnet if he suspects it contains too many fish, therefore causing undue suffering.

## **THE ANGLER'S RIGHTS**

- ◆ All bailiffs, be it full-time, part time or honorary carry an official identification card which includes their photograph. If they can't produce their ID card or a current rod licence you don't have to give them the time of day.
- ◆ If you are approached by someone claiming to be a bailiff but can't produce a licence then

contact your Environment Agency regional offices as soon as possible. Alternatively, use the 24-hour emergency hotline on 0800 807060 for this or to report poaching, pollution or flooding.

- ◆ An angler has seven days to produce their licence (the original, not a photocopy) if it isn't handy when approached by a bailiff.
- ◆ You may use up to four rods where fishery rules allow. Don't forget two licences are required.
- ◆ If you hold a current rod licence, including one and eight day licences, you are entitled to demand to inspect any other angler's licence.

## **WHAT YOUR LICENCE FEE HELPS PAY FOR**

- ◆ **ENFORCEMENT:** Thousands of licence dodgers are prosecuted each year. Anti-poaching work is also undertaken.
- ◆ **FISHERY MONITORING:** Free fishery surveys are undertaken for water owners, clubs and associations.
- ◆ **FISH REARING:** Millions of fish are reared and stocked each year to improve lakes and rivers and replace those killed by pollution.
- ◆ **HABITAT AND FISHERIES IMPROVEMENT:** Includes projects such as fish passes for spawning salmon.
- ◆ **FISH RESCUES:** Fisheries staff save around 1.1 million fish each year, according to recent figures.
- ◆ **RESEARCH AND DEVELOPMENT:** Studies into the killer carp disease SVC and cormorant predation are among hundreds of scientific surveys in progress.

**"You can't pick and choose who you give a ticket to. You have to be scrupulously fair and have one law for everybody."**

*Bailiff John Nichols has a friendly approach to his work.*



# THE ANGLER'S CODE

## ENVIRONMENT

- ◆ NEVER drop litter or discard tackle and remember nylon line and hooks are particularly hazardous to wildlife – always take your litter home with you.
- ◆ NEVER leave rods on the bank with hooks still baited. These food items could be picked up by birds or animals.
- ◆ BEWARE of birds swimming into your line or picking up floating baits as they can easily become tangled up. To avoid problems try not to fish in areas where people feed birds.
- ◆ DON'T leave food or bait when you leave. This encourages vermin and increases the health risk to yourself and other water users.



*Never drop litter when fishing. Look after the environment.*

## SAFETY

- ◆ BEWARE of overhead power cables. Don't use carbon fibre rods or poles near overhead electric power lines – 30 metres is a safe distance away but if in any doubt choose another swim. Electrocutation can be fatal.
- ◆ WATER can be very dangerous – do not take any unnecessary risks when wading and be aware of undercut banks and rising water levels on flooded rivers.
- ◆ NEVER walk out onto frozen waters.
- ◆ Wear buoyancy aids wherever appropriate and be familiar with the location of lifejackets.



*Never fish near overhead powerlines.*

- ◆ LOOK behind yourself before casting and give consideration to footpath users on canal or river banks. Do not spread your tackle out so it blocks their access.

## CONSERVATION

- ◆ ALWAYS carry with you knotless landing nets big enough for the fish you are after, a disgorger and forceps, plus an unhooking mat for large fish.
- ◆ KEEP the time the fish is out of the water to a minimum and NEVER throw or drop fish back into the water.
- ◆ WET your hands before handling fish as this will not remove the protective slime from their body.



*Always use a large keepnet that gives the fish plenty of room.*



*Handle fish with care.*

**ENVIRONMENT AGENCY EMERGENCY HOTLINE**

C H E C K L I S T

# 10 things to do before you go



All fish should be returned to the water safely.

◆ ALL fish should be returned to the water after fishing. Certain species like barbel may need to recover before swimming off. This is best achieved by supporting the fish in the water until it is ready to swim away on its own accord.

◆ FOLLOW the National Federation of Anglers' keepnet code; Always use the largest keepnet possible and submerge the maximum amount of net. When safe to do so, always peg out the keepnet to prevent collapse and once positioned avoid all unnecessary disturbance. Always place the net as close to the fishing position as possible so fish can be placed in as gently and quickly as possible. Only keep fish in the net for a minimum period of time and do not overcrowd the fish – when big catches are expected, take two nets.

## ENVIRONMENT AGENCY HOTLINE

YOU'RE the first on the scene after a mystery pollution has wreaked havoc at your local fishery. Most of the fish are dying and you don't know what to do to save them – it could be a disaster.

But not anymore. Dial **0800 80 70 60** and you will be straight through to the Environment Agency's emergency hotline.

The **FREE** service gives anglers a contact to report any incident of pollution, poaching, flooding or any other matter concerning our rivers, lakes, and coastal waters.

Give them a call and you could save the future of your fishery.

**1** Before you do anything make sure you have an Environment Agency rod licence – it's illegal to go fishing without one. You can get your licence from Post Offices.

**2** Check out *Angling Times* every Wednesday for the most up-to-date information of the fisheries which are in-form. The 'Live and Fishing' section gives you the run down on hundreds of rivers and stillwaters all across the country.



Always take a bait change-bait with you.



*Angling Times*, the fishery owner and your local tackle shop will be able to help you out with information on the baits and methods to catch you bigger fish and lots more of them.

**6** Make sure you've got the right tackle for the venue and the fish you're after. Getting the right balance is critical – there's no point fishing for small rudd and roach on the canal with 10 lb line and size two hooks. Scaling down your tackle will get you more bites and almost certainly catch you more fish.

**7** Keep your bait fresh by storing maggots in the biggest container possible in either a fridge or on a cold stone floor. Sweetcorn, hemp and meat can all be frozen ready for the next time if you don't use it all in one session, just remember to thaw it out before you go.

**8** Tie some hooklengths ready. This will save you a lot of time on the bank and will be especially useful if your hands get too cold to tie knots during the session.

**9** When pole-fishing have two of each rig made up so you can keep on catching throughout the session and don't have to stop even if you get tangled.

**10** Make sure you take a change of bait with you. Don't rule out different colours or flavours of maggots. You can easily flavour your own by keeping a few maggots in a separate box and sprinkling them with curry powder or other spices found in the kitchen.

**3** Find out if the venue can be fished on a day ticket or whether you will require a club or association book. A telephone call to the fishery owner can be invaluable before you go – they'll also tell you if any pegs are booked for matches.

**4** Make sure you know the fishery rules. Check whether there are any bait bans or limits on the amount of bait you can use, or if dogs or radios are allowed or you can use more than one rod. Most fisheries now ask you to use barbless hooks and the use of keepnets is banned at some waters.

**5** Do your homework. Before you go find out which species are present in the water and how best to fish for them.

**0800 80 70 60**

# Subscribe and save over 15%

Take your game up a gear  
& save money with **Angling PLUS** magazine

Enjoy a massive saving on the usual price of Angling Plus with this fantastic offer. Inside each issue you'll find expert instruction and advice from some of the world's leading Match Anglers plus a complete wealth of match-fishing essentials for every Match Angler who wants to catch more and catch faster...



Winning Tactics

Save 15%.  
Offer price £12.00  
(normal price £14.40)



Good Gear Guide



Big Match Specials



Special Features... and much, much more!

### DON'T MISS all this!

- 7th issue completely free\*
  - Free delivery direct to your home
  - Receive your copy before it appears in the shops
  - Enjoy our offers and competitions before anyone else
- \*only when you select the direct debit option

Here's how to make your saving! Simply complete the coupon below and send it to:

EMAP Consumer Magazines, Tower Publishing Services, Tower House, Sovereign Park, Market Harborough, Leics LE16 9EF.

Yes, I would like to subscribe to **Angling Plus** magazine to receive the next 6 issues at the special price of £12.00. I understand that if I choose the direct debit option I will be entitled to 1 extra issue absolutely free. **This offer closes 28th November 1997 and is limited to the UK only. Your subscription will start with the next available issue.**

Name: \_\_\_\_\_

Address: \_\_\_\_\_

Postcode: \_\_\_\_\_

Daytime Tel: \_\_\_\_\_

### 2. PAYMENT BY CREDIT CARD X27

Please debit £12.00 from my ACCESS/VISA/AMEX/DINERS Card: (Please delete)

Card No.

Expiry date: \_\_\_\_\_ Signature: \_\_\_\_\_ Today's Date: \_\_\_\_\_

### 3. PAYMENT BY CHEQUE

I enclose a cheque for £12.00 made payable to: **Angling Plus** magazine.

### 4. OR PHONE 01858 46888 10.00am to 4.00pm at weekends. Please qu

### 1. PAYMENT BY DIRECT DEBIT X27

Instruction to your Bank or Building Society to pay Direct Debits



Originators Identification Number

7 2 4 0 9 6

1. Name and full postal address of your Bank or Building Society Branch

To: The Manager Bank or Building Society:

Address: \_\_\_\_\_ Postcode: \_\_\_\_\_

2. Name(s) of Account holder(s)

\_\_\_\_\_

5. Instruction to your Bank or Building Society  
Please pay EMAP Direct Debits for the account detailed on this instruction subject to the safeguards assured by The Direct Debit Guarantee.

3. Branch sort code:  
(from the right hand corner of your cheque)

-   -

Signature(s)

\_\_\_\_\_

Date

4. Bank or Building Society account number:

Banks and Building Societies may not accept Direct Debit Instructions for some types of accounts.



000191

en 8.30am to 9.00pm during weekdays, and

We may share information about you with our parent cor  
if you do not wis

third parties where we feel their services may be of interest to you.  
I am over 18

Source code: PX34